

240 Hour High Density Video Cassette Recorder

The ADEMCO Video AVR240A High Density VCR features virtual realtime recording for impressive, smooth playback of images. Details are crisp and clear with high band recording of 300 lines horizontal resolution color and 350 lines black and white.

The AVR240A is easy to use with features like a convenient jog-shuttle dial, that allows fingertip control of the winding speed, as well as frame-by-frame searching through images. The AVR240A also features a full-sized, brightly-lit LCD display, and status LEDs that indicate recording, alarm recording and timer schedule modes.

The AVR240A features a maximum record time of 240 hours. A highly flexible VCR, the AVR240A offers eight recording and playback modes to accommodate the vast majority of security applications—from 168 hour mode for weekly recording, to 72 hour mode for weekend recording. For users that change tapes daily, in 18 hour mode 24 hours of continuous recording can be obtained by using a T-160 tape. In alarm conditions the AVR240A records in real-time, 6 hour mode (60 fields/sec).

Alarm alerts may be programmed to be displayed on both the VCR's monitor output and the VCR's front panel display, in addition to having an audio output. User-friendly on screen menus allow for simplified setup of features and parameters such as advanced time and date search, time recording and alarm recording. Additional features include field-by-field tape analysis, multiple playback speeds and alarm index indication.

With its superior design, advanced range of features, and sleek look, the AVR240A is more than a video recorder; it becomes an integral part of your total security system.

FEATURES:

- Up to 240-hour time-lapse recording
- Convenient jog-shuttle Dial
- 24-hour high density realtime recording
- Easy to read LCD display
- Status LEDs for recording, alarm recording and timer schedule modes
- On screen programming
- Automatic head cleaning
- Time and date search
- Alarm index search
- 7 programmable timer settings
- Programmable alarm speed recording (3)
- High speed search
- Video loss detection alarm
- Electronic security lockout feature
- Battery back up
- Automatic video check
- Tape rewind speed app. 150 seconds (T-120)
- Auto recycle
- Linear time counter



AVR240A

**ADEMCO
VIDEO**

AVR240A

ADDITIONAL FEATURES

High Quality Images

The AVR240A's advanced circuitry design along with its crystal ferrite and glass bonded video heads provide superior picture quality, combining high contrast, high resolution and fine detail. These features are essential for applications that require precise image inspection.

Jog-shuttle Dial

The AVR240A features a convenient jog-shuttle dial. The jog-shuttle dial that allows fingertip control of the winding speed. The jog function allows frame-by-frame searching while the shuttle offers rapid winding speed.

Eight Recording/Playback Modes

With the flexibility of eight recording and playback modes the user can select what suits their application. One T-120 tape can record up to 10 days or a maximum of 240 hours. In 6,18A and 30A hour modes (A=Audio), the VCR will record and playback both audio and video.

Forward/Reverse Playback Modes & Noiseless Field Advance/Field Reverse

Forward Playback can be performed in all eight modes and Reverse Playback in four modes to assure clear, precise images when checking an object on the tape. Noiseless Field Advance and Field Reverse playback can be obtained at search speeds 3x, 5x, 7x or 9 times the 6 hour mode (60 fields/sec.).

Recording Review /Auto Review Function

Simply press the play button during recording to check for proper recording. Auto RE-Check rewinds at the end of the tape during recording and plays back a few seconds checking for normal recording.

Video Loss Detection Alarm

If the VCR does not detect a video signal during recording, the monitor displays "No Video".

Convenient On-Screen Display (OSD)

The monitor will display on the VCR's monitor output and VCR display, all information that has been programmed such as, recording date and time, video mode selection, alarm activation and memory. Search speeds can easily be selected through the on-screen display. (See screen displays on right)

Mode Selectable Timer

Up to seven different programs can be preset allowing 2 programs per day to be scheduled.

Auto Head Cleaning

The VCR cleans the video heads automatically when a cassette is inserted and ejected or when the tape is rewound in the recycle recording mode, to prevent accumulation of dirt on the heads.

ORDERING:

Part No.	Description
AVR240A	240 Hour High Density Video Cassette Recorder

TECHNICAL SPECIFICATIONS

Operational

Tape format	VHS (T-120 or T-160)
Standard	NTSC/ EIA
Recording	Rotary two head helical azimuth recording
Heads	Double-azimuth 4 heads
Recording Length	6, 18, 30, 48, 72, 120, 168, 240 hours
Search Speed	6-hour mode x3, x5, x7, x9
Day Light Savings	Yes
Video	
Input	BNC, 1Vp-p 75 ohm unbalanced
Output	BNC, 1Vp-p 75 ohm unbalanced
S/N	>42db (6 hr mode)
High Resolution	
Color	300 lines (06 mode)
Monochrome	350 lines (06 mode)
Audio:	
Input:	-8dBm 50k unbalanced
Output	-9dBm 600 ohm unbalanced
Frequency Range	100Hz-8kHz (6 hr mode)
S/N	40dB (6 hr. mode)

Environmental:

Operating Temperature	41°F-104°F (5°C-40°C)
Storage Temperature	-4° F-131°F (-20°C-55°C)
Humidity	10%-75%

Power:

Requirements	120 VAC, 60 Hz ± 10%
Consumption	31 W
Battery Back-up	720 hours

Mechanical:

Dimensions:	3.8"(H) x 17.1" (W) x 11.25" (D) (99mm x 435mm x 286mm)
Weight	8.8 lbs. (4.0kg)
Shipping Weight	11.02 lbs. (5.0 kg)

Regulatory:

- Emissions:
 - FCC: Part 15, Subpart B, Class A,
 - CE: EN55022, EN61000-3-2, EN61000-3-3
 - CSA: CSA-C22.2 No. 1-1998
- Immunity: CE: EN55024:1998
- Health/Safety: UL: UL2044

Recording Modes

REC/PLAY Mode	Actual REPLAY Hrs.		Number of REC Fields	Tape Drive	Audio Recording
	T-120	T-160			
6	6	8	60 fields/sec	Continuous	Yes
18	18	24	20 fields/sec	Continuous	Yes (A18)
30	30	40	12 fields/sec	Continuous	Yes (A30)
48	48	No Rec	6.67 fields/sec	Intermittent	No
72	72	No Rec	4.61 fields/sec	Intermittent	No
120	120	No Rec	2.86 fields/sec	Intermittent	No
168	168	No Rec	2.07 fields/sec	Intermittent	No
240	240	No Rec	1.33 fields/sec	Intermittent	No

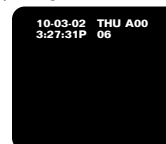
For Optimal Picture Quality When Using

T-160 Tape:

- Recommended Brands: Fuji, Hitachi, Maxwell, TDK
- Recommended Type: Commercial Grade

Convenient On-Screen Display

Date/Time



Clock Set



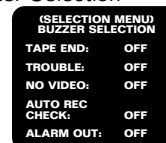
Timer Presets



Selection Menu



Buzzer Selection



Alarm Set



Alarm Memory



ADEMCO VIDEO

Customer Service . . . 1-800-352-9169
Applications 1-877-653-0302
Technical Support . . . 1-888-238-7978
Fax 1-516-921-4307
Web site . . . www.ademcovideo.com

171 Eileen Way, Syosset, NY 11791

Copyright ©2002 Pittway Corporation

