

## DS-2CE55F5P(N)-VFIR3

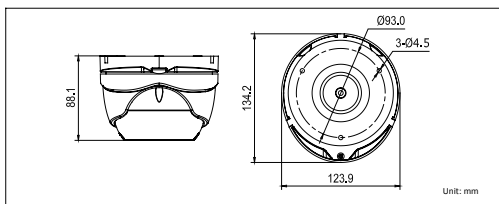
### 1.37 Mega PICADIS IR Dome Camera



#### Key features

- 1/3" PICADIS sensor II
- Effective pixel: 1305(H) x 1049(V)
- 720 TVL horizontal resolution
- 2.8 - 12mm vari-focal lens
- True Day/Night
- Up to 40m IR distance
- Up The Coax(via coaxial cable)
- OSD menu, 3D DNR & Smart IR
- IP66 weatherproof

#### Dimensions



#### Accessories



Indoor/Outdoor wall mount  
DS-1273ZJ-130-TRL

DS-2CE55F5P(N)-VFIR3	
<b>Camera</b>	
Image Sensor	1/3" 1.37 Mega PICADIS II
Signal System	PAL/NTSC
Effective Pixels	1305 (H) × 1049 (V)
Min. Illumination	0.1 Lux @ (F1.2,AGC ON),0 Lux with IR 0.14 Lux @ (F1.4,AGC ON),0 Lux with IR
Shutter speed	PAL: 1/25 s to 1/25,000 s NTSC: 1/30 s to 1/30,000 s
Lens	2.8-12mm @ F1.4 Angle of view: 80° - 27.2°
Lens Mount	φ14
Angle Adjustment	Pan: 0 - 360°, Tilt: 0 - 75°, Rotation: 0 - 360°
Day & Night	ICR
Horizontal Resolution	720TVL
Synchronization	Internal synchronization
Video Output	1Vp-p composite output (75 Ω/BNC)
S/N Ratio	More than 62 dB
<b>Menu</b>	
Lens Type	Auto Iris/ELC/ELC&ALC
Automatic Exposure	Globe AE/DWDR
AGC	Low/Middle/High/Off
Slow Shutter	Support
White Balance	Auto/Manual
D/N Mode	Color/BW/SMART IR
3D DNR	Low/Middle/High/Off
Motion Detection	Support, maximum 4 zones
Privacy Mask	On/Off, maximum 8 zones
UTC Function	Support
Language	English/Chinese
Function	Digital Wide Dynamic Range, 3D Digital Noise Reduction, Sharpness, Brightness, Saturation, Resolution, Digital Zoom, Mirror, Reset, etc.
<b>General</b>	
Working Temperature/ Humidity	-20 °C - 60 °C (-4 °F - 140 °F) Humidity 90% or less (non-condensing)
Power Supply	12 VDC
Power Consumption	Max. 5 W
Ingress Protection	IP66
IR Range	40 m
Dimensions	134.2×123.9×88.1 mm(5.28"×4.88"×3.47")
Weight	800g (1.76l lb)

#### Order models

DS-2CE55F5P-VFIR3  
DS-2CE55F5N-VFIR3