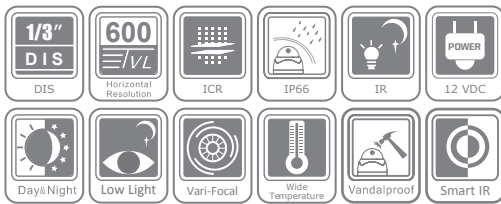


DS-2CE582P(N)-VPIR2

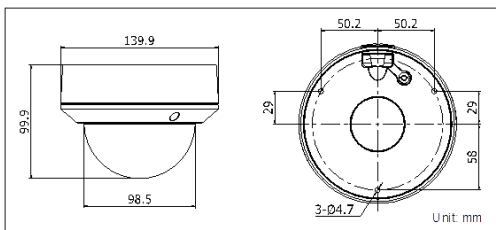
600 TVL Outdoor Vandal Proof IR Dome Camera



Key features

- 1/3" DIS
- True Day/Night
- 600 TVL Horizontal Resolution
- 2.8 - 12 mm /F1.4 Vari-focal Lens
- 30m IR Distance
- IP66 Weatherproof and Vandal Proof
- Wide Operating Temperature Range

Dimensions



Accessories



DS-2CE582P(N)-VPIR2	
Camera	
Image Sensor	1/3" DIS
Signal System	PAL/NTSC
Effective Pixels	720(H)×480(V)
Min. Illumination	0.1Lux @ (F1.2,AGC ON),0 Lux with IR 0.14Lux @ (F1.4,AGC ON),0 Lux with IR
Shutter speed	PAL: 1/25 s to 1/15,000 s NTSC: 1/30 s to 1/15,000 s
Lens	2.8-12mm @ F1.4
	Angle of view: 80° - 27.2°
Lens Mount	Φ 14
Angle Adjustment	Pan: 0 - 355°, Tilt: 0 - 75°, Rotation: 0 - 355°
Day & Night	IR cut filter with auto switch
Horizontal Resolution	600 TVL
Synchronization	Internal synchronization
Video Output	1Vp-p composite output (75 Ω/BNC)
S/N Ratio	More than 52 dB
General	
Working Temperature/Humidity	-40 °C - 60 °C (-40 °F - 140 °F) Humidity 90% or less (non-condensing)
Power Supply	12 VDC
Power Consumption	Max. 4 W(Max. 6.5 W with IR cut filter on)
Ingress Protection	IP66
IR Range	Approx. 20 to 30 meters
Dimensions	Φ 139.9 × 99.9 mm (Φ 5.51" × 3.93")
Weight	800g (1.76l lbs)

Available models

PAL: DS-2CE582P-VPIR2
NTSC: DS-2CE582N-VPIR2