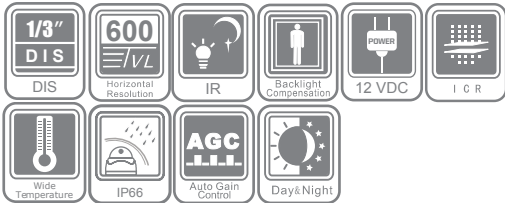


DS-2CE5582P(N)-IRM

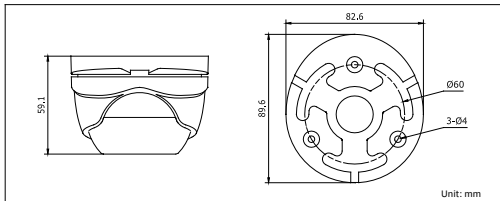
600 TVL DIS Outdoor IR Dome Camera



Key features

- 600 TVL Horizontal Resolution
- True Day/Night
- 2.8/3.6/6mm Fixed Lens, 0.1 lux /F1.2
- 20m IR Distance
- Wide Operating Temperature Range:
-40°C to 60°C(-40°F to +140°F)

Dimensions



DS-2CE5582P(N)-IRM	
Camera	
Image sensor	1 / 3" DIS
Signal system	PAL / NTSC
Effective pixels	720 (H) × 480 (V)
Min. illumination	0.1 Lux @ (F1.2,AGC ON),0 Lux with IR
Shutter Speed	PAL: 1 / 25 s to 1 / 15,000 s NTSC: 1 / 30 s to 1 / 15,000 s
Lens	3.6 mm (2.8mm,6 mm optional) Angle of view: 68.4° (3.6 mm)
Lens mount	M12
Angle adjustment	Pan: 0 - 360°, Tilt: 0 - 75°, Rotation: 0 - 360°
Day & night	IR cut filter with auto switch
Horizontal resolution	600 TVL
Synchronization	Internal synchronization
Video output	1Vp-p composite output (75 Ω / BNC)
S / N ratio	More than 52 dB
General	
Working Temperature / Humidity	-40°C ~ 60°C (-40°F ~ 140°F) Humidity 90% or less (non-condensing)
Power supply	12 V DC
Power consumption	Max. 2 W (Max. 5 W with IR cut filter on)
Weather-proof rating	IP66
IR range	20 meters
Dimensions	89.6 × 59.1 mm (3.53" × 2.33")
Weight	400 g (0.88 lbs)

Available models

PAL: DS-2CE5582P-IRM
NTSC: DS-2CE5582N-IRM