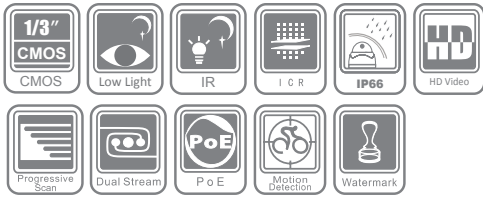


# DS-2CD855-EI3/EI5

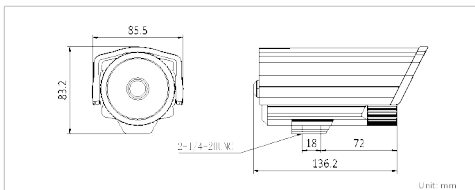
## 2 MP IR Bullet Camera



### Key features

- 2 megapixel high resolution
- Full HD1080p video output
- Super low-light
- IP66 rating
- IR range: (EI3) max. 30m, (EI5) max 50m
- True day / night

### Dimensions



DS-2CD855-EI3 / DS-2CD855-EI5	
<b>Camera</b>	
Image sensor	1/2.8" progressive scan CMOS
Min. illumination	0.05 lux @F1.2, AGC ON 0.14 lux @F2.0, AGC ON 0 lux with IR
Shutter time	1/25s ~ 1/100,000s
Lens	-EI3: 6 mm @F2.0, angle of view: 45.3° (4mm optional) -EI5: 12mm @F2.0, angle of view: 22°
Lens mount	M12
Day & night	IR cut filter with auto switch
Digital noise reduction	Yes
<b>Compression Standard</b>	
Video compression	H.264 / MPEG4 / MJPEG
H.264 profile	Baseline profile / main profile / high profile
Bit rate	32 Kbps ~ 16 Mbps
<b>Image</b>	
Max. Image Resolution	1920 x 1080
Frame rate	50Hz: 25fps (1920 × 1080) 60Hz: 30fps (1920 × 1080)
Image settings	Saturation, brightness, contrast adjustable through client software or web browser
High-light compensation	Yes
<b>Network</b>	
Network storage	NAS (iSCSI optional)
Alarm trigger	Motion detection, tampering alarm, storage error, storage exception
Protocols	TCP/IP, HTTP, DHCP, DNS, DDNS, RTP, RTSP, PPPoE, SMTP, NTP, SNMP, HTTPS, FTP, 802.1x, Qos (SIP, SRTP, IPv6 optional)
Interoperability	ONVIF, PSIA, CGI
Security	User authentication, watermark
<b>Interface</b>	
Communication interface	1 RJ45 10 M / 100 M Ethernet interface
<b>General</b>	
Operating conditions	-25 °C ~ 60 °C (-13°F ~ 140 °F) humidity 95% or less (non-condensing)
Power supply	12 VDC ± 10% , PoE (802.3af)
Power consumption	Max. 6.5W
Weather proof rating	IP66
IR range	-EI3: up to 30m -EI5: up to 50m
Dimensions	85.5 × 83 × 165 mm
Weight	1000g

### Available models

DS-2CD855-EI3, DS-2CD855--EI5

\* Product picture and technical specs subject to change without previous notice.  
For product availability, please contact our local sales representatives.

### Accessories



DS-1212ZJ  
(Indoor wall mount)



DS-1213ZJ  
(Indoor/Outdoor Wall Mount)