

DS-2CD754FWD-E(I)(Z)

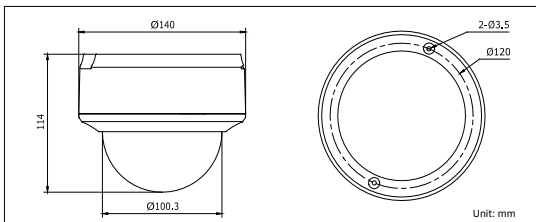
3.0MP WDR Indoor Dome Camera



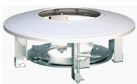
Key features

- 3.0 mega-pixel (2048 x 1536) high resolution
- 120dB wide dynamic range
- Full HD1080p real-time video
- 3D digital noise reduction
- Super low light
- Motorized VF lens (-Z)
- IR LEDs optional (-I: up to 20m)
- Vandal-proof housing

Dimensions



Accessories



DS-1227ZJ
(Indoor in-ceiling mount)



DS-1229ZJ
(Vandal-proof wall mount)

Specifications

DS-2CD754FWD-E(I)(Z)	
Camera	
Image sensor	1/3" progressive scan CMOS
Min. illumination	0.1 lux @F1.2, AGC ON 0.17 lux @F1.6, AGC ON 0 lux with IR
Shutter time	1/25s ~ 1/100,000s
Lens	2.7 ~ 9mm @F1.6, angle of view: 105° ~ 32.1° -Z: motorized VF lens
Lens mount	Φ14
Auto iris	DC drive
Angle adjustment	Pan: 0° ~ 360°, Tilt: 0° ~ 75°, Rotation: 0° ~ 360°
Day & night	Electronic (-I: IR cut filter with auto switch)
Wide dynamic range	120 dB
Compression standard	
Video compression	H.264 / MPEG4 / MJPEG
Bit rate	32 Kbps ~ 16 Mbps
Audio compression	G.711 / G.726
Dual stream	Yes
Image	
Max. image resolution	2048 x 1536
Frame rate	50Hz: 12.5fps (2048 x 1536), 25fps (1920 x 1080), 25fps (1600 x 1200) 60Hz: 15fps (2048 x 1536), 30fps (1920 x 1080), 30fps (1600 x 1200)
Image settings	Saturation, Brightness, Contrast adjustable through client software or web browser
Network	
Network storage	NAS (iSCSI optional)
Alarm trigger	Motion detection, tampering alarm, network disconnect, IP address conflict, storage exception
Protocols	TCP/IP, HTTP, DHCP, DNS, DDNS, RTP, RTSP, PPPoE, SMTP, NTP, SNMP, HTTPS, FTP, 802.1x, Qos (SIP, SRTP, IPv6 optional)
Security	User authentication, watermark
System compatibility	ONVIF, PSIA, CGI
Interface	
Audio input	1-ch 3.5 mm audio interface, MIC IN/LINE IN
Audio output	1-ch 3.5 mm audio interface (line level, 600 Ω)
Communication interface	1 RJ45 10M / 100M ethernet interface, 1 RS-485 interface
Alarm input	2
Alarm output	2
Video output	1 Vp-p composite output (75Ω / RCA)
On-board storage	Built-in SD/SDHC slot, up to 32 GB
Reset button	Yes
General	
Operating conditions	-10°C ~ 60°C (14°F ~ 140°F) Humidity 90% or less (non-condensing)
Power supply	12 VDC ± 10%, PoE (802.3af)
Power consumption	5.5 W ~ 10.5 W (IR LEDs: +2W, motorized VF lens: +3W)
Impact Protection	IEC60068-275Eh, 50J; EN50102, up to IK10
IR Range	-I: approx 10 ~ 20 meters
Dimensions	Φ140 × 114 mm (Φ5.51" × 4.49")
Weight	1400 g (3.09 lbs)

Available models

DS-2CD754FWD-E, DS-2CD754FWD-EI, DS-2CD754FWD-EZ, DS-2CD754FWD-EIZ

* -I: IR LEDs, up to 20m

* -Z: motorized VF lens