

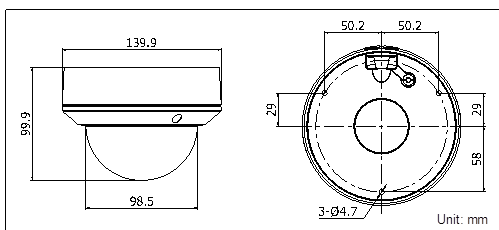
DS-2CD2712F-I(S) (1.3MP)/DS-2CD2732F-I(S) (3MP) VF IR Dome Network Camera



Key features

- 1.3MP / 3MP high resolution
- HD real-time video
- IR LEDs: up to 30m
- DWDR & 3D DNR & BLC
- Onboard storage (up to 64GB)
- (-S) Audio I/O, Alarm I/O
- IP66
- Vandal-proof

Dimensions



Accessories



DS-1227ZJ
In-ceiling mount



DS-1273ZJ-135
Wall mount



DS-1280ZJ-DM21
Junction box

Available models

DS-2CD2712F-I, DS-2CD2712F-IS
DS-2CD2732F-I, DS-2CD2732F-IS

* -S: Audio I/O (MIC IN) interface and Alarm I/O interface.

	DS-2CD2712F-I (S)	DS-2CD2732F-I (S)
Camera		
Image sensor	1/3" progressive scan CMOS	
Min. illumination	0.01 lux @F1.2, AGC ON, 0 lux with IR	0.07 lux @F1.2, AGC ON, 0 lux with IR
Shutter time	1/3s ~ 1/100,000s	
Lens	2.8 - 12 mm @F1.4, angle of view: 98.4° ~ 30.2°	2.8 - 12 mm @ F1.4, Angle of view: 91.2°-28.3°
Lens mount	Φ14	
Auto iris	DC drive	
Day & night	ICR	
Digital noise reduction	3D DNR	
Wide dynamic range	Digital WDR	
Backlight compensation	Yes, zone configurable	
Angle adjustment	Pan:0° - 355°, Tilt: 0° - 75°, Rotation: 0° - 355°	
Compression Standard		
Video compression	H.264 / MJPEG	
H.264 codec profile	Main profile	
Bit rate	32 Kbps ~ 12 Mbps	
Audio compression(-s)	G.711 / G.722.1/ G.726 / MP2L2	
Audio bit rate(-s)	64 Kbps (G.711) / 16Kbps(G.722.1) / 16 Kbps (G.726) / 32-128 Kbps(MP2L2)	
Image		
Max. Image Resolution	1280 × 960	2048 × 1536
Frame rate	50 Hz: 25 fps (1280 × 960), 25 fps (1280 × 720), 25 fps (704 × 576), 25 fps (640 × 480) 60 Hz: 30 fps (1280 × 960), 30 fps (1280 × 720), 30 fps (704 × 576), 30 fps (640 × 480)	50Hz: 20fps (2048 × 1536), 25fps (1920 × 1080), 25fps (1280 × 720) 60Hz: 20fps (2048 × 1536), 30fps (1920 × 1080), 30fps (1280 × 720)
Image settings	Rotate mode, Saturation, brightness, contrast, sharpness adjustable through client software or web browser	
ROI	Support	
Network		
Network storage	NAS (Support NFS, SMB/CIFS)	
Alarm trigger	Line Crossing, Intrusion Detection, Motion detection, Tampering alarm, Storage exception	
Protocols	TCP/IP, ICMP, HTTP, HTTPS, FTP, DHCP, DNS, DDNS, RTP, RTSP, RTCP, PPPoE, NTP, UPnP, SMTP, SNMP, IGMP, 802.1X, QoS, IPv6, Bonjour	
System compatibility	ONVIF, PSIA, CGI, ISAPI	
General functionalities	Flickerless, heartbeat, mirror, privacy mask, watermark, IP address filtering, Anonymous access	
Interface		
Communication interface	1 RJ45 10 M / 100 M Ethernet interface	
Onboard storage	Built-in Micro SD / SDHC / SDXC slot, up to 128 GB	
General		
Operating conditions	-30 °C ~ 60 °C (-22°F ~ 140 °F) humidity 95% or less (non-condensing)	
Power supply	12 VDC ± 10% , PoE (802.3af)	
Power consumption	Max. 5.5W	
Impact protection	IEC60068-2-75Eh, 20J; EN50102, up to IK10	
Ingress protection level	IP66	
IR range	20 to 30 meters	
Dimensions	Φ140 x 99.9 mm (Φ 5.51" x 3.94")	
Weight	1000g	