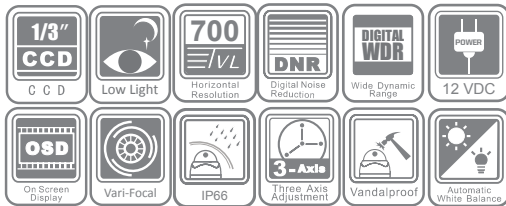


DS-2CC52A1P(N)-VP

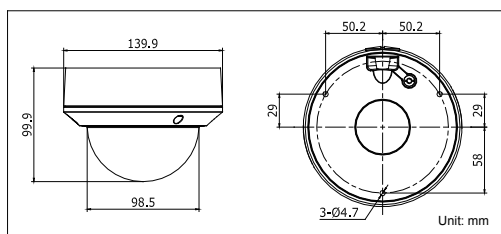
700 TVL Outdoor Vandal Proof Dome Camera



Key features

- 1/3" SONY CCD
- 700 TVL Horizontal Resolution
- Electronic Day/Night
- 2.8–12mm Vari-focal Lens
- OSD Menu, DNR, Digital WDR, Eclipse
- Vandal Proof, IP66 Rating

Dimensions



DS-2CC52A1P(N)-VP	
Camera	
Image Sensor	1/3" SONY CCD
Signal System	PAL/NTSC
Effective Pixels	PAL: 976 (H) × 582 (V) NTSC: 976 (H) × 494 (V)
Min. Illumination	0.001Lux @ (F1.2,AGC ON) 0.0014Lux @ (F1.4,AGC ON)
Shutter Speed	PAL: 1/50 s to 1/100,000 s NTSC: 1/60 s to 1/100,000 s
Lens	2.8 - 12 mm @ F1.4 Angle of view: 80° - 27.2°
Lens Mount	φ14
Auto Iris	DC drive
Angle Adjustment	Pan: 0 - 355°, Tilt: 0 - 75°, Rotation: 0 - 355°
Day & Night	Electronic
Horizontal Resolution	700 TVL
Synchronization	Internal synchronization
Video Output	1Vp-p composite output (75 Ω/BNC) Test monitor out [1Vp-p composite output (75 Ω/BNC), device line]
S/N Ratio	More than 62 dB
Menu	
Camera ID	On/Off (52 letters, position adjustable)
D/N Mode	Auto /Day /Night
White Balance	ATW/PUSH/USER1/USER2/ANTI CR/MANUAL/PUSH LOCK
Privacy Masking	On/Off, maximum 8 zones
Motion Detection	On/Off
Back Light	BLC/HLC/Off
Language	English/Chinese/ Korean/ Italian/ Russian/ Portuguese/ German/ French
Function	ATR, HLC, DNR, Sharpness, Brightness, Contrast, Hue, Gain, Mirror, Defect Pixel Correction
General	
Working Temperature/Humidity	-10 °C - 60 °C (14 °F - 140 °F) Humidity 90% or less (non-condensing)
Power Supply	12 V DC ± 10%
Power Consumption	Max. 2 W
Ingress Protection level	IP66
Impact Protection	IEC60068-2-75 test, Eh, 50J; EN50102, up to IK10.
Dimension	Φ 139.9 × 99.9 mm (Φ 5.51" × 3.93")
Weight	800 g (1.76 lbs)

Available models

PAL: DS-2CC52A1P-VP
NTSC: DS-2CC52A1N-VP

Accessories



DS-1216ZJ
(Wall Mount)



DS-1238ZJ
(Pendant Mount)