

DS-2CC5281P(N)-VP

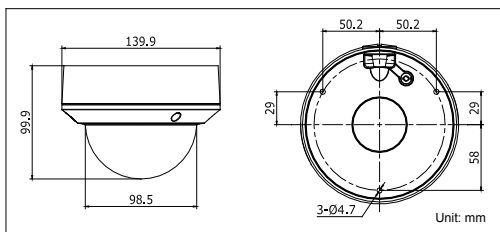
600TVL Outdoor Vandal Proof Dome Camera



Key features

- 1/3" SONY CCD
- 600 TVL Horizontal Resolution
- Electronic Day/Night
- 2.8–12mm Vari-focal Lens
- OSD Menu, DNR, Digital WDR, Eclipse
- Vandal Proof, IP66 Rating

Dimensions



Accessories



DS-1216ZJ
(Wall Mount)

DS-1238ZJ
(Pendant Mount)

DS-2CC5281P(N)-VP	
Camera	
Image sensor	1/3" SONY CCD
Signal system	PAL/NTSC
Effective pixels	PAL: 752 (H) × 582 (V) NTSC: 768 (H) × 494 (V)
Min. illumination	0.001Lux @ (F1.2,AGC ON) 0.0014Lux @ (F1.4,AGC ON)
Shutter time	1 / 50 s to 1 / 100,000 s
Lens	2.8 - 12 mm @ F1.4 Angle of view: 80° - 27.2°
Lens mount	φ14
Auto iris	DC drive
Angle adjustment	Pan: 0 - 355°, Tilt: 0 - 75°, Rotation: 0 - 355°
Day & night	Electronic
Horizontal resolution	600 TVL
Synchronization	Internal synchronization
Video output	1Vp-p composite output (75 Ω / BNC) Test monitor out [1Vp-p composite output (75 Ω / BNC), device line]
S / N ratio	More than 62 dB
Menu	
Camera ID	On / Off (52 letters, position adjustable)
D / N mode	Auto / Day / Night
White balance	ATW / Push / User1 / User2 / Anti CR / Manual / Push lock
Privacy masking	On / Off, maximum 8 zones
Motion detection	On / Off
Back light	BLC / HLC / Off
Language	English / Chinese / Korean / Italian / Russian / Portuguese / German / French
Function	ATR, HLC, DNR, Sharpness, Brightness, Contrast, Hue, Gain, Mirror, Defect Pixel Correction
General	
Temperature / Humidity	-10 °C - 60 °C (14 °F - 140 °F), Humidity 90% or less (non-condensing)
Power supply	12 V DC ± 10%
Power consumption	Max. 2 W
Ingress protection level	IP66
Impact protection	IEC60068-2-75 test, Eh, 50J; EN50102, up to IK10.
Dimension	Φ 139.9 × 99.9 mm (Φ 5.51" × 3.93")
Weight	800 g (1.76 lbs)

Available models

PAL: DS-2CC5281P-VP

NTSC: DS-2CC5281N-VP