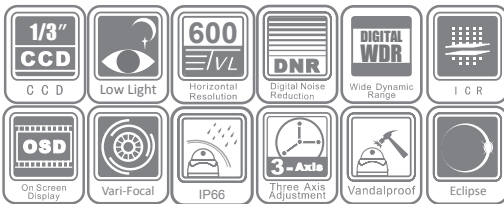


DS-2CC5181P(N)-VPIR(H)

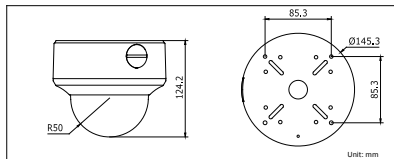
600 TVL Outdoor Vandal Proof Dome Camera



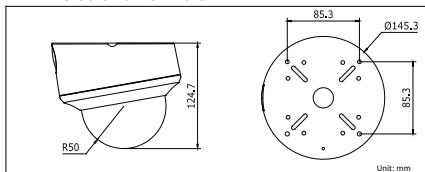
Key features

- 1/3" SONY CCD
- 600 TVL Horizontal Resolution
- Super Low Illumination
- 2.8–12mm Vari-focal Lens
- True Day/Night
- OSD Menu, DNR, Smart IR, Eclipse
- Vandal Proof, IP66 Rating

Dimensions



Dimensions with DS-1240ZJ:



Accessories



DS-1216ZJ
(Wall Mount)

DS-1240ZJ
(Tilted wall-mount)

DS-1238ZJ
(Pendant Mount)

DS-1241ZJ
(In-ceiling Mount)

DS-2CC5181P(N)-VPIR(H)	
Camera	
Image Sensor	1/3" SONY CCD
Signal System	PAL/NTSC
Effective Pixels	PAL: 752 (H) × 582 (V) NTSC: 768 (H) × 494 (V)
Min. Illumination	0.001 Lux @ (F1.2, AGC ON), 0 Lux with IR 0.0014 Lux @ (F1.4, AGC ON), 0 Lux with IR
Shutter speed	PAL: 1/50 s to 1/100,000 s NTSC: 1/60 s to 1/100,000 s
Lens	2.8 - 12 mm @ F1.4 Angle of view: 80° - 27.2°
Lens Mount	φ14
Auto Iris	DC drive
Angle Adjustment	Pan: 0 - 355°, Tilt: 0 - 80°, Rotation: ± 90°
Day & Night	IR cut filter with auto switch
Horizontal Resolution	600 TVL (Color), 650 TVL (B/W)
Synchronization	Internal/Power synchronization
Video Output	1Vp-p composite output (75 Ω/BNC); Test monitor out [1Vp-p composite output (75 Ω/BNC), device line]
S/N Ratio	More than 62 dB
Menu	
Camera ID	On/Off (52 letters, position adjustable)
D/N Mode	Auto /Day/Night/EXT1/EXT2
White Balance	ATW/PUSH/USER1/USER2/ANTI CR/MANUAL/PUSH LOCK
Privacy Masking	On/Off, maximum 8 zones
Motion Detection	On/Off
BLC	Area/Intensity/Off
Language	Chinese/ English/ Japanese/ German/ French/ Russian/ Portuguese/ Spanish
Function	SMART IR, ATR, HLC, DNR, Sharpness, Brightness, Contrast, Hue, Gain, Mirror, Defect Pixel Correction
General	
Working Temperature/Humidity	-10 °C - 60 °C (14 °F - 140 °F) Humidity 90% or less (non-condensing) -H: -40 °C - 60 °C (-40 °F - 140 °F) with heater and fan on
Power Supply	24 V AC ± 10%, 12 V DC ± 10% -H: 24 V AC ± 10%
Ingress Protection	IP66
Heater	-H: support
IR Range	approx 20 to 30 meters
Power Consumption	Max. 13 W -H: Max. 25W
Impact Protection	IEC60068-2-75 test, Eh, 50J; EN50102, up to IK10.
Dimensions	Φ 145.3 × 124.2 mm (Φ 5.72" × 4.89")
Weight	2000 g (4.40 lbs)

Available models

PAL: DS-2CC5181P-VPIR(H)
NTSC: DS-2CC5181N-VPIR(H)