

Anytime, Anywhere...  
Clear Surveillance

## A New Convenient Recording Solution **SNR-32A/16A/9A** Record Clear Image from Anywhere via the Internet!

The SNR-32A/16A/9A is a feature-rich network recording software. It can record up to 32 units of IP products and is compatible with the SNM-64P, Samsung Network Manager. The network recorder offers great convenience and flexibility in recording real-time videos via the internet.

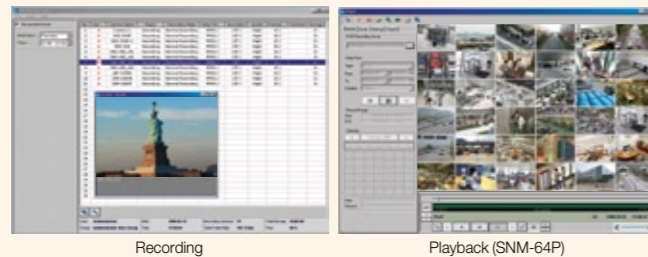
### MPEG-4/JPEG dual codec

The SNR-32A/16A/9A uses MPEG-4 and JPEG compression so that users can select a compression algorithm according to their circumstances. Users can select a resolution (D1, Half D1, CIF), picture quality and frame rate variously according to traffic environment of network, so real-time monitoring is available.



### Max. 480fps real-time recording, Various recording modes

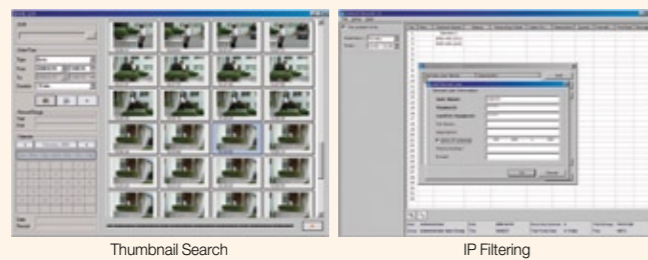
High resolution images of maximum 480fps that network unit sends can be stored. It also supports a selection of recording modes such as D1 (704 x 480), Half D1 (704 x 240), CIF recording, normal, schedule, and event, motion detection etc., ensuring optimized network video recording.



### Convenient search, Additional multi-functions

The SNR-32A/16A/9A supports system security modes, various simple search modes, and excellent compatibility with external storage devices.

- System Auto Recovery, Auto Power-On Record
- Thumbnail Search
- External NAS (Network Attached Storage)
- Pre/Post Recording (60 seconds)
- User IP filtering, Login Packet Encryption



### Specifications

MODE		SNM-64P (Professional)	MODE		SNR-9A	SNR-16A	SNR-32A	
<b>Device to Use</b>	Supported Devices	Network Camera : SNC-550, SNP-3300/1000 Video Server : SNS-400/100 DVR : 1650E/1640A/950E/940/450	<b>Support H/W</b>	Supported Devices	Network Camera : SNC-550, SNP-3300/1000 Video Server : SNS-400/100			
	Max. register Device	No limit		Max. Register Device	No limit			
	Multi-monitor	Max. 3 (Live 2)		Max. Record Channel	9	16	32	
<b>Live Monitoring</b>	Screen-split Modes	1 / 4 / 6 / 8 / 9 / 16 / 25 / 36 / 64 (Full-screen)	<b>Performance</b>	Recording	270 CIF	480 CIF	480 CIF	
	Launches Instant Player	DVR only		Playback	5 Client	5 Client	5 Client	
	Controls PTZ Function	Pan, Tilt, Zoom, Focus, Preset		<b>Recording</b>	Video Codec	MPEG-4, JPEG (Selectable)		
	FTP/E-mail Notification	Supported			Audio Codec	ADPCM		
	Snapshot / Prints Image	Supported			Resolution	D1, HD1, CIF		
<b>Playback</b>	Local (Remote) Playback / Back up	Supported	<b>Component</b>	Quality	5 level			
	Converts Video Format	AVI		Pre/Post Recording Time	60 sec / 60 sec			
	Search	Go to a certain time, Latest data search, Timeline index search, Thumbnail image search		Recording Mode	Continue, Schedule, MD, Event, Compound			
	Zooms in/out on the Image	Supported		Set up	Configurable frame rate for each			
<b>Event Signal Monitoring</b>	FTP/E-mail Notification	Supported	<b>Storage</b>	CH(1~30 (N), 1~25 (P)), Channel independent setup				
	Snapshot / Prints Image	Supported		Max record HDD Drive	23 HDDs			
	Display	Current event log on the list, live image Changes border of live video channel to red		Space Configuration (Each Drive)	Supported			
	Filtering	Unnecessary signal		Space Shortage Warning	Supported			
	Event Image Playback	DVR only		NAS (Network Attached Storage)	Supported (External)			
<b>Alarm Signal Monitoring</b>	Displays	Current alarm log on the list, live/thumbnail image a certain period of time of a day, a certain types of alarms automated notifications to user schedules actions against alarms	<b>User</b>	User Level	2 level			
	Event Image Playback	DVR only		Local (Remote) User	Group : 1, User : No limit			
	Controls Preset on PTZ Camera	Supported		IP Filtering (Remote user)	Supported			
	Plays Warning Sound or Message	Supported		<b>S/W Status</b>	Record, Record schedule, Storage, Live/Recording image (Instant viewer)			
	FTP/E-mail Notification	Supported			<b>Data Security Technology</b>	Login Packet Encryption	Supported	
<b>User</b>	Group / User	Group / user : No limit	<b>System</b>	System auto recovery, Auto power-on record				
	Number of Map	Map group : No limit, Layers : 16, Maps : 64		<b>System Specifications</b>	CPU : Intel Core2Duo E6750, RAM : 2GB above Video memory : 256MB, HDD : 250GB OS : Window XP SP2, Windows 2003 SP2 DirectX 9.0 above, Microsoft .Net Framework 2, Microsoft SQL Server 2005			
<b>MAP</b>	Supports Image	JPEG / BMP						
	<b>System Specifications</b>	CPU : Intel Core2Duo E4300, RAM : 2GB above Video memory : 256MB, HDD : 80GB OS : Window 2000/XP SP2, DirectX 9.0 above Display resolution : 1,024 x 768 above						

\* The entire items are not supported in every device. Some items are not supported in certain devices.

### Accessory (Supplied with SNM-64P, SNR-32A/16A/9A)



The Eco mark represents Samsung Techwin's will to create environment-friendly products, and indicates that the product satisfies the EU RoHS Directive.

Design and specifications are subject to change without notice.



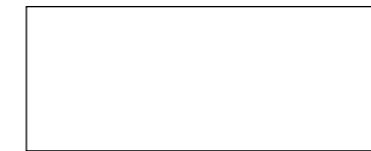
**SAMSUNG TECHWIN CO., LTD.**  
145-3, Sangdaewon 1-dong, Jungwon-gu, Seongnam-si, Gyeonggi-do Korea 462-703  
Tel : +82-31-740-8151 ~ 8 Fax : +82-31-740-8145  
www.samsungcctv.com

**SAMSUNG OPTO-ELECTRONICS AMERICA, LTD.**  
1480 Charles Willard St. Carson, CA 90746  
Tel : +1-310-632-1234 Fax : +1-310-632-2195

**SAMSUNG OPTO-ELECTRONICS UK, LTD.**  
Samsung House, 1000 Hillswood Drive,  
Hillwood Business Park Chertsey, Surrey KT16 0PS  
Tel : +44-1932-45312 Fax : +44-1932-45325

**TIANJIN SAMSUNG OPTO-ELECTRONICS CO., LTD.**  
7 Pingchang Rd., Nankai Dist. Tianjin 300190, P.R.China  
Tel : +86-22-2761-4724(33821) Fax : +86-22-2761-6514

### DISTRIBUTED BY



I.D-0804

## Powerful Network Integration Management!



Samsung Network Manager  
**SNM-64P**

Samsung Network Recorder  
**SNR-32A/16A/9A**

### imagine Powerful Integrated Surveillance

The SNM-64P (Samsung Network Manager Professional) is a centralized management software program which enables one to manage integrated Samsung Techwin DVR and network products connected to the network through a single user interface. The SNR-32A/16A/9A is a feature-rich network recording software that can record up to 32 network-based units and is compatible with the SNM-64P.



