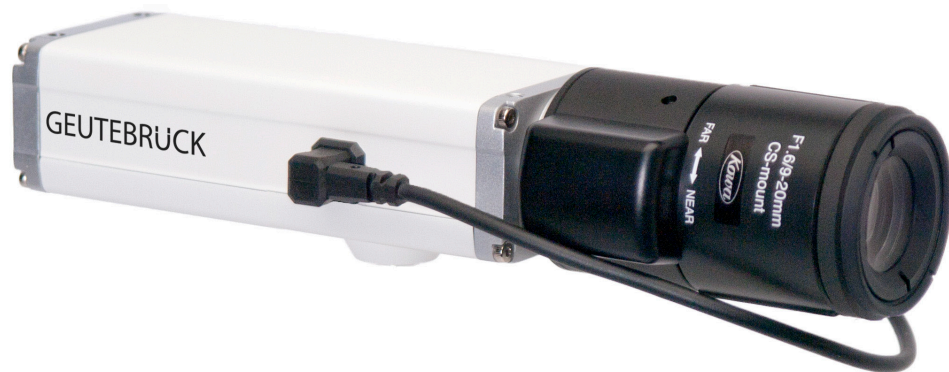


# TopBC-2113

GEUTEBRÜCK camera out of the TopLine series



## Product information

The high resolution 720p HD box IP camera out of the GEUTEBRÜCK TopLine series sets standards in the world of digital video surveillance. The camera can be integrated license free and fits seamlessly into all digital recorder systems from GEUTEBRÜCK. Equipped with a 1/3" CMOS sensor, an automatic IR cut filter and progressive scanning, the camera delivers brilliant and crystal clear pictures both at day and night with picture rates of up to 30 fps. All details of the picture are captured with HD resolution and are transmitted in the compression format H264CCTV which is specially optimized for video security systems - for a professional and gap free video surveillance. Many comfort functions combined with excellent workmanship and its very compact dimensions makes the ensemble perfect. Besides a local voltage supply the camera can be powered centrally via PoE – for highest installation flexibility.

- | H264CCTV compression format for professional video surveillance and optimal performance
- | Fluent and gap free picture playback in forward and backward directions
- | HD-Resolution (720p) for brilliant picture quality
- | CMOS technology for best recordings also under back light conditions
- | Full and license free integration into all digital GEUTEBRÜCK picture recording systems

**GEUTEBRÜCK**  
Competence in Video Security

## Technical data

Image sensor (Chip)	1/3" CMOS
Picture format	4:3 / 16:9 / multiple areas of interest (AOI)
Scanning system	Progressive scan
Pixel (H x V)	1280 (H) x 720 (V) effective
Pixel size	2.2 µm x 2.2 µm
Minimum sensitivity:	
Color	0.55 Lux / F1.2 (IR cut filter)
B/W	0.13 Lux / F1.2 (IR pass filter)
Day/Night function	Removable IR cut filter
White balance	Automatic
Exposure	Automatic / Manual
Shutter	Automatic electronic (AES),
Back Light Compensation	Automatic
Flickerless	Automatic
Automatic gain control (AGC)	Yes
Electronic PTZ function	Yes
Text overlay	Yes
Interface	Browser interface
Mirror-Function	180° Image rotation
Compression	H264CCTV (GEUTEBRÜCK), MJPEG (Multiple compression levels), MPEG4 (SP, Level 3)
Picture rate (full resolution)	H264CCTV: 30 fps MJPEG: 25 fps; MPEG4: 30 fps
Resolutions	From 64 x 64 up to 1280 x 720 pixel (free scaling)
Video Streaming	Multi-encoding and Multi-streaming for H264CCTV, MJPEG and MPEG4; VBR and CBR for H264CCTV, MJPEG und MPEG4
Protocols	TCP/IP, HTTP, FTP, UDP, ICMP, ARP, DHCP, NTP, RTP, RTSP, RTCP, SMTP, IGMP, ZEROCONF, QoS Layer 3
Processor / Memory	Multimedia Video Processor, FPGA; 256 MB RAM, 32 MB Flash
Motion detection	Yes
Alarm management	Ring buffer for pre- and post alarm; Events triggered via Motion Detection or external input; Image upload over FTP, email or HTTP
Privacy masking	Yes
Lens mounting	CS-mount
Lens connection	DC lenses (AI-DC, connection via standard 4-pin socket)
Operating temperature	0 °C to + 50 °C
Voltage supply	PoE (IEEE 802.3af class 2) or 7 - 24 V DC
Power consumption	Max. 5 W / 12 V DC
Dimensions in mm (W x H x D)	44 x 29 x 109.7
Connectors	RJ-45 for 10/100 BASE-T Ethernet, full or half duplex; 8-pin terminal for power supply, digital I/O, RS-485
Weight	Approx. 210 g
Certifications	DIN EN 50130-4, FCC, CE, RoHS
Licensing	Licence/GSC/IP-Cam (8.10405) built-in
Accessories	Data CD and system plug
Brand	GEUTEBRÜCK
<b>Order No.</b>	<b>5.02810</b>

Technical alterations reserved

**GEUTEBRÜCK GmbH**

Im Nassen 7-9 | D-53578 Windhagen | Tel. +49 (0)2645 137-0 | Fax-999 E-mail: info@geutebrueck.com | Web: [www.geutebrueck.com](http://www.geutebrueck.com)