

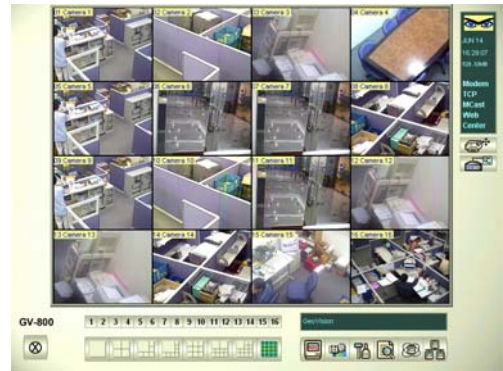


FREE PHONE: 0808 180 18 18

Fax: 01462 708827

sales@ezCCTV.com

www.ezCCTV.com



GV1000 DATA SHEET

The professional's Choice

The Multicam system with built-in motion detection technology, records only moving objects in the view port area. These video images are digitized, captured with date and time, compressed and kept on a PC's hard disk as a file for later tracking. No more round the clock recording on videotape like conventional surveillance systems. It also allows remote viewing by Modem, TCP/IP, IP Multicast and IPX with our own remote view application or through your internet web browser, acting just like a [WebCam](#).

Features

- Motion detection, round-the-clock, or by schedule recording
- Send alarm/messages to monitoring units or communication devices when detect intruder. E-mail, Phone or I/O device
- Multiple passwords to view authorized cameras; 5 Tier password operation from Guest through to Administrator
- Programmable multiple detection zones for each camera (mask function) along with sensitivity adjustments
- High Resolution Video Display and compression options; MPEG and Wavelet compression selection
- 16 Channel Audio Tracks
- 2 way on-site to remote audio
- Snapshot for each camera and individual quick save .AVI film
- Remote viewing, playback and recording and accessible over any Internet Browser, Explorer, Netscape, etc.
- Remote monitoring through modem, TCP/IP, web browser
- Unlimited users view from remote without taking extra bandwidth (LAN)
- Digital Watermark for footage authentication
- Surveillance System + 8 Software applications all included
- GeoCentre remote monitoring station and remote record
- IP Multicast – 10 systems over LAN
- EZ Back up for DVD-RW, CDRW, Zip, MO or other media

Built-in HTTP server as web cam application that is suitable for embedding your selected cameras into Client's website for examples visit www.ezcctv.com/democam2.htm

This group of products provides digital security, surveillance capabilities with digital storage to hard disk of recorded events, complete with date and time stamp with frame by frame review of recorded events per camera to provide visual evidence of intrusion detection, or other forms of triggers. Also includes selectable Pre and Post recording buffer. Such recording can be on a dedicated system, or onto a nominated hard disk (partition) at the LAN server. These systems provide motion detection with sensitivity and active 'on' solutions as well as selection of motion hot spots per camera connected.

All active cameras can be displayed on the 'internal' monitor of the Host computer; 'hidden' cameras can be removed from display. The System can be set up to generate evidence by recording activities, or simply provide the ability for surveillance of one or all cameras from within (local) or afar, via LAN/Internet or PSTN / ISDN modem connections.

Motion detection can cause an internal alarm, alerting a monitoring system within a LAN/WAN environment, or 'Dial-up' via modem to

Specification

O/S	Windows 2000, Windows XP, Windows 98,
CPU	Pentium PIV (min)
Memory	512MB RAM (min)
Hard Drive	60 GB (min) – recommend multiple 120GB or 250GB Drives
VGA Card	64 MB
Video Input	16
<u>Watchdog</u>	Yes
Screen Display Rate	480 fps / system (NTSC) 400 fps / system (PAL)
Recording Rate	480 fps / system (NTSC) 400 fps / system (PAL)
Playback Rate	480 fps / system (NTSC) 400 fps / system (PAL)
Compression Format	MPEG4, Wavelet
Video Format	Avi
Image Format	bmp, jpeg, tif
Networking	LAN, TCP/IP, ISDN, PSTN, ADSL
Remote Monitoring Software	Remote View, IP MultiCast, WebCam, GeoCenter
Sensor Input	Input pin 8, extendable to 72 (optional)
Relay Output	Output pin 8, extendable to 72 (optional)
Backup Function	HDD, CD-R, MO, ZIP
Language	English, Japanese, German, Simplified Chinese.
Safety	FCC, CE
GV-DSP-16 GV-DSP-8	Optional: DSP Real-Time card for additional TV monitoring and completely views all cameras in absolute real-time. Display can also be selected for non display of covert cameras.

Packaging

System CD-ROM	1 pc
Capture Card	1 pc
KeyPro (dongle)	No Longer Required
User Manual	1 pc



GeoVision is suitable for all PCI feature enclosures; Standard case with silent fans, Mini-Shuttle or 19" Industry Rackmount and other specialist application enclosures - (not pictured)

generate a 'pager' call to the nominated security company, or wake-up a designated remote system to display the offending event via LAN/WAN/Internet or modem connection.

All of the cameras can be observed, either all at once or one by one with image freeze, zoom and pan capabilities to aid recognition and detection of offending persons / events.

Security passwords protect the surveillance system from unauthorised 'look ins', yet more than one location can be authorised to initiate surveillance calls.

All recorded events are identifiable with a secure audit trail, showing full details of recording of events, as well as details of earlier 'viewing' attempts.

Time to permit authorised entry, or exit prior to the system assuming its guarding role can be programmed, instant print out (Network Printer) of still images selected for evidence is available.

Both colour and grey level can be selected for image display / image enhancement and/or print out.