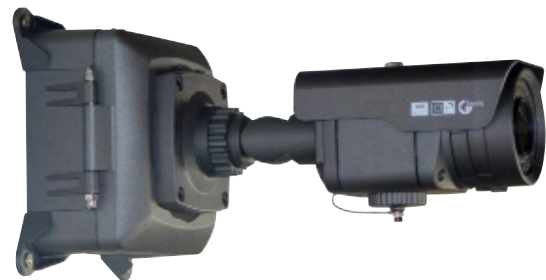


TECHNICAL DATA SHEET

ZD2812IR/ACW

Intus Ultra High Resolution True Day/Night Night Vision Camera with Anti-Cobweb Function



Camera with INTUS/JB

KEY FEATURES

- 1/3" Sony Super HAD CCD
- Ultra High Resolution, 550 TVL
- Impact Resistant Housing
- Mechanical IR Cut-Filter
- 3D-Digital Noise Reduction (SDNR)
- Digital Wide Dynamic Range (D-WDR)
- Anti Cobweb Function*
- Built-in 35pc IR LEDs
- Up to 30 Metres Illumination Range*
- Selectable Gain Control
- Selectable White Balance (inc HSBLC)
- Selectable Back Light Compensation
- 256x Sens-Up
- O.S.D. Menu
- Privacy Function
- Sunshield & Heater
- External Control Rings for Easy Focus & Distance Adjustment
- Wall/Soffit Mount
- IP66 Rated
- DC 12V

ORDERING INFORMATION

ZD2812IR/ACW Night Vision Anti-Cobweb Camera with 2.8-12mm DC AI VF Lens

INTUS/JB Junction Box

* Anti-Cobweb function emits a high frequency signal that deters spiders from creating a cobweb over the camera
* Important Note - The illumination range assumes ideal conditions

TECHNICAL DATA SHEET

TECHNICAL SPECIFICATION

Model Number	ZD2812IR/ACW
Image Sensor	1/3" Sony Super HAD CCD
Horizontal Resolution	550TV Lines (Colour), 600TV Lines (B/W)
Sensitivity (F1.2)	0.00006 Lux
Lens	2.8-12mm DC Auto Iris Varifocal Lens
Angle of View	120° ~ 30°
Digital Zoom	On (x32) / Off
Effective Pixels (H x V)	752 x 582
Electronic Shutter Speed	1/50 ~ 1/120,000 Sec
Scanning System	2:1 Interlace
Synchronisation	INT/LL Selectable
Sens-Up	Auto / Off (Selectable limit x2 ~ x256)
S/N Ratio	52dB (AGC Off)
Day / Night	Colour / Auto / Ext / B&W
O.S.D.	Yes
Dynamic Range	52dB (x128)
Gain Control	High, Middle, Low, Off Selectable
White Balance	ATW / AWB / Manual / SET AWC
Back Light Compensation	BLC / HSBLC / Off Selectable
3D-DNR (SDNR)	Off / On (1~100 Level Adjustable)
D-WDR	Indoor / Outdoor / Off
Sharpness	0 ~ 31'(Level Adjustable)
Privacy Function	On/Off (8 Zone)
Motion Detection	On / Off (4 Zone, Alarm Output)
Mirror	Off / Mirror / V-Rev / Rotate
Freeze	On/Off
Blemish Compensation	256 Point (Even 128 Point, ODD 128 Point)
IR LEDs	35pc IR LEDs, 30m Illumination*
IR Beam Angle	60°
IP Rating	IP66
Operating Conditions	Temperature: -20°C ~ +50°C, Humidity: 95% RH
Power Supply	DC 12V
Power Consumption	CDS ON: 500mA Max
Dimensions (W x H x D)	88 x 115 x 245 mm
Weight	1.6 Kg

Features and specifications are subject to change for further improvement without any notice

* Important Note - The illumination range assumes ideal conditions