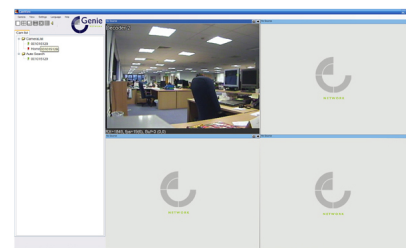


## TECHNICAL DATA SHEET

# NB309IR

## Simple IP IR Bullet Camera



## KEY FEATURES

### CAMERA FEATURES

- 1/3" Sony Super HAD CCD
- Standard Resolution (420 TVL)
- Bodied Camera, Bullet Camera, Mini Dome Camera and Vandal Dome Camera Options
- Auto White Balance
- Auto Gain Control
- Auto Selection (PAL or NTSC)
- 15 Metres IR Illumination\*
- IP66

\* The Infra-red range assumes ideal conditions

### NETWORK FEATURES

- Self-Networking
- MPEG-4 Compression
- Connect to Cameras from Anywhere
- Free Client Software
- 4 to 20 Simultaneous Users
- Adjustable Frame Rate
- Image Quality Settings (VGA / QVGA / QQVGA)
- Automatically Adjusts Image Quality by Network Bandwidth
- Bandwidth Settings
- Adjustable Bandwidth from 64 Kb to 1.5Mb
- Manual and Motion Detection Recording
- Multi Protocols
- Web Managed Password Protection

## TECHNICAL DATA SHEET

- Supports Microsoft Windows XP or Above
- Minimum Hardware Requirements: Pentium 4 CPU 1.0 GHz or Higher
- ID Card Supplied with each Camera

# TECHNICAL DATA SHEET

## TECHNICAL SPECIFICATION

Model Number	NB309IR
Image Sensor	1/3 Sony Super HADCCD
Lens	3-9mm DC AI Varifocal Lens
Horizontal Resolution	420 TVL
Sensitivity @ 50IRE (F1.4)	0.5 Lux 0 Lux (With IR ON)
Scanning System	2:1 Interlace
Video Format	PAL / NTSC
Effective Pixels (H x V)	500 x 582
Synchronisation	Internal
Frequency	Horizontal: 15.625 KHz
Shutter Speed	1/50 ~ 1/100,000 Seconds
S/N Ratio	>48dB (AGC Off)
Automatic Gain Control	ON / OFF
Auto Electronics Shutter	ON / OFF
Back Light Compensation	ON / OFF
White Balance	ATW / AWB
Power Consumption	Max 3.8 W
Power Supply	DC 12V
Operating Conditions	Temperature: -10°C ~ +60° C, Humidity: 30% ~ 80% RH
Dimensions (D x H)	73 x 134 mm
Weight	460g
Interface	Ethernet 10/100 Base-T / 100 Base TX Auto MDIX RJ-45
Protocols	IPv4 / HTTP / TCP / ICMP / RTSP / RTP / UDP / IGMP / RTCP / SMTP / FTP / DHCP / UPnP / ARP / DNS / PPPoE
Video Output	1 Composite (1 Vpp 75 Ohm BNC)
Video Compression	MPEG-4
Video Resolutions	176 x 144, 352 x 288, 720 x 576
Video Frame Rate Range	1, 2, 3, 4, 5, 10, 15, 20, 25 fps
Video Bandwidth	Configurable Between 64k to 1.Mbps
Video Management Software	Genie View Software Supports Web Viewing and Archiving (Up to 16 IPCameras)
Video Hardware Requirements	Pentium 4CPU 1.0 GHz or Higher DRAM 512 MB or Higher
Video Supported Operating System	Microsoft Windows XP SP2 or Above Framework 2.0
Users	Up To 5 Simultaneous Users (Unicast)
Alarm and Event Management	Events Triggered by Video Motion Detection. Notification by Email Upload JPEG Images to FTP

Features and specification are subject to change for further improvement without any notice.