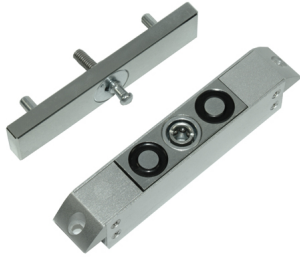


TECHNICAL DATA SHEET

GAMEM 1900 FM

Specialist Surface Mount Magnetic Lock



KEY FEATURES

- Exclusive Patented Design
- Mini Sized Magnet with a Standard Magnet Holding Force
- Corrosion Proof (ISO Tested)
- No Residual Magnetism
- Built-in MOV Surge Protection
- 2 Year Guarantee
- Built-in Early Warning Pressure Sensor

TECHNICAL DATA SHEET

TECHNICAL SPECIFICATION

Model Number	GAMEM 1900 FM
Holding Force	400Kg
Operating Voltage	DC 12V
Current Consumption	300mA
Locking Monitoring	YES
Door Position Monitoring	YES
Early Warning Alarm	Relay Output
Long Range Status LED	NO
Finish	Brushed Aluminium
Magnet Dimensions (WxHxD)	128 x 21.6 x 25.7 mm
Accessories	Z + L Brackets Available
Weight	370g

Features and specification are subject to change for further improvement without any notice.