



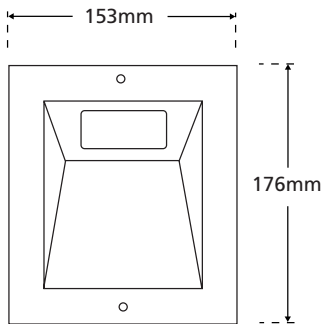
**DISCREET CAMERA**

**MONOCHROME**

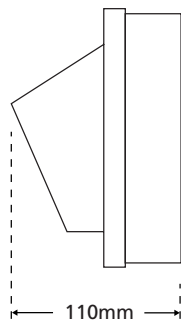
# CW-510VR



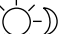

- Outdoor vandal-resistant high resolution monochrome ceiling/wall mount camera

View from front



Side view



-  1/3" CCD
-  560 TV lines
-  0.2 lux sensitivity
-  Supply voltage: 12 Vdc

### Lens options

Lens	Product Code
4.0mm	CW-510VR
2.5mm	CW-510VR/2.5
6.0mm	CW-510VR/6.0
8.0mm	CW-510VR/8.0
12.0mm	CW-510VR/12.0

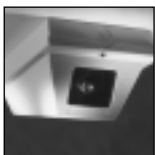
All lens options are the same price

- Superb picture quality
- Beige, powder-coated, 1.5mm stainless steel housing designed to IP65
- Easily replaceable, toughened, 4mm thick, polycarbonate viewing window
- Smoked viewing window also available - product code: VR-WGR
- Tamper-proof upgrade kit available - product code: VR-TRK
- Camera module mounted on manually adjustable miniature 'swivel and tilt' cradle, for exact camera positioning
- Comes with built-in 220Vac heater and thermostat to prevent misting
- Two conduit knockouts to enable vandal-resistant cabling

*"These units are small, can withstand a very high level of abuse and we would recommend their use"*

PSI Magazine Bench Test - October 1998

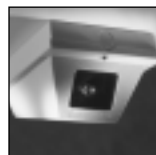
See Also:



**CW-710VR**  
High resolution colour option



**CW-310VR**  
Standard resolution monochrome option



**CW-610VR**  
Standard resolution colour option

**VIDEO**

### SPECIFICATION

SPECIFICATION	MOD-507 camera module
Image sensor	1/3" CCD sensor, 725 (H) x 582 (V) pixels
Horizontal resolution	560 TV lines or greater
Lens options	SEE TABLE
Electronic shutter	Automatic linear shutter
Sensitivity	0.2 lux
Video output	CCIR, 1Vp-p, 75 Ohms
Supply voltage	12 Vdc ± 10%
Working temperature	-10°C to +50°C

Specification and availability of products are subject to change without notice