

MEGAPIXEL CAMERA RANGE

HDTV Megapixel Cameras

Lenses



Cameras

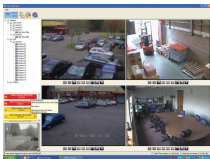


Hardware

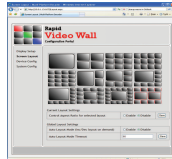
- HDTV resolution images
- Low light
- Up to 5 megapixel resolution
- Electronic pan tilt zoom
- Day or night (C-MP3P range)
- 2 Sensors (C-MP3P range)
- No moving mechanical parts
- Fully programmable
- Power over Ethernet (PoE)
- VSoIP compatible

Control Room

Perfect Partners



VSolP Management Software
Page 68



VSolP Video Wall
Page 77

IP Media & Transmission

The C-MP5P and C-MP3P HD surveillance cameras with up to 5 megapixel resolution can stream video up to 2560x1600 resolutions.

These IP based cameras provide zoomed areas to give greater detail. This also enables forensic examination of areas of the image that were unrecognisable in the past. The high definition images are up to 5 times the resolution of an analogue CCTV camera.

The C-MP3P HD megapixel day/night camera produces high quality in the day or night: 3 megapixels in the day and, when the light level falls, a 1.3 megapixel mono sensor takes over. Switching between the two sensors is performed automatically.

The camera can be powered over the network or locally via a separate 12V DC power supply.

Radar Detection

Model	C-MP5P	C-MP3P
Sensor	1/2" 5Mpixel	1/2" 3Mpixel colour 1.3Mpixel mono
Lens	C/CS mount	2x C/CS mount
Networking	1x Ethernet RJ45 100baseT	1x Ethernet RJ45 100baseT
Max Bandwidth	55Mbps	55Mbps
Compression	Motion JPEG20 levels (quality)	Motion JPEG20 levels (quality)
Power Supply	12V DV or PoE	12V DV or PoE
Power consumption	45Watt (max)	45 Watt (max)
Dimensions	125mm(L) x 76mm(W) x 64mm(H)	125mm(L) x 76mm(W) x 64mm(H)
Weight	450g	450g

ANPR

Ordering Codes:

- C-MP5P 5 Megapixel Colour HD Networkable IP Camera
- C-MP3P 3 Megapixel Colour and Mono HD Networkable IP Camera

Accessories