

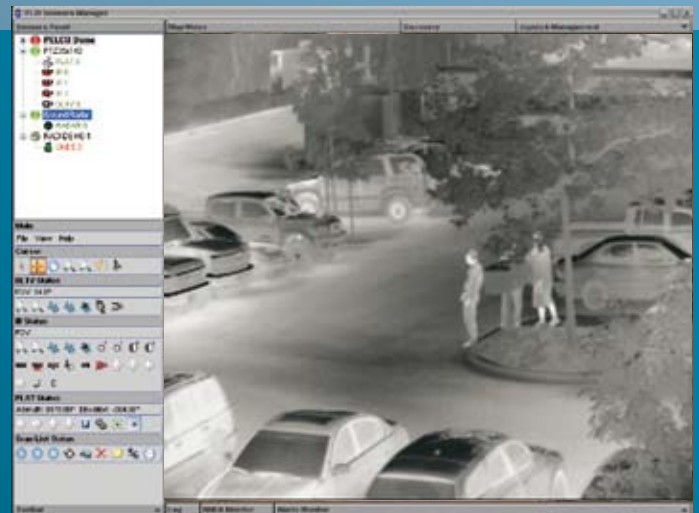
Software for sensor networks



FLIR Sensors Manager

Software to manage and control FLIR Systems thermal imaging cameras for security and surveillance applications.

FLIR Sensors Manager offers powerful and efficient management capabilities for any security installation with FLIR Systems thermal imaging cameras. FLIR Sensors Manager allows to automatically locate FLIR Systems thermal imaging cameras in the network and to easily control them. Just connect the thermal imaging camera to the network, install FLIR Sensors Manager and hit the “discover” button and you will be able to manage and control the camera. Thanks to FLIR Sensors Manager, the management of FLIR Systems thermal imaging cameras over a network will become extremely easy.



With FLIR Sensors Manager installing and managing FLIR Systems thermal imaging cameras and other Nexus sensors in a network becomes extremely easy.

Easy to use

FLIR Sensors Manager is a commercial “Out of the Box” software. Fully designed and supported by FLIR Systems, this application guarantees an intuitive and simple user experience. Just install the software and you will be ready to use it immediately. You can even tailor the layout to your own needs.

Different versions available

FLIR Sensors Manager is available in two different versions: Basic and Pro. Depending on your exact needs and your security network, you can choose the version that best fits your system’s requirements. A free demo version is available and can be downloaded from our website.

Basic:

The Basic version of FLIR Sensors Manager allows to:

- Discover sensors in the network
- Command and control of up to four networked sensors: focus, pan/tilt, zoom...
- Display network video
- Define presets
- Manage scan lists
- Create panoramas
- Configure user profiles (toolbars, layout, etc)
- Show thermal images on multiple monitors
- Capture images
- Geo Mapping



Geo-mapping allows to geo-calibrate a map so that any geo-referenced Nexus sensor can be managed and displayed on it. This feature adds usability and situational awareness and is included in the Basic version of FLIR Sensors Manager.

Pro:

The Pro version of FLIR Sensors Manager contains all the features that are incorporated in the Basic version, plus a number of useful modes that will help you make the most out of your security network.

Video analytics

Allows to perform video analytics within FLIR Sensors Manager. It includes:

- Video Motion Detection: FLIR's proprietary algorithm will work on thermal or visible video in the most harsh environments.
- Target detection with alarms based on spatial rules like trip wires crossing or areas triggered by enter, exit or both events.
- Software based video-tracking of moving objects for control of PTZ sensors.



E-stab

Provides a steady image. Can be extremely useful when cameras are installed on high poles where they can be affected by wind or vibration.

Radar Cueing and radar tracks display

Allows display of real-time position and classification information of radar targets (ID, course, speed, lat/lon, classification, ...) coming from Nexus enabled radars. Allows users to command cameras in advanced radar slave modes (ARPA tracking).

Video wall display

Allows fully configurable video mosaic layouts, supporting both network and analog frame grabber sources.



Connect a large number of sensors

Both the Basic and the Pro versions of FLIR Sensors Manager allow multiple users to share monitoring and control of up to four FLIR Systems thermal imaging camera.

Different license packages to manage more than one camera are available. Additional sensor licenses can be added to manage up to 50 sensors from a single workstation. Packages can be upgraded so that FLIR Sensors Manager can grow together with your security network.

Control a wide variety of sensors

FLIR Sensors Managers not only works together with FLIR Systems thermal imaging cameras. Using Nexus technology, it can also be used to control a wide variety of other sensors like radars, ground sensors and many others and to make these sensors interact with FLIR Systems thermal imaging cameras in so called "slew-to-cue" configurations.

Support for multiple languages

FLIR Sensors Manager can be configured to work in different languages, including English, French, German, Italian, Spanish, Chinese, Japanese, Russian, Arabic, Portuguese and Polish.

FLIR Networked Systems, s.l.u.

Av. Bruselas, 6 – B2
28109 Alcobendas, Madrid
Spain
Phone : +34 (91) 490 40 60
Fax : +34 (91) 662 97 48
e-mail : fns@flir.com

FLIR Commercial Vision Systems B.V.

Charles Petitweg 21
4847 NW Teteringen - Breda
The Netherlands
Phone : +31 (0) 765 79 41 94
Fax : +31 (0) 765 79 41 99
e-mail : flir@flir.com

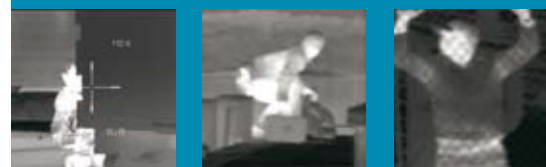
FLIR Systems, Inc

CVS World Headquarters
70 Castilian Drive
Santa Barbara, CA 93117
USA
Phone : +1 805 964 9797
Fax : +1 805 685 2711
e-mail : sales@flir.com

FLIR Systems Sensors Manager Demo, Basic and Pro: overview

Features	Demo	Basic	Pro
Discover sensors in the network	•	•	•
Point-to-point sensor control: focus, pan/tilt, zoom, ...	•	•	•
Display network video	•	•	•
Define presets	•	•	•
Manage scan lists	•	•	•
Create panoramas	•	•	•
Configure user profiles (toolbars, layout, etc)	•	•	•
Show thermal images on multiple monitors	•	•	•
Capture images	•	•	•
Geo-mapping		•	•
Video analytics			•
E-stab			•
Radar cueing / radar tracks display			•
Video walls			•
Number of managed sensors	1	4	4
Licenses for more sensors available	•	•	•

www.flir.com



Your local dealer: