



FC-Series

FLIR FC-SERIES S

Fixed Network Thermal Cameras

Get the best image detail and optimal intrusion detection in challenging imaging environments with the FLIR FC-Series S thermal network camera. As FLIR's flagship thermal security product, the award-winning FC-Series S camera sets the industry standard, providing accurate and cost-effective perimeter detection and visual alarm verification. The FC-Series S is capable of replacing multiple visible cameras and any additional lighting and infrastructure needed to support them. With the ability to classify human or vehicle intrusions, FC-Series S provides reliable detection and flexible alarming options by email, web and mobile apps, edge image storage, digital outputs, or VMS event notifications.

COST-EFFECTIVE INTRUSION DETECTION.

Most popular and reliable thermal imager in the industry

- High-contrast thermal images provide best-in-class detection with minimal false alarms
- Digital Detail Enhancement (DDE) & Wide Dynamic Range Thermal image processing combine to give you optimal images in all scene conditions
- 24/7 intrusion protection regardless of lighting and environmental conditions

FEATURE-RICH EDGE ANALYTICS.

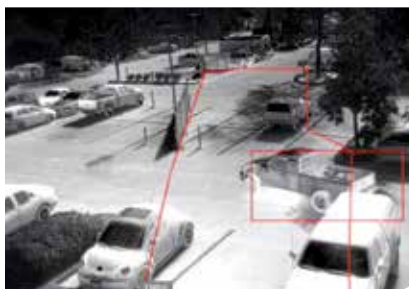
Powerful on-board analytics capable of classifying human or vehicle intrusions

- Multiple alarm notification options, including email, digital outputs or VMS alarms
- Camera configuration via web interface, FSM PC application or mobile apps
- Ideal for use with third-party analytics, including those provided by FLIR's partners around the world
- ONVIF compliant – interoperable with most video management systems

RUGGED INDUSTRIAL DESIGN.

Enterprise-class design and materials deliver optimal performance in harsh conditions

- Only thermal camera with both IP66 and IP67 dust & water protection. -50 to 70C (-58 to 158F) Plus it's shock, vibration, and corrosion-resistant
- More fields of view and resolution options than any other thermal imager; supports optimal camera selection and deployments
- PoE, AC and DC inputs, analog and network outputs
- 3 year camera, 10-year detector warranty



FC-Series thermal network cameras can detect human or vehicle intrusions and alert you in multiple ways, including by email, digital outputs or VMS alarms.

Specifications

| Camera Model | FC-Series S | FC-Series S |
|---|---|---|
| Array Format (NTSC) | 320 x 240 | 640 x 480 |
| Detector Type | Long-Life, Uncooled VOx Microbolometer | |
| Effective Resolution | 76,800 | 307,200 |
| Pixel Pitch | 25 µm | 17 µm |
| Field of View | 63° × 50° (FC-363; 7.5 mm) 48° × 39° (FC-348; 9 mm) 34° × 28° (FC-334; 13 mm) 24° × 19° (FC-324; 19 mm) 13° × 10° (FC-313; 35 mm) 9° × 7° (FC-309; 35 mm, 17 µm) | 90° × 69° (FC-690; 7.5 mm) 69° × 56° (FC-669; 9 mm) 45° × 37° (FC-645; 13 mm) 32° × 26° (FC-632; 19 mm) 18° × 14° (FC-618; 35 mm) |
| Zoom | Continuous eZoom, up to 4X | |
| Spectral Range | 7.5 µm to 13.5 µm | |
| Focus Range | Athermalized, focus-free | |
| Outputs | | |
| Composite Video NTSC or PAL | Yes; hybrid system with IP & analog video | |
| Video over Ethernet | Two independent channels of H.264, MPEG-4 & M-JPEG (see website for full details) | |
| Streaming Resolution | D1: 720x576, 4CIF: 704x576, Native: 640x512, Q-Native: 320x256, CIF: 352x288, QCIF: 176x144 | |
| Control | | |
| Ethernet | Yes | |
| External Analytics Compatible | Yes | |
| Network APIs | Nexus SDK for comprehensive system control and integration Nexus CGI for http command interfaces ONVIF 2.0 Profile S | |
| General | | |
| Weight | 4.0 lb (1.8 kg) w/o sun shield 4.8 lb (2.2 kg) w/sun shield | |
| Dimensions (L, W, H) | 9.2" x 4.6" x 4.1" w/o sun shield 10.8" x 5.4" x 4.4" w/ sun shield | |
| Input Voltage (Consult product manuals for feature/ power requirements) | 11-44 VDC (no lens heaters) 16-44 VDC (w/lens heaters) 14-32 VAC (no lens heaters) 16-32 VAC (w/lens heaters) PoE (IEEE 802.3af-2003) PoE+ (IEEE 802.3at-2009) | |
| Input Voltage | 12-38 VAC 11-56 VDC PoE (IEEE 802.3af-2003) PoE+ (IEEE 802.3at-2009) | |
| Power Consumption (Consult product manuals for detailed power requirements) | 24 VDC 5 W nominal 21 W peak (w/heaters) 24 VAC 8 VA nominal 29 VA peak (w/heaters) | |
| Approvals | FCC Part15, Subpart B, Class B CE: EN 55022 Class B | |
| Surge Immunity on AC Power Lines | EN 55024: 2010 and 55022: 2010 to 4.0kV on AC aux power lines | |
| Surge Immunity on Signal Lines | EN 55024: 2010 and 55022: 2010 to 4.0kV | |
| Environmental | | |
| IP Rating | IP66 & IP67 | |
| Operating Temperature Range | -50°C to 70°C (continuous operation) -40°C to 70°C (cold start) | |
| Storage Temperature Range | -55°C to 85°C | |
| Humidity | 0-95% relative | |
| Shock | MIL-STD-810F "Transportation" | |
| Vibe | IEC 60068-2-27 | |
| Image Optimization Features | | |
| Thermal AGC Modes | Auto AGC, Manual AGC, Plateau Equalization AGC, Linear AGC, Auto Dynamic Detail Enhancement (DDE), Max Gain Setting | |
| Thermal AGC Region of Interest (ROI) | Default, Presets and User definable to insure optimal image quality on subjects of interest | |
| Image Uniformity Optimization | Automatic Flat Field Correction (FFC) - Thermal and Temporal Triggers | |

SANTA BARBARA
FLIR Systems, Inc.
70 Castilian Drive
Goleta, CA 93117
USA
PH: +1 805.690.5097

PORTLAND
Corporate Headquarters
FLIR Systems, Inc.
27700 SW Parkway Ave.
Wilsonville, OR 97070
USA
PH: +1 866.477.3687

BELGIUM
FLIR Systems
Luxemburgstraat 2
2321 Meer
Belgium
PH: +32 (0) 3665 5100

CHINA - SHANGHAI
FLIR Systems, Co., Ltd.
K301-302, No.26 Lane
168, Daduhe Road,
Putuo District, Shanghai
200062, P.R.China
PH: +86-21-5169 7628

www.flir.com
NASDAQ: FLIR

Equipment described herein may require US Government authorization for export purposes. Diversion contrary to US law is prohibited. Imagery for illustration purposes only. Specifications are subject to change without notice. ©2014 FLIR Systems, Inc. All rights reserved. (Updated 12/03/14)