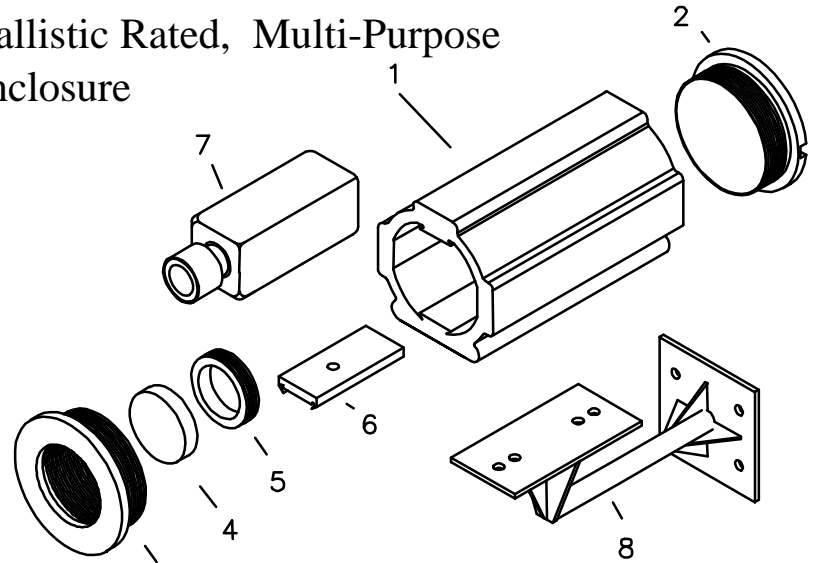


## EX60 Explosion Protected - Ballistic Rated, Multi-Purpose Full Size Surveillance Enclosure

The larger version of the world's only explosion protected and bullet resistant surveillance camera system will house all major brands of surveillance cameras. Most motorized zoom lenses can also fit within the size range of the EX60. Designed for a multitude of applications from explosive gas environments to outdoor urban street surveillance, the EX60 can be considered explosion proof, bullet proof, water proof, dust proof, bug proof and just-about-anything-else proof for practical applications anywhere. Its Class I, Groups A and B ratings for Acetylene and Hydrogen makes this housing unique in industry. (See test results or consult with Extreme CCTV engineers for any known limitations).

The EX60 is also designed to CCTV industry standards for mounting hardware and motorized pan/tilt devices.



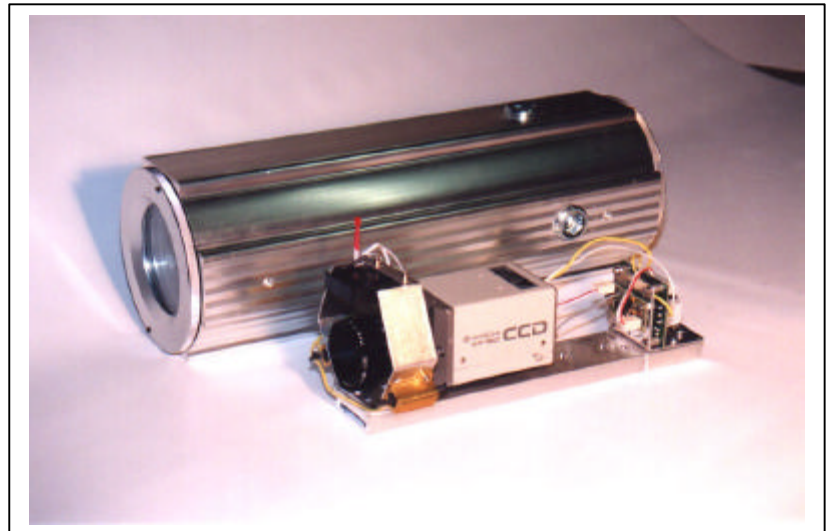
### Legend:

1. EX60 housing Copper-Free Aluminum.
2. End cover with locking pin.
3. View cover with locking pin.
4. View window, 3/8" tempered glass  
Ballistics Insert 3/4" Lexgard (optional)
5. Retaining ring.
6. Camera guide tray with locking pin.
7. Standard CCD camera. (optional)
8. Standard Mounting Hardware (optional)

### Features:

- Heavy Duty Extruded Aluminum Design
- UL Class I Groups A, B, C, D, Div 1 & 2
- UL Class II Groups E, F, G, Div 1 & 2
- CSA approved
- Easy access slide tray for camera guide
- 3/8" chemical resistant Pyrex window
- Ballistics insert (optional)

**Right:** A slide track allows for easy installation of CCD cameras. The heater, blower and control modules are provided as an optional kit.



Dealer / Distributor :

**Derwent Extreme Technologies Inc.**

Global HQ: [www.ExtremeCCTV.com](http://www.ExtremeCCTV.com)

USA/Canada: 4060 McConnell Drive, Burnaby, BC Canada V5A 3A8  
Toll Free N.A. 888-409-2288 Tel. +1.604.533.6644 Fax +1.604.533.7800

**General Specifications:**

Construction: Aluminum, Extruded, Copper-Free  
3/8" Tempered View Window  
3/4" Lexgard Ballistic Insert (Optional)

Dimensions: EX60.140, approx 5" dia x 14" length  
EX60.200, approx 5" dia x 20" length  
See drawings for exact dimensions

Weight: EX60.140: 15 lbs (6.8 kg) w/o camera  
EX60.200: 20 lbs (9.1 kg) w/o camera



**Certifications:**

Explosion: CSA Class I Groups A, B, C, D, Div 1&2  
CSA Class II Groups E, F, G, Div 1&2

Ballistic: 38 calibre, 9 mm

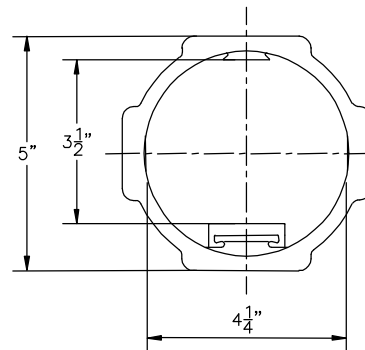
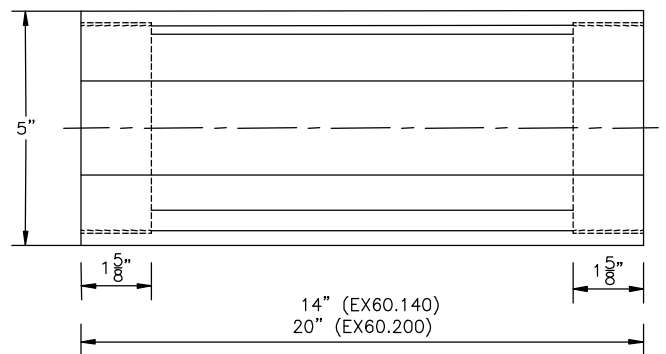
Environmental: NEMA 4

**Part Numbers:**

**EX60.140** 14" length with 4 entry plugs (camera not included)  
**EX60.200** 20" length with 4 entry plugs (camera not included)

**Optional Items**

**EXBI.601** Ballistic Insert Lexan 0.75 inch for EX60  
**EXMB.001** Mounting Bracket, Pan/Tilt Adjust - Wall Mount  
**EXHB.612** Heater / Blower / Thermostat 12 VDC  
**EXHB.624** Heater / Blower / Thermostat 24 VAC



**Note:** The use of explosion protected housings may be subject to local or regional regulatory approval. The authorities having jurisdiction for each installation and application may vary and their respective requirements may differ. The integration of your equipment within the EX60 may also be subject to local authority approval. While Extreme CCTV is not responsible for these specific requirements, it will make available the test plans and certifications if necessary to assist its customers with the requirements of local authorities.

**Applications:**

- *Hazardous Location surveillance*
- *Explosion Protected surveillance*
- *Rugged All-Weather surveillance*
- *Factories, Industrial Plants*
- *Grain Elevators*
- *Munitions Storage*
- *Fuel Storage Facilities*
- *Government Housing Projects*

Dealer / Distributor :

**Derwent Extreme Technologies Inc.**

**Global HQ: [www.ExtremeCCTV.com](http://www.ExtremeCCTV.com)**

**USA/Canada:** 4060 McConnell Drive, Burnaby, BC Canada V5A 3A8  
**Toll Free N.A. 888-409-2288 Tel. +1.604.533.6644 Fax +1.604.533.7800**