

# PowerCon 4.0

## Network management software for digital video recorders and network cameras



### System requirements

**Processor:** PC Pentium IV (1.6 or higher) / AMD Athlon (1.8 or higher)

**Operating system:** Windows XP, service pack 1 or higher

**VGA card:** 32 MB min., 16,7 million colours, with DirectX 9.0C support

**USB:** 2.0 interface

**Memory:** 256 MB RAM

30 MB free HD space for installation

Min. 10 MB free HD space for storage

**Mediaplayer:** Microsoft mediaplayer version 8.x or higher

**Further:** DirectX 9.0C

**Supported DVRs:** EDR 400 / 1600\*

EDSR 100\*

EDSR 400 H / 400 M\*

EDSR 600 / 900 / 1600\*

EDR 410 H / 410 M / 810 H / 810 M

EDR 910 / 920 / 1610 / 1640

\*latest DVR firmware version

**Supported network cameras:** EAN 600 / EAN 800

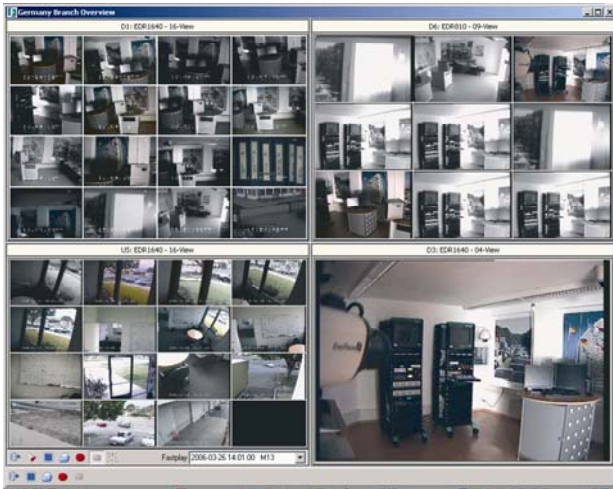
**Versions:** PowerCon 4.0: single client version with USB key

PowerCon 4.0 update: update version for PowerCon Pro and

PowerCon Station (serial number of existing version required)

### Features

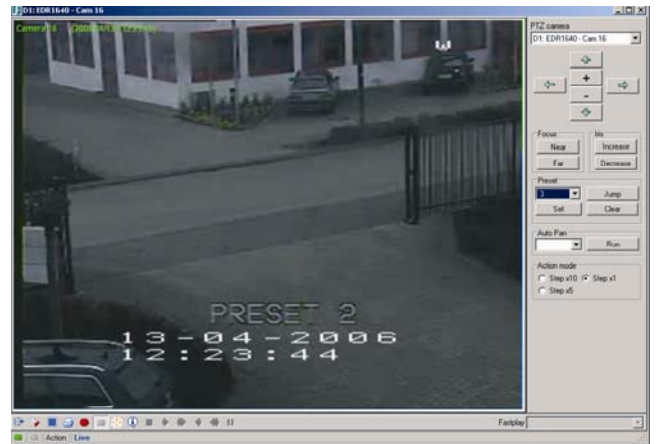
- ✓ unlimited number of managed systems (DVRs, network cameras)
- ✓ live and playback view
- ✓ local storage and printout of video data or single pictures on client PC
- ✓ multi-window design with scalable video windows
- ✓ free definable multiviews with up to 4 DVR systems or network cameras, also mixed display of different DVRs (max. 64 cameras in 1 multiview with 4 x 16-channel DVR)
- ✓ mapview: visualisation of CCTV system in areas or buildings with freely scalable maps / graphics (BMP or JPG format)
- ✓ remote DVR configuration (EDR DVR series only)
- ✓ network alarm reception and management
- ✓ multi-monitor support (depending on PC configuration)
- ✓ advanced access rights management with individual user rights for functions and system access
- ✓ network monitor for visualisation of network traffic
- ✓ system checker: integrated background port checker with alarm function for availability of DVRs and cameras in network
- ✓ support of external program starts



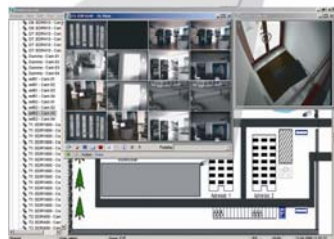
Multiview function enables display of up to 64 cameras from up to 4 different DVRs



PTZ functionality for speed dome and further PTZ cameras during remote viewing



Mapview function: integration of freely scalable maps / graphics (BMP or JPG format) to visualise locations and areas



Multi-window design: graphic surface remains visible while the video images are displayed on additional screens