



EPS 4000 – PowerCon 4.x Station

Hardware specifications

Power: 110 ~ 230 V AC, 300 VA max.

Operating temperature: 0°C ~ 40°C

Material: steel, aluminium front

Dimensions: 430 (W) x 171,5 (B) x 439,6 (D) mm

Weight: 11 kg

System description

To be advised

Supported products

Supported DVRs: EDR 400 / 1600*
EDSR 100* / EDSR 400 H/M* / EDSR 600 / 900 / 1600*
EDR 410 / 810 H/M / EDR 410 D / 910 A/D / 1610 A/D
EDR 920 / 1640

* latest DVR firmware version

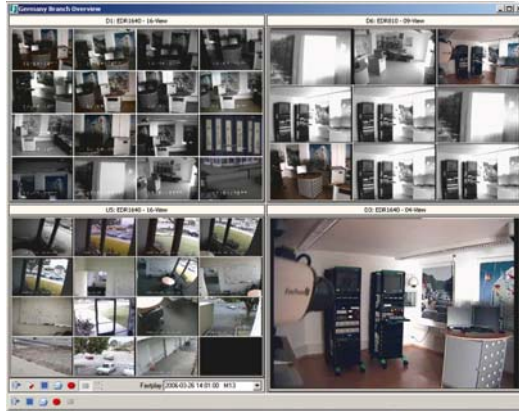
Supported network cameras: EAN 600 / EAN 800 /
EAN 850 A / EZN 850 / EDN 800 T

Supported Megapixel cameras: EAN 1350 / EAN 900

Further supported devices: video servers EVS 400 /
EVS 100
network multi I/O controller EPS 100

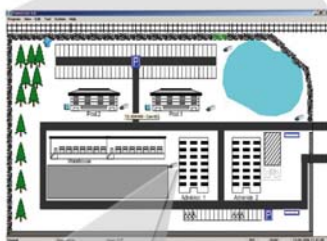
Features

- unlimited number of managed systems (DVRs, Megapixel / network cameras, video servers, 3rd party sequences)
- live and playback view
- local storage and printout of video data or single pictures on client PC
- multi-window design with scalable video windows
- free definable multiviews with up to 16 DVR systems or network cameras, also mixed display of different DVRs (max. 256 cameras in 1 multiview with 16 x 16-channel DVR)
- mapview: visualisation of CCTV system in areas or buildings with free scalable maps, graphics (BMP or JPG format) or active symbols
- remote DVR configuration (EDR series only)
- remote configuration of Everfocus network cameras and video servers
- PTZ joystick control
- POS module for retail applications (optional)
- GPS module for object tracking (optional)
- network alarm reception and management
- multi-monitor support (depending on PC configuration)
- advanced access rights management with individual user rights for functions and system access
- network monitor for visualisation of network traffic
- system checker: integrated background port checker with alarm function for availability of DVRs, cameras and video servers in network
- support of external program starts
- basic feature support for browser-based 3rd party applications

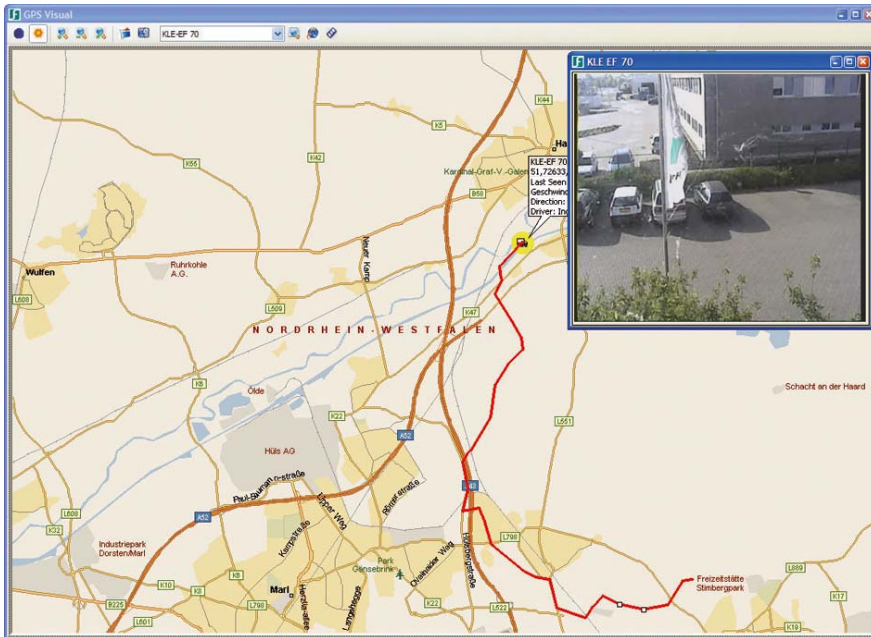


Multiview function enables display of up to 256 cameras from up to 16 different DVRs

PTZ functionality for speed dome and further PTZ cameras during remote viewing



Mapview function: integration of freely scalable maps / graphics (BMP or JPG format) to visualise locations and maps

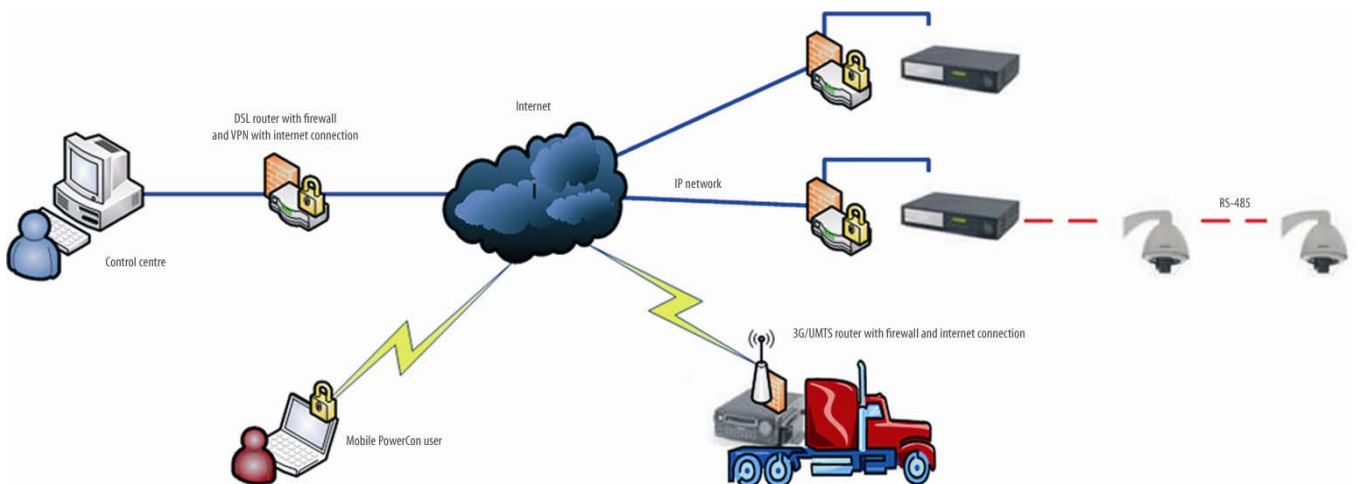


GPS module:

Utilizing a wireless router (e.g. 3G / UMTS / GPRS) together with the mobile DVR, the vehicle's GPS data can periodically be sent through the internet.

The received GPS data are indicated on the PowerCon-supported interactive map (e.g. Microsoft MapPoint) and allow for continuous automatic vehicle location.

WAN IP solution including vehicle access

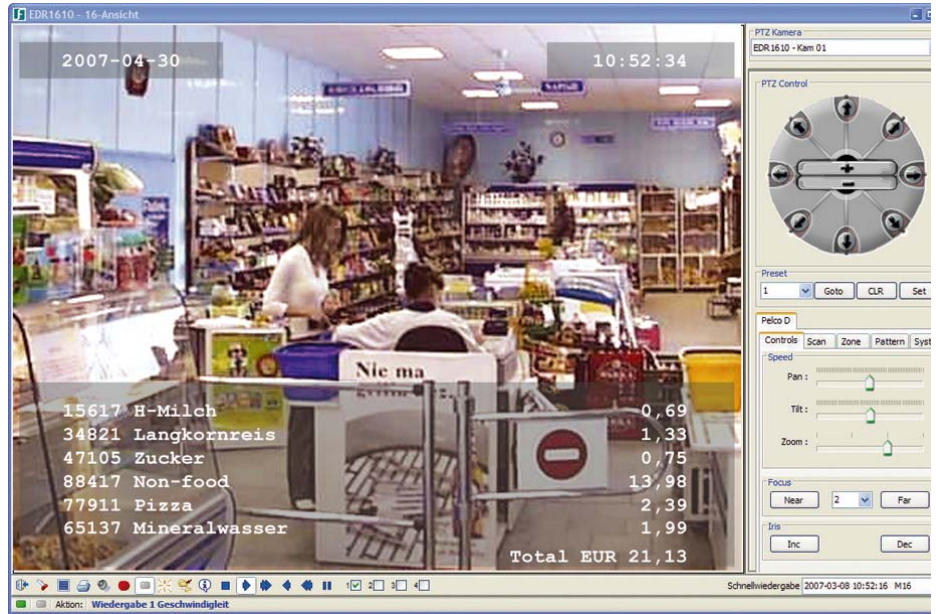


POS module:

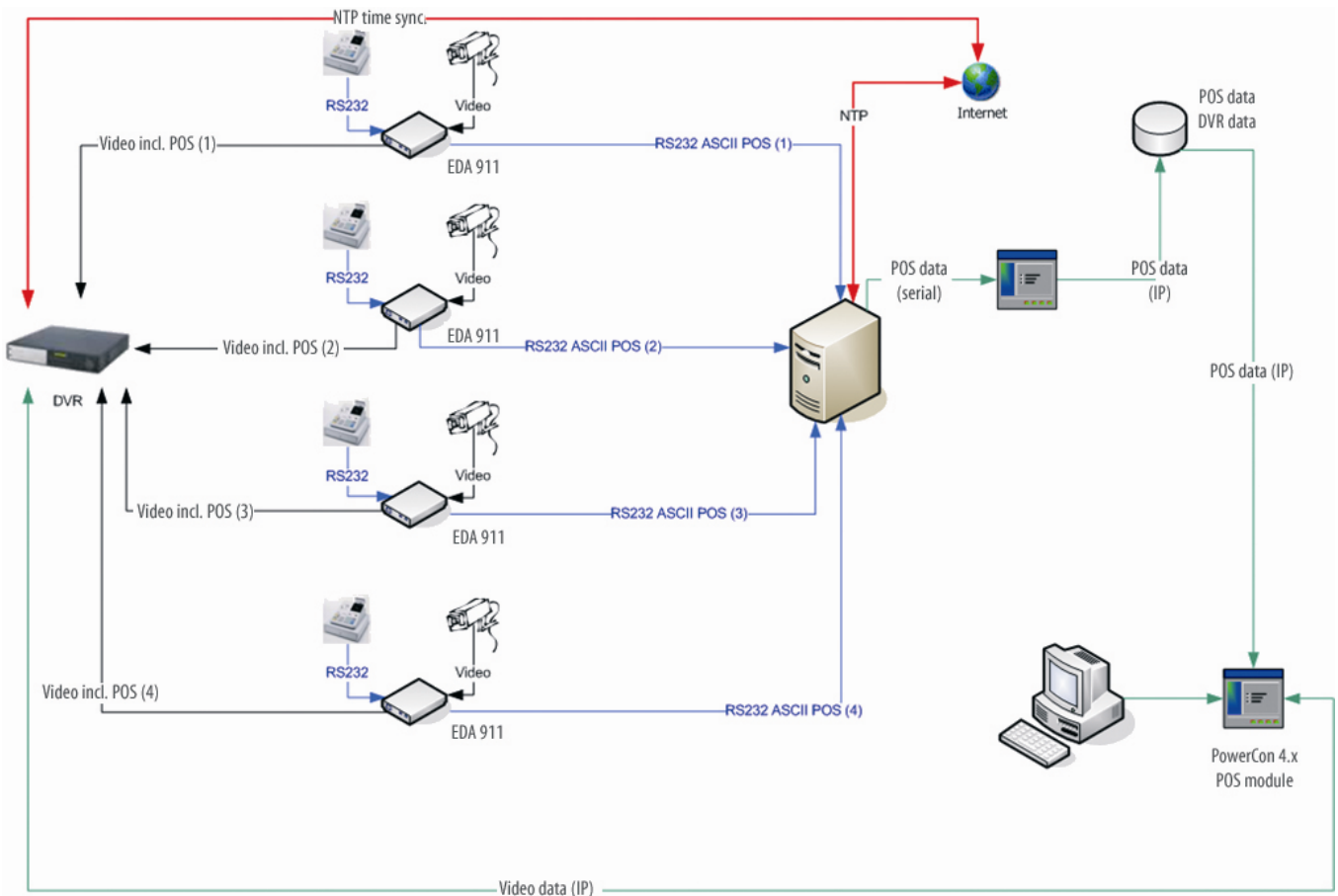
By means of the graphical text display (EDA 911, optional), featuring all relevant till protocols, POS data are captured together with related video data and recorded in the digital video recorder.

Recorded data can be evaluated on a common PC with PowerCon 4.x software.

The PowerCon Analyzer offers numerous search functions, e.g. date / time, cashier, value or keyword search, and instantly provides the associated playback video.



POS solution with 4 POS terminals, graphical text display EDA 911 and PowerCon POS module



EPS4000_db_en_rev00