



ECZ 230 – 1/3" day / night camera with IR-LED

Specifications

Sensor: 1/3" SONY CCD
Picture element: 500 x 582 (PAL)
Horizontal resolution: 380 TV lines
Sensitivity: 0,3 lux / F = 1.2 (IR-LED off)
IR-LED: 14x, controlled by internal twilight switch
IR-LED lifetime: up to 50.000 h
IR range: 5~20m*
Video output: 1 Vp-p composite PAL
S/N ratio: over 48 dB
Gamma correction: 0,45
Synchronisation: internal
Back light compensation: yes
Auto white balance: yes
AGC: yes
Electronic shutter: 1:50 ~ 1:100.000
Lens: f=4,3mm / F2, M12 x P0,5
Mounting: 1/4" mounting hole at lower and upper side for camera bracket (included)

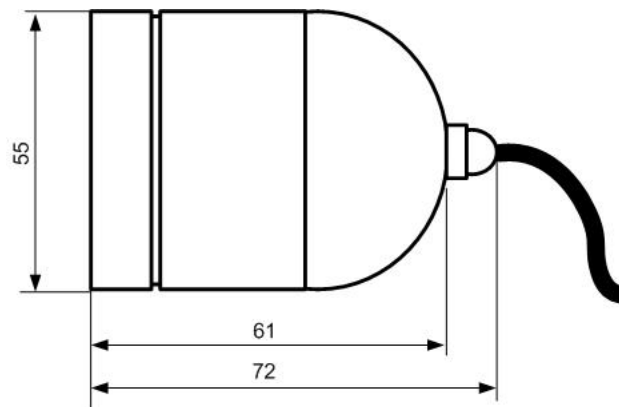
Casing: aluminium
Weatherproof rating: IP 66

Power source: 12 V DC +/- 10%
Power consumption: 6W max.

Ambient temperature: -10°C ~ +50°C
Dimensions: 55 (diam.) x 72 (D) mm (without sunshield)
 62 (W) x 58,5 (H) x 82 (D) mm (with sunshield)

Weight: 245 g

- The IR illumination range depends on the location, particularly with regard to the reflections of the installation's surroundings. Locating the device near to highly absorbent surfaces can result in a significantly reduced range.



ECZ230_db_en_rev01