

Brackets

BA 17 – bracket



Material: steel / aluminium, grey metallic
Length: 150mm
Max. load: 3 kg

BA 14 / BA 11 – bracket



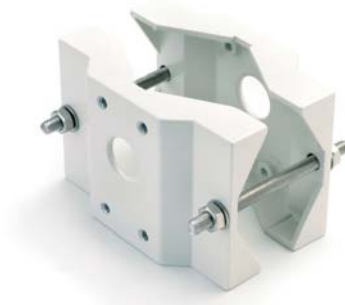
Material: zink diecasted, silver colour
Length: BA 14: 165mm / BA 11: 95mm
Max. load: 3 kg

BA 01 / BA 01 L – bracket



Material: zink diecasted, powder-coated beige, mounting plate plastic
Length: BA 01: 95mm, BA 01 L: 150mm
Max. load: 3 kg

BA 15 –pole mount adaptor WSFP



Pole diameter: 65 – 110mm
Material: cast aluminium, stainless steel
Application: with BA 09, BA 12, BA PTAC

BA 12 – bracket WBOV



Material: aluminium, RAL 9002
Length: 266mm
Max. load: 25 kg
Application: with FH 7156 H/B and FH 7161 / B

BA 09 –bracket WBM



Material: aluminium, RAL 9002
Length: 226mm
Max. load: 25 kg
Application: with FH 7154 H, FH 7156 H/B, FH 7160 and FH 7161 / B