



EURODIAL 2000

monitoring software

Eurodial 2000

Eurodial 2000 (ED2000) is a Windows 95-based software package for PC comms. from a central location to multiple Europlex control systems, such as Midiplex, Apex, Verifier and 3GS. ED2000 also operates on Windows NT and 98 platforms.

ED2000 is the successor to the widely-used Eurodial 3 (ED3). ED2000 contains all the features of ED3, with significant enhancements.

Within the Windows environment, ED2000 has been developed to work over a range of PSTN, ISDN, Fibre Optic Cable and X.25 Networks.

A significant improvement on ED3 is the ability of ED2000 to handle serial port communications with two separate alarm sites simultaneously. The PC operator monitors the two sites from one PC, receiving detailed real-time information on both.

Hardware Requirements

The complete ED2000 system consists of:

- 3GS or Apex panel with DM1200 or modem.
- 2 Hayes-compatible modems at PC end.
- RS232 cable to COM1 or COM 2 of the PC.
- A coded dongle for LPT1 of PC.

PC serial ports can be configured for connection to a modem or for direct connection to the alarm panel. Both options are set within ED2000 itself.

Euromaps

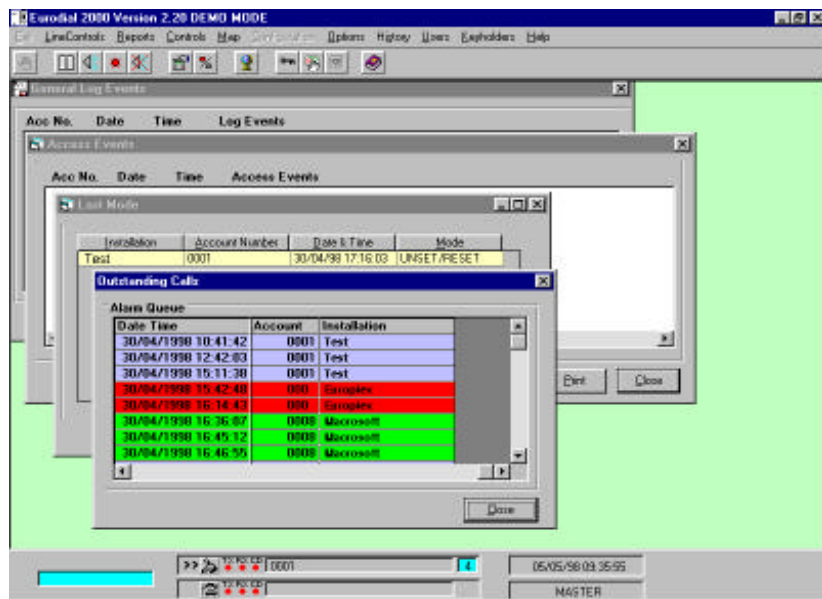


As with ED3, ED2000 allows the user to define colour site plans for each Europlex alarm installation. The

Euromaps system allocates 1 master map and 26 sub-maps to each panel. Each zone within the alarm area is represented by an icon. In the case of an alarm activation on site, ED2000 will automatically display the appropriate site plan on screen, identifying the exact location and type of detector activated.

ED2000 Features

ED2000 is designed to monitor and manage



every aspect of panel activity, as well as providing additional facilities to the PC operator. There are General, Panel, Last Mode and Access Event logs, giving printable reports of ED2000 system (all panels) and current line (current panel) activity. The logs will detail last user, status of panel when last checked (fully set, unset, etc.), and access control card IDs and numbers entered at the panel.

The Zone and Output Reporting features will give printed reports of the description and status of currently enabled zones and outputs, and a separate report details the number and status of disabled or inhibited zones within the system.

All system data (configuration, logs. etc.) are stored in MS Access databases, which can be saved and downloaded as required.

Alarm Queueing

With ED2000 running, the operator gets an immediate indication of an alarm activation, visually (flashing icons) and audibly. During initial setup, the operator can key in keyholder information for each installation, so that contact details are available on screen for each alarm activation. The alarm call is queued on the system in the Outstanding Calls window until dealt with. Here the operator is given complete information on the call: time, date and location of activation, the most recent system users and the system events immediately preceding the call. Each call is given a pre-set colour-coded priority, based on the channels used to communicate the event and the outputs tripped.

ED2000

EURODIAL 2000

monitoring software



On-screen keypad

The Panel Keypad option gives the operator a virtual keypad on-screen with full control and functionality. Codes, menu options and values are entered using keyboard keys.



Translation Utility



ED2000 comes complete with a Translation Utility, which enables the user to localise ED2000 software for use in other countries. The utility presents the files containing the software text strings ready for translation. Once the relevant strings have been localised and the files saved, the utility automatically updates the application using the newly-translated text.

Flexihelp



The ED2000 Flexihelp utility is a simple database that allows the operator to view and maintain the default Help topics. The operator is able to edit each Help file, and so customise it for individual needs, or localise it for other languages.

PC specification

- Windows 95, 98, NT or 3.x
- Stand-alone or multi-user networked solution
- Minimum : 486 DX 66 with 8 Mb RAM
- Optimum : Pentium 100Mhz with 16Mb RAM
- 2 free serial ports
- ED2000 supports sound cards, but these are not essential for the operation of the system.

How to order:

Product	Code
Eurodial 2000 Complete	5505V2

Europlex Technologies Sales and Service

Europlex Technologies [Ireland] Ltd .
Clonshaugh Industrial Estate, Clonshaugh, Dublin 17, Ireland.
Tel: +353 - 1 - 8485111 Fax: +353 - 1 - 8485147 e-mail: info@europlex.ie

Europlex Technologies [USA] Inc .
Suite 106, 1700 Enterprise Way, SE Marietta, GA 30067, USA
Tel: +1 - 770 - 818 - 0456 Fax: +1 - 770 - 818 - 0239 e-mail: sales@europlex.com

Europlex Technologies [Canada] Inc .
Unit 6, 70 Dynamic Drive, Scarborough, Ontario, M1V 2N2, Canada.
Tel: +1 - 416 - 7544313 Fax: +1 - 416 - 7548992 e-mail: eplexcan@interlog.com

Europlex Technologies [UK] Ltd.
Unit 11, Malmesbury Business Park, Malmesbury SN16 9JU, Wiltshire, England.
Tel: +44 - 1666 - 825430 Fax: +44 - 1666 - 824423 e-mail: europlex_uk@msn.com