

# Camera Housings

**ernitec**

## Series CHM & CHN

Ernitec Series CHM and CHN camera housings are particularly suited for use with today's smaller CCTV cameras.

Manufactured from high quality extruded, anodised aluminium, with reinforced thermoplastic end caps, the camera housings are IP67 rated and will enhance the appearance of CCTV installations, whilst giving a high degree of protection to the camera and lens.

Available in 3 lengths, CHM and CHN housings can be supplied with integral and optional

heater/demisters, power supplies and transmitters to send video signals over twisted pair or fibre cables.

Installation and service is simple. Clever grooves, which are part of the extrusion, allow the mounting plate to sit on top of the housing, giving easy all-round access.

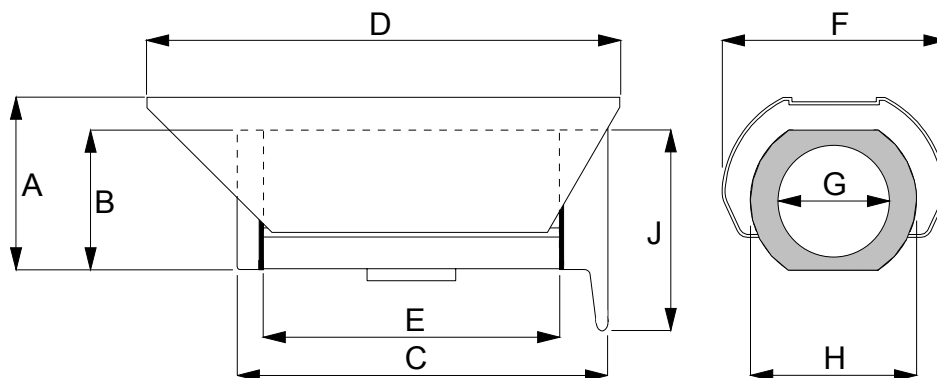
The camera housings are available in top or bottom mounted versions, the bottom mounted version can further more be equipped with a sun shield which emphasizes the aesthetic appearance.



# Specifications

Type excl. sunshield	CHM-200	CHM-250	CHM-250T	CHM-300	CHN-250	CHN-350	CHN-450
<b>Outside dimensions (mm)</b>							
<b>A</b>	116	116	-	116	156	156	156
<b>B</b>	99	99	99	99	131	131	131
<b>C</b>	250	300	300	350	300	400	500
<b>D</b>	307	357	-	407	412	512	612
<b>D (Long sunshield)</b>	430	480	-	530	493	593	693
<b>F</b>	148	148	-	148	186	186	186
<b>G</b>	64	64	64	64	90	90	90
<b>H</b>	117	117	117	117	145	145	145
<b>J</b>	141	141	141	141	171	171	171
<b>Inside dimensions (mm)</b>							
Length (E)	200	250	250	300	250	350	450
Width	80	80	80	80	94	94	94
Height	73	73	73	73	96	96	96
<b>Weight (kg)</b>	1.86**	2.15**	1.54	2.38**	3.76**	4.40**	5.15**
<b>Note</b>			Top mount				
<b>Type incl. sunshield</b>	CHM-200M	CHM-250M	N/A	CHM-300M	CHN-250M	CHN-350M	CHN-450M

\*\* Sunshield included



**Denmark Head Office**  
Ernitec A/S  
Hørkær 24  
2730 Herlev  
Denmark  
Phone: +45 44 50 33 00  
Fax: +45 44 50 33 33  
ernitec@ernitec.dk  
www.ernitec.com

**French Branch Office**  
Ernitec France  
N° 29 Parc Club du  
Millenaire  
1025 Rue Henri Becquerel  
34036 Montpellier cedex 1  
France  
Phone: 04 67 15 10 15  
Fax: 04 67 64 01 81  
ernitec@ernitec.fr  
www.ernitec.com

**German Branch Office**  
Ernitec GmbH  
Stormarnring 28  
22145 Stapelfeld  
Germany  
Phone: 040 67 56 25 0  
Fax: 040 67 56 25 25  
ernitec@aol.com  
www.ernitec.com

**UK Branch Office**  
Ernitec UK  
Columbia House  
Columbia Drive  
Worthing  
West Sussex BN13 3HD  
England  
Phone: 01903 26 31 25  
Fax: 01903 26 31 26  
sally@ernitec.co.uk  
www.ernitec.com

**Middle East Office**  
Ernitec ME  
Hamra - Makdesi Street  
Younis Center - 5th floor  
Office no. 503  
P.O.Box: 113/5721  
Beirut  
Lebanon  
Phone: +961 1 751 796  
Fax: +961 1 751 795  
malek\_kabrit@ernitecme.com  
www.ernitecme.com