

VTL-WWD

Home | Security | Housings | for Boxed Cameras

VTL-WWD
Weatherproof Housing (300mm) RAL9002, Wallbracket,
Thermostat, Heater 12-24V

Art-Nr. 79644



Main Features

Camera Weatherprotection	Cable Entry Through the Wall Bracket
Integrated Wall Bracket	PTC Screen Heater 12-24V
Fold-down Housing Body	Protection Rating IP66
Insulated Camera Mounting	Housing Surface RAL9002
Max. Installation Length 300mm	

Specifications

Series	eneo VTL
Maximum installation length	300
Clear Shield	no
Window heater	yes, 12~24V/20watts (PTC)
Blower	optional
Wiper	no
Supply voltage	12~24V
Sunshield	yes
Hidden cable management	yes
Cable entry	Through the wall bracket
Integrated wall mount	yes
Protection rating	IP66
Housing	Outdoor
Housing material	Aluminium

VTL-WWD

(Continuation Specifications)

Colour (housing)	RAL9002
Dimensions (HxWxD)	See drawing
Weight	4.0kg

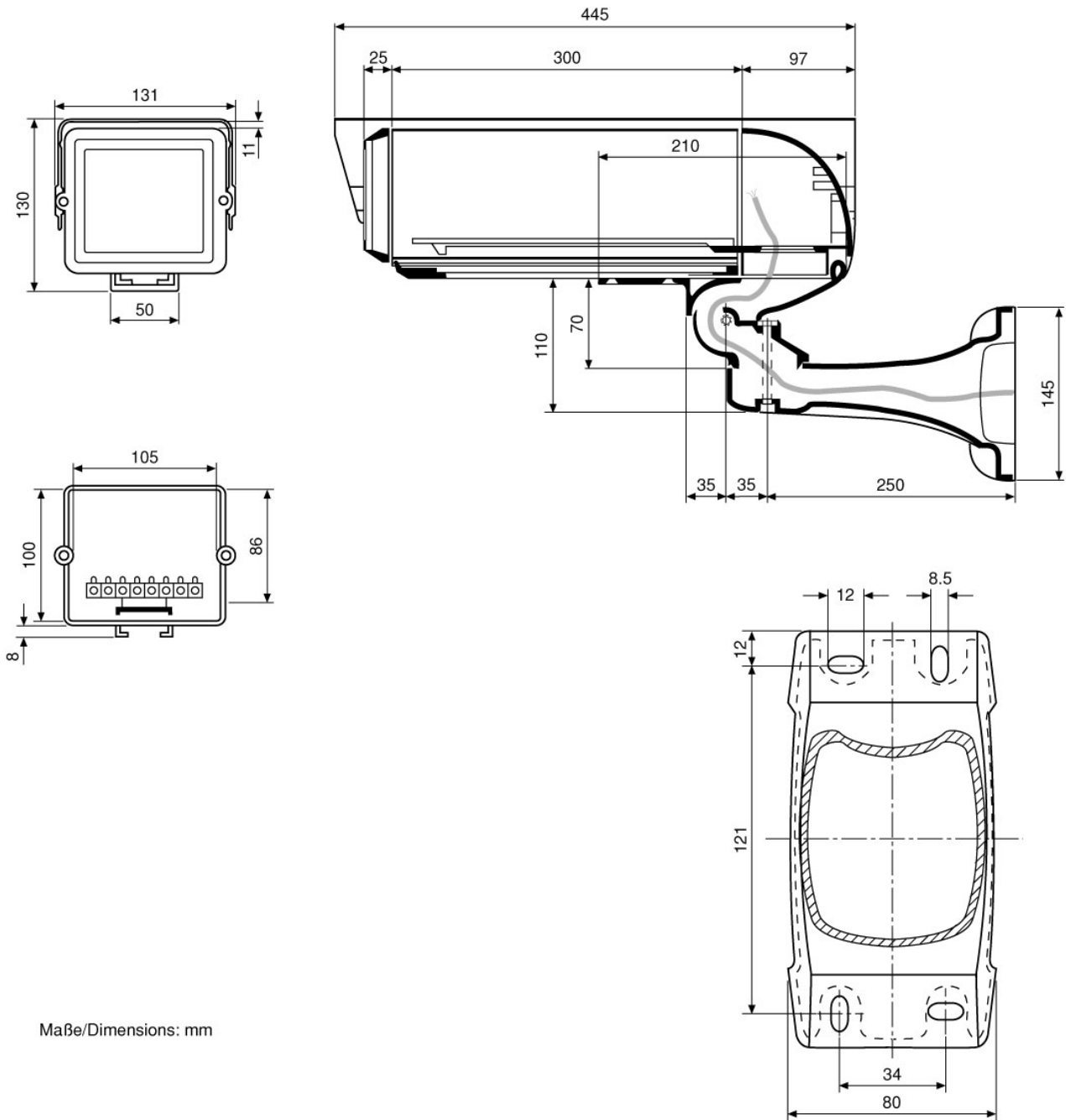
Optional accessories

70457	AK-3	Camera Connection box, 230VAC Input, 24VAC-3.2A, 12VDC-1A Outputs
79593	PM-6D	Pole Mount Adapter for 2 Wall Mounts, (50-140mm Pole), RAL9002
79592	PM-6S	Pole Mount Adapter for 1 Wall Mount, (50-140mm Pole), RAL9002
79613	CMA-2	Corner Mount Adapter for Wall Brackets WD-5, WD-7, VTL-WW, VHK-WW, RAL9002

VTL-WWD

Home | Security | Housings | for Boxed Cameras

Technical drawing



Maße/Dimensions: mm