

VTL-300/WW-POEB

Home | Security | IP Cameras | Accessories

VTL-300/WW-POEB
Weatherproof Housing, 300mm, Wall Bracket, Heater,
Fan, 12V, RJ-45, PoE

Art-Nr. 79705



Main Features

Network camera weatherprotection	Integrated wall bracket
Humidity protected cable feed-through	Cable entry through the wall bracket
Integrated PoE splitter (12VDC/1.75A resilient)	Thermostatically controlled window heater & blower
Fold-down housing body	Protection rating: IP54
Insulated camera mounting	Colour: RAL9002
Housing body length: 300mm	Accessory: PoE injector

Specifications

Series	eneo VTL
Maximum installation length	240
Housing length (L)	300mm
Max. camera size (LxWxH)	240x105x86mm
Clear Shield	no
Window heater	yes, 12V / 7W (PTC)
Blower	yes, 12V / 1W (PTC)
Wiper	no
Supply voltage	PoE
Power over Ethernet	Built-in HiPoE Splitter with internal wiring
Sunshield	yes
Hidden cable management	yes
Cable entry	Through the wall bracket

VTL-300/WW-POEB

(Continuation Specifications)

Cable connection	RJ-45
Integrated wall mount	yes
Protection rating	IP54
Housing	outdoor
Housing material	aluminium
Colour (housing)	RAL9002
Temperature range	-20°C ~+50°C
Dimensions (HxWxD)	see drawing
Weight	4.0kg
Remarks	The specified temperature range refers to the housing only. The usable temperature range for the entire combination, indoors and outdoors, depends strongly on the expected ambient temperature and the type of camera used.
Certificates	CE

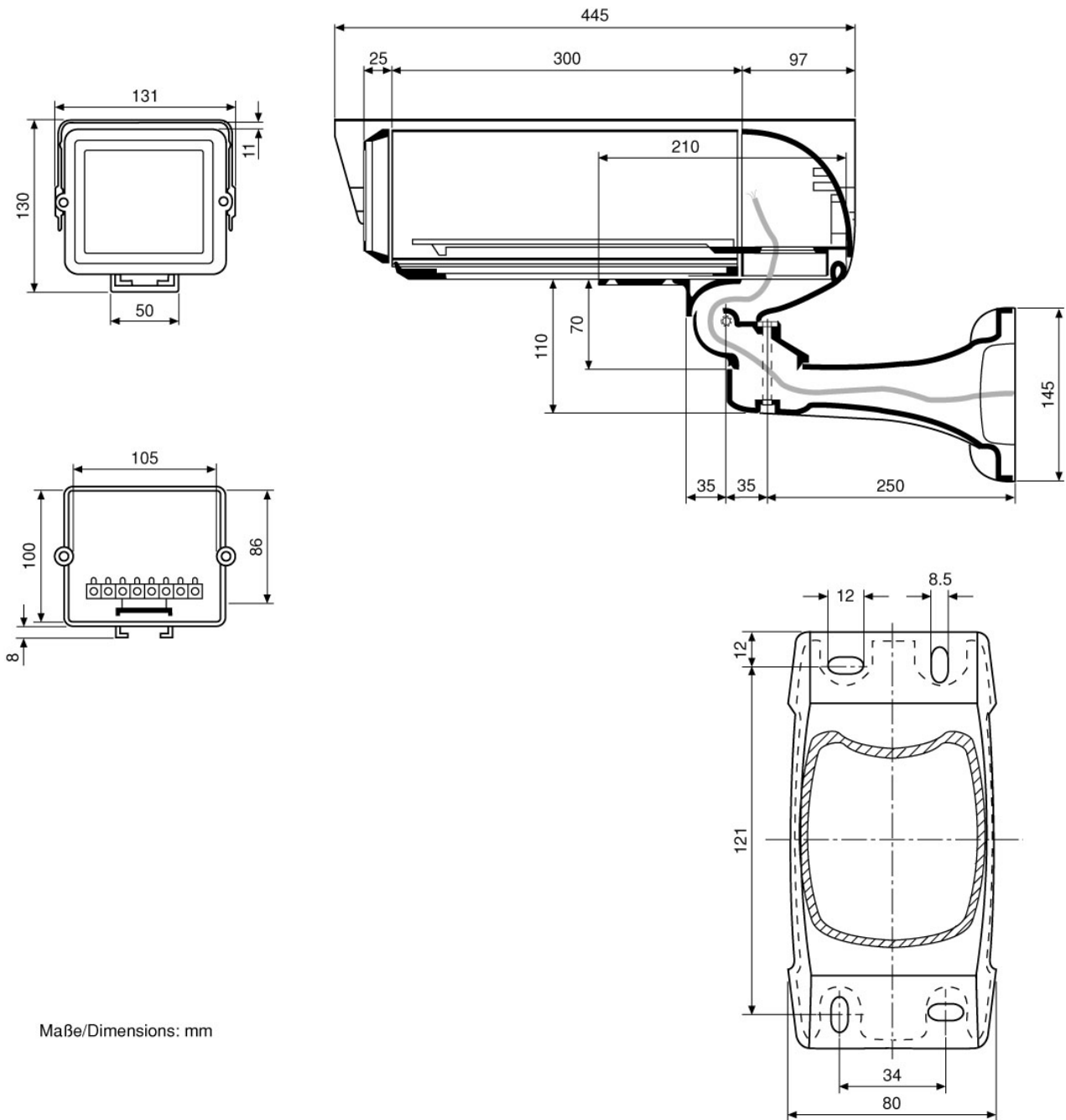
Optional accessories

79592	PM-6S	Pole Mount Adapter for 1 Wall Mount, (50-140mm Pole), RAL9002
79707	POE INJECTOR-01	Single Channel PoE Injector, 230VAC
79613	CMA-2	Corner Mount Adapter for Wall Brackets WD-5, WD-7, VTL-WW, VHK-WW, RAL9002
79593	PM-6D	Pole Mount Adapter for 2 Wall Mounts, (50-140mm Pole), RAL9002

VTL-300/WW-POEB

Home | Security | IP Cameras | Accessories

Technical drawing



Maße/Dimensions: mm