



Covert & Fixed Dome Cameras

FDP-No.: 91841

VKCD-146/VAR36

- For Drop Ceiling or Wall Mount
- Clear bubble with Inner Liner
- Resolution of 480 Horizontal Lines
- Sensitivity of 2,0 Lux (F1.3)
- Built-in Lens F2.0/3-6 mm
- Digital Signal Processing (DSP)
- Automatic Shutter Control (AES)
- Automatic White Balance (ATW)
- Backlight Compensation (BLC)
- Easy Installation
- Supply Voltage: 12 VDC
-



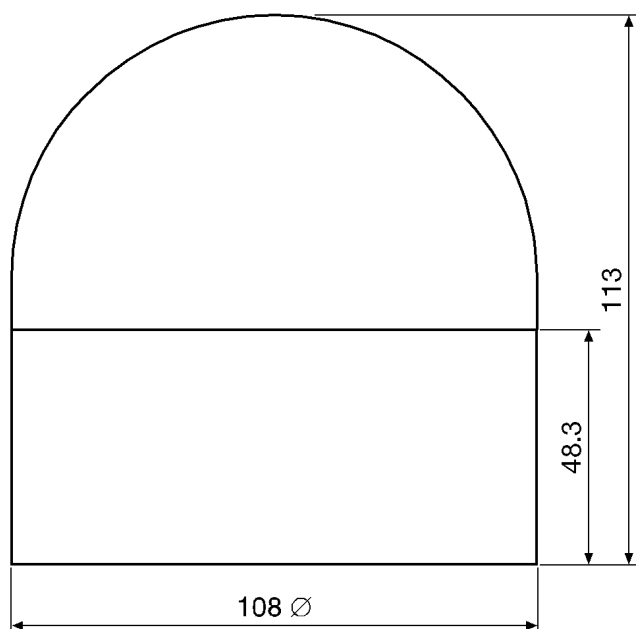
Specifications:

Imager	1/4" Interline transfer CCD
System	CCIR/PAL
Synchronization	Internal
Sensitivity at 50% video signal	2.0 Lux at F1.3 (VT measurement result)
Horizontal resolution	480 TV lines
Signal-to-noise ratio	48 dB (AGC OFF)
Automatic shutter control (AES)	1/50 to 1/100,000 sec.
Automatic gain control (AGC)	28 dB, ON/OFF switchable
White balance (ATW)	Automatic (2500 to 8000 °K)
Backlight compensation (BLC)	ON/OFF switchable, Center weighted
Video output	1 Vp-p, CCVS, 75 Ohm
Lens	F1.3/3-6 mm (M9x0.5)
Supply voltage	12 VDC (+/-20%)
Power consumption	1.8 W max.
Mounting	Drop ceiling or wall mount
External connections	Video (BNC), 12 VDC (DC socket)
Horizontal turning range	110° (+/-55°)
Vertical turning range	80° (10° to 90°, ceiling as reference)
Temperature range	-10°C to +50°C

VKCD-146/VAR36

Housing	Plastic with clear bubble and black inner liner
Colour	Black
Dimension (HxD)	See drawing
Weight	Approx. 310 g

Accessories	
EDP No. / Type	Description
70443 VT-PS12DC-4	Power supply unit 230 VAC/12 VDC stabilized with DC plug
77779 VT-PS12DC/UK	Power supply unit 230VAC/12VDC-500mA w. UK mains connector



Maße/Dimensions: mm

e-mail: info@eneo-security.com • www.eneo-security.com