

Video Security



VKCD-1315FM/VF

1/3" Day&Night Dome Camera, In-ceiling
F1.2/3.8-9.5mm, Removable IR CF, 480TVL

Art-No. 92057



Features

For Wall and In-ceiling Mount / Tinted Bubble
Vandal and Tamper-Resistant
1/3" Progressive Scan CCD Sensor (D&N Camera)
Removable IR Cut Filter
Integrated F1.2/3.8-9.5mm Varifocal Lens, DC Iris
Resolution of 480 Horizontal Lines

Wide Dynamic Function (WDR)
On-screen Menu Control / Camera Title Display
Back Light Compensation (BLC)
Automatic White Balance (AWB)
Manual 3-axis Camera Adjustment
For Easy Indoor and Outdoor Installation (IP65)

Specifications

Wide dynamic range	On/Off switchable
System	CCIR/PAL
Imager	1/3" Sony Progressive Scan CCD
Active picture elements	Ca. 440.000, (H) 752 x (V) 582 Pixels
Horizontal resolution	480 TV lines
Sensitivity at 50% video signal	0.56 Lux (colour, AGC High, DSS Off). 0.03Lux (b&w with 10x integration), at F1. 2 each (VT measurement result including bubble)
Signal-to-noise ratio	50dB (B&W, AGC OFF)
Gamma correction	Approx. 0.45
Synchronization	Internal
Automatic shutter (AES)	1/50 ~ 1/10,000Sec.
Low speed shutter (DSS)	DSS: OFF / 2 ~ 20FLD / 40FLD / 80FLD / 160FLD Mode
Flickerless function	On/Off switchable
Automatic gain control (AGC)	OFF/LOW/MID/HIGH selectable
Backlight compensation (BLC)	On/Off switchable
Aperture Correction (APC)	Horizontal and vertical
Day / Night Switching	Automatic/Day/Night

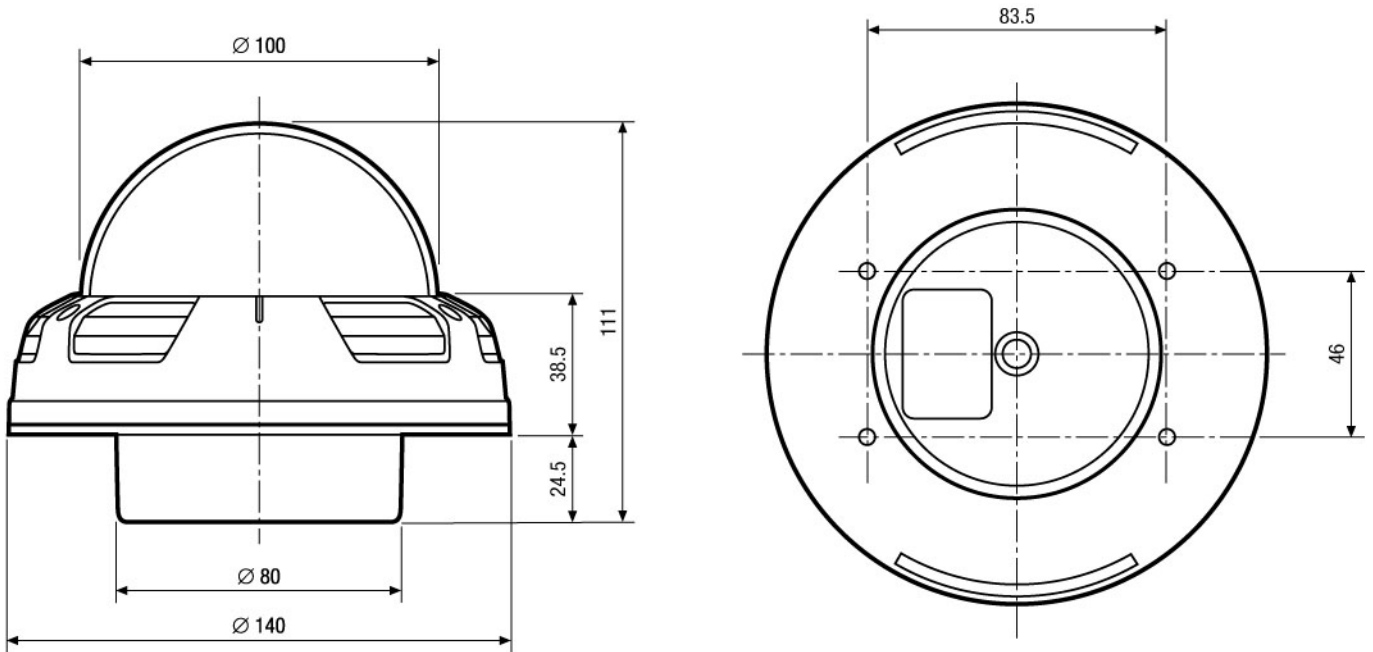
VKCD-1315FM/VF

(Specifications continued)

White balance (AWB)	2500 ~ 9500K, Automatic/Hold/User selectable
Privacy Zones	4 Areas, Masking, X/Y start/end
IR cut filter	Removable IR cut filter with adjustable delay time
OSD function control	Main menu: Camera-ID no., Camera title/text, Colour/B&W switching, Sharpness, Mirror function, Positive/Negative switching. AWB: White balance red/blue, automatic. AE: Brightness, Flickerless, High speed shutter, Low speed shutter (DSS), AGC, Brightness. Day&Night modes (Auto, Day, Night, external), IR Filter (delay). WDR: Mode, BLC. Privacy Zones: Area, Masking, X/Y start/end. Display: OSD, Function display ON/OFF. Initial: Camera settings ON/OFF
Lens	F1.2/F2.0~360 / 3.8~9.5mm with galvanometer controlled iris
Focus range	0.15m ~ ∞
Horizontal angle of view	74.2° ~ 30°
Video output	1Vp-p, (C)VBS, 75ohms
Serial port	RS-485 (control S/W, interface protocols: Pelco D and upon request)
Supply voltage	12VDC (9 ~ 15VDC), 12VDC ±0,5V recommended
Power consumption	6.0watts max.
Camera adjustment	3-axis camera adjustment: 360° horizontal rotation / +-45° tilt rotation, 360° pan rotation
Housing	Die-cast aluminium with tinted polycarbonate bubble
Bubble	100mm diameter, Vandal resistant 3mm -tinted-polycarbonate with high resistance
Protection rating	IP65 (at installation according to the manual)
Temperature range	-10°C ~ +50°C
Cable connection	Video (BNC), 12VDC (DC jack), RS-485 (2-pin terminal)
Dimensions (HxWxD)	See drawing
Weight	630g
Parts supplied	Mounting screw kit, Torx wrench key, Service monitor cable (Cinch plug), Guide pattern, Manual

Accessories

77779 / VT-PS12DC-UK	Power Supply Unit w. UK Mains plug-in, 100-240VAC/12VDC-1.0A, Regul., open Ends
70447 / VT-PS12DC-5	Plug-in Power Supply Unit 100-240VAC 12VDC (1.0Amp), Regulated, with DC Plug
73844 / FW7362/12	Plugable AC/DC Adapter 100-240V/12VDC-2.5A, Regulated



Maße/Dimensions: mm

VIDEOR TECHNICAL E. Hartig GmbH
 Carl-Zeiss-Straße 8 · 63322 Rödermark · Germany
 Telefon +49 (0) 60 74/8 88-0 · Telefax +49 (0) 60 74/8 88-100
 info@videortechnical.com · www.videortechnical.com

