

Video Security

Cameras | Board Cameras

VKC-1352

1/3" Day&Night Board Camera with Lens
F2.0/3.8mm, 12VDC, 550TVL

Art-No. 92095



Features

CCD Board Camera with Lens F2.0/3.8mm
1/3" Super HAD CCD
Resolution of 550 Horizontal Lines
Sensitivity of 0.35Lux (at F1.2 & Colour)
Removable IR Cut Filter
Digital Signal Processing (DSP)

Electronic Shutter Control (ESC)
Automatic Gain Control (AGC)
Backlight Compensation (BLC)
Automatic White Balance (AWB)
Supply Voltage 12VDC
Board Dimensions 38x38mm

Specifications

System	day&night
Video standard	CCIR/PAL
Imager	CCD, Sony Super HAD Interline Transfer CCD
Sensor size	1/3"
Active picture elements	approx. 440,000, 752(H) x 582(V)
Synchronization	Internal
Signal-to-noise ratio	48dB
Sensitivity (at 50% video signal)	0,36Lux, at F1.2 (colour), 0.21Lux (B&W). VT measurement result
High-speed shutter (ESC)	1/50 ~ 1/100,000sec. (On/Off switchable)
Integration rate	no
Automatic gain control (AGC)	On/Off switchable
Backlight compensation	BLC, On/Off switchable
White balance (AWB)	Automatic
IR cut filter	yes, Motorized, switchable filter. Automatic function (CDS controlled) or manual. In removed filter position, the colour signal will, be switched OFF
Flickerless function	1/120sec. On/Off switchable

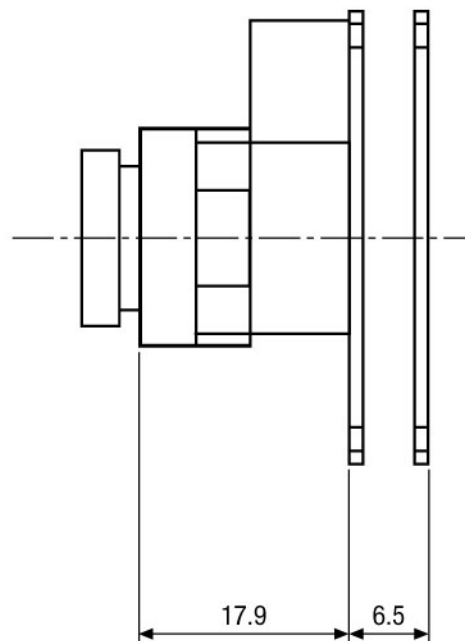
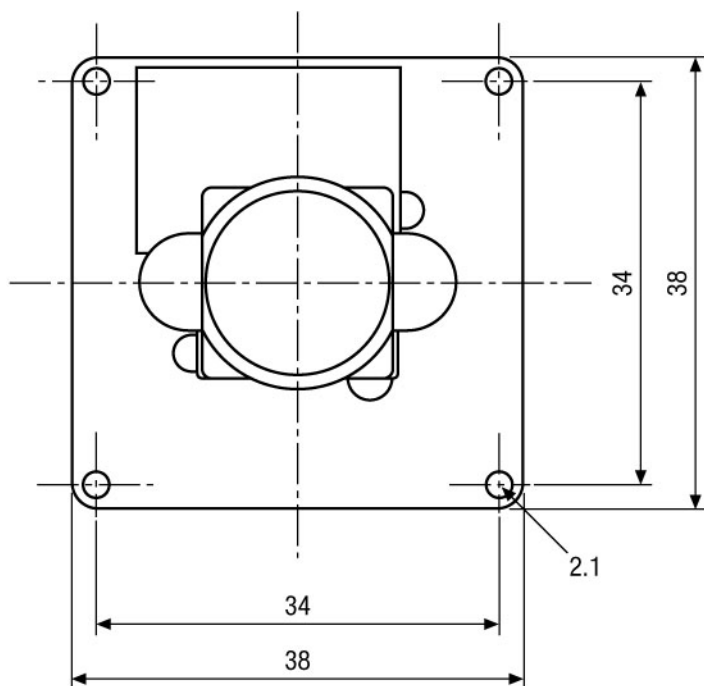
VKC-1352

(Specifications continued)

Mount	n/a
Lens	F2,0 / 3.8mm with fixed focus
Application range	security
Nominal format size	1/3"
Aspherical technology	no
Focal length	3,8mm
Horizontal angle of view	65°
Iris control	no
Lens mount	integrated lens
Internal adjustments	AGC, BLC, ESC, Flickerless, DC-Iris level
External connections	Video, 12VDC (Molex socket)
Video outputs (type)	CVBS, VBS
Video outputs	1Vp-p, CVBS, 75ohms
Serial interfaces	no
Supply voltage	12VDC, (9 ~ 15VDC), 12VDC ±0,5V recommended
Power consumption	2.1watts max.
Temperature range (Operation)	-10° ~ +50°C
Mounting	2 Fixing holes at 48mm distance (diagonal)
Housing	-
Dimensions (HxWxD)	See drawing
Weight	Approx. 35g

Accessories

70447 / VT-PS12DC-5	Plug-in Power Supply Unit 100-240VAC 12VDC (1.0Amp), Regulated, with DC Plug
77773 / VT-PS12DCDT1	PSU 12VDC/1.0A, Regulated, Desktop Version, 1.8m Cables each w. open ends



Maße/Dimensions: mm

VIDEOR TECHNICAL E. Hartig GmbH
 Carl-Zeiss-Straße 8 · 63322 Rödermark · Germany
 Telefon +49 (0) 60 74/8 88-0 · Telefax +49 (0) 60 74/8 88-100
 info@videortechnical.com · www.videortechnical.com