



VHM/ZLA-W

Article-No.: 79681

Weatherproof Housing (330mm),
Heater, 230V Heater, Central P
lug, RAL9016/7035

Main features

Camera weather protection
Fold-down housing body
Insulated camera mounting
Cable entry with metal gland M25x1.5mm
Window glass with "Clear-Shield" technology

Housing body length: 330mm
4 levels of camera height adjustment
Central connector with 30 pin contact strip
PTC window heater 100-265V included
Protection rating: IP66






Specifications

Series	eneo VHM
Maximum installation length	330
Space for power supply	NE-112 (12VDC or 24VAC): 85mm; NE-112/2 (12VDC/24VAC): 110mm
Window screen	coated with "Clear Shield" technology, with this technology the glass corrosion, caused by environmental pollution, is avoided and screen cleaning cycles will be extended; the coating is UV light resistant, colour neutral and it causes no F-stop loss
Clear Shield	yes
Window heater	yes
Window heater	110~265VAC/9watts (PTC)
Thermostat	On: +16°C, Off: +20°C (see screw terminal board no. 79609)
Blower	no
Wiper	no
Supply voltage	100~240VAC
Sunshield	yes
Hidden cable management	no

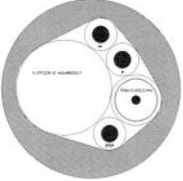

Specifications (continued)

Cable entry	Metal gland M25x1.5mm (for cable diameter 9-17mm)
Cable connection	Mains connection board VHM/KV1: see accessories
Integrated wall mount	no
Protection rating	IP66
Housing	outdoor
Housing material	aluminium
Housing	aluminium with plastic covers (ABS)
Colour (housing)	RAL9016, RAL7035
Temperature range	-30 to +60°C
Dimensions (HxWxD)	see drawing
Weight	2.9kg
Parts supplied	Screw set, Central plug with built-in 30-pin connector
Certificates	CE

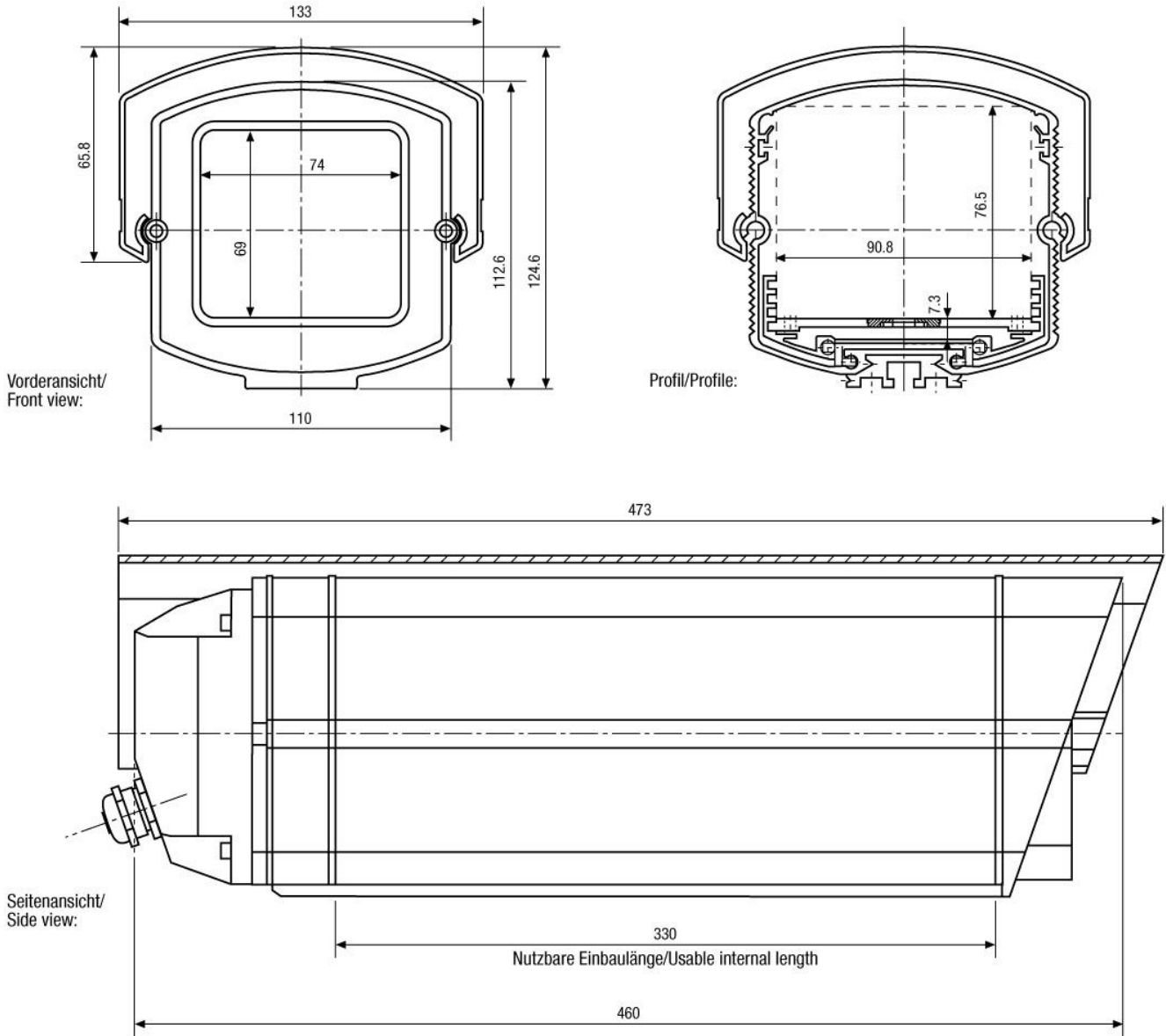
Optional Accessories

Image	Artikel-Nr. / Typ	Description
	WD-16/MK-W	Wall Mount with Swivel Head for VHM Weatherproof Housings, RAL9016
	VHM/KV1	Cable Connection Board with Thermostat for VHM/Z Housing
	NE-112/AC24V	Power Supply Unit 230VAC/24VAC (600mA) for VHM Housing
	NE-112	Power Supply Unit 230VAC/12VDC (600mA) for VHM Housing, Regulated
	NE-112/2	Power Supply Unit 230VAC/12VDC (600mA), Regulated, 24VAC (1000mA) f. VHM Housing

Optional Accessories (continued)

Image	Artikel-Nr. / Typ	Description
	MCAB-1	Camera/PT Head Connecting Cable, for Video, Power, RS- Control, Network, 1m
	AK-3	Camera Connection box, 230VAC Input, 24VAC-3.2A, 12VDC-1A Outputs

Technical Drawing



Maße/Dimensions: mm



Your partner for eneo products:

