

VHM/STLB-W

Home | Security | Housings | for Boxed Cameras

VHM/STLB-W
Weatherproof Housing (330mm), Heater, CBD,
RAL9016/7035, 24VAC

Art-Nr. 79679



Main Features

Camera weather protection	Back part multi-pole connection
Housing body length: 330mm	3 cable entries M16x1.5mm
Fold-down housing body	PTC window heater 12-30V included
4 levels of camera height adjustment	Window glass with "Clear-Shield" technology
Insulated camera mounting	Incorporated carrier handle
Integrated connection board	Housing colour: RAL9016/RAL7035

Specifications

Series	eneo VHM
Maximum installation length	330
Space for power supply	NE-112 (1 output): 85mm; NE-112/2 (2 outputs): 110mm
Cable entries	3x M16x1.5mm
Window screen	Coated with "Clear Shield" Technology. With this technology the glass corrosion, caused by environmental pollution, is avoided and screen cleaning cycles will be extended. The coating is UV light resistant, colour neutral and it causes no F-stop loss.
Clear Shield	yes
Window heater	yes, 12~30V/9watts (PTC)
Thermostat	On: +16°C, Off: +20°C
Blower	no
Wiper	no
Supply voltage	12~30VAC/DC

VHM/STLB-W

(Continuation Spezifications)

Sunshield	yes
Hidden cable management	no
Internal connection for	Power, video, control cables
Integrated wall mount	no
Protection rating	IP66
Housing	outdoor
Housing material	aluminium
Housing	Aluminium with plastic covers (ABS)
Colour (housing)	RAL9016, RAL7035
Dimensions (HxWxD)	see drawing
Weight	2.9kg
Parts supplied	Screw set, Thermostat switch, Screw terminal

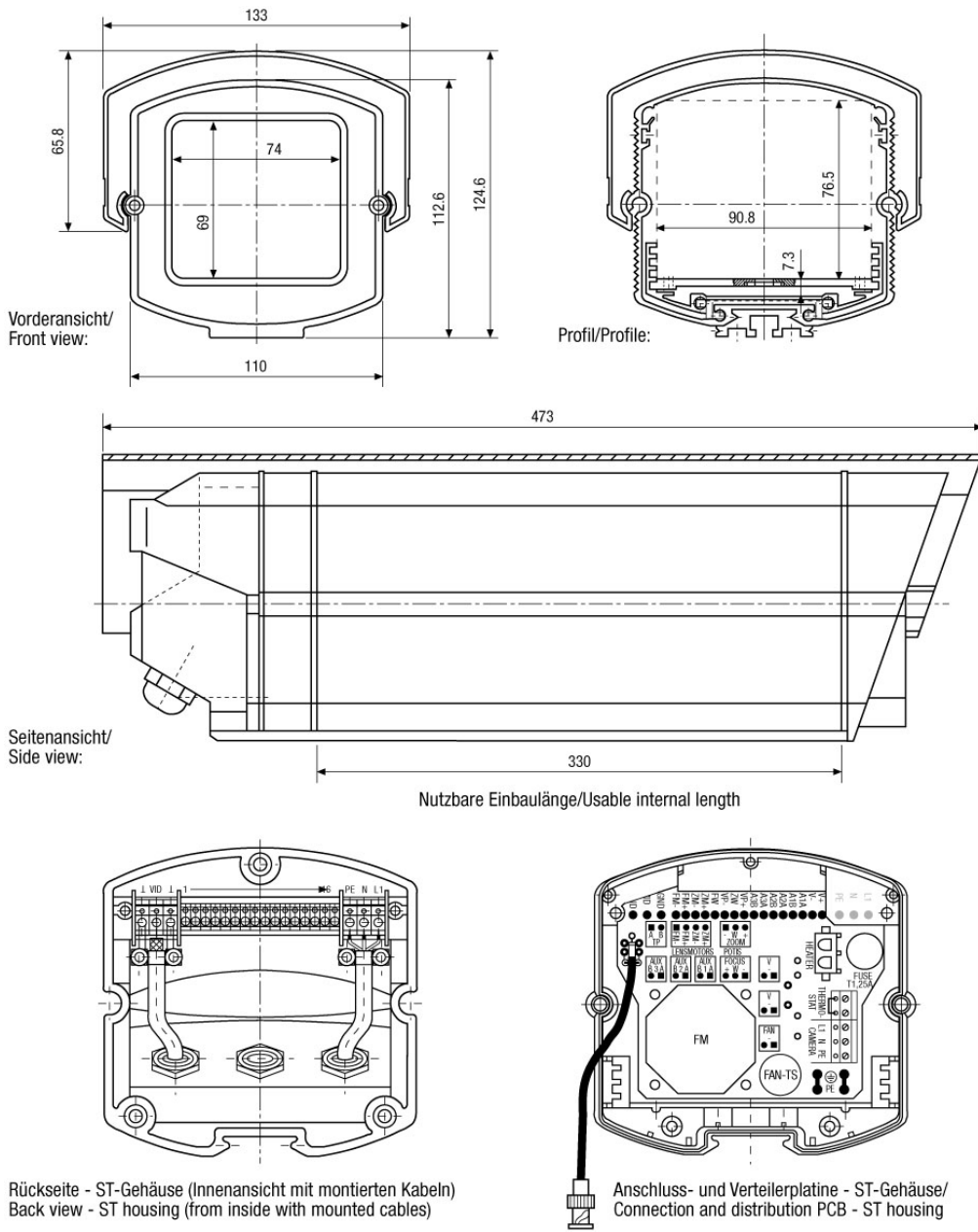
Optional accessories

73177	WD-16/MK-W	Wall Mount with Swivel Head for VHM Weatherproof Housings, RAL9016
72501	PTB-1	Protocol Translator Board, 12VDC for Build-in VHM/ST Housing Series
79696	VHM/PC-1-LG	Plug-in shield for VHM/EC&ST Housing Series, 330mm, RAL7035

VHM/STLB-W

Home | Security | Housings | for Boxed Cameras

Technical drawing



Maße/Dimensions: mm