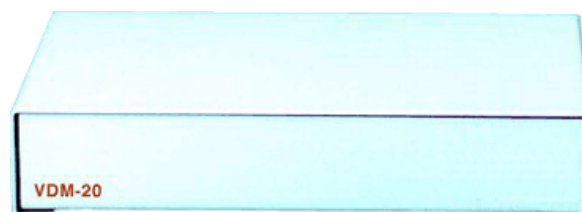


Motion Detectors

FDP-No.: 72352

VDM-20

- Simultaneous Surveillance of Two Video Channels
- Digital Video Motion Detection
- Free Programmable Sensor Zones
- Resolution: 2x 1024 Zones/Camera
- 28,672 Points of Detection
- Several Alarm Processings
- Sensitivity: 10 Steps
- Display on PC Monitor Screen
- Easy Programming



Specifications:

Video inputs	2x 1 Vp-p, (C)CVS, 75 Ohm, loop-through, BNC
Alarm inputs	None
Alarm outputs	2x Relais NO/NC contacts, RS-232 interface
Settings	Via PC software
Setting modes	Firmware and setup programming via RS-232 interface
Zone pattern grid	2 zone pattern grids with 1024 zones each per camera, Transfer of the video picture to PC monitor for positioning
Zones	Max. 6 scans/sec. of all zones Differential measurement for each zone with adjustable time Direction: Defines alarms by movement from certain directions Reference zone pattern grid for the decrease of environmental influences
Text display	Grid overlays monitor display

VDM-20

Alarm parameters	Sensitivity: Discriminates a moving target from the background by defining a level from 1 to 10 Ring memory with a writing time of up-to 2.5 sec. Adjustment of auto-reset and detection delay time for each zone pattern grid Definition of minimal and maximal number of activated zones per zone pattern grid
Alarm display	By LED and zone pattern grid display
Day/Night program modes	Not available
Alarm reset	Up-to 120 sec. (timer adjustable)
Password protection	Included
Remote setup	By modem (option)
Integrated real time clock	Not available
PS/2 keyboard connection	Not available
Supply voltage	12 VDC*)
Power consumption	Approx. 2.2 W
Housing	Steel metal sheet, desktop version
Power consumption	Approx. 2.2 W
Dimensions (HxWxD)	40x200x130 mm
Weight	415 g
Parts supplied	PC programming software on CD ROM, PSU, cables and sub-D plug

Additional descriptions

*) Power supply unit 230 VAC/12 VDC included