

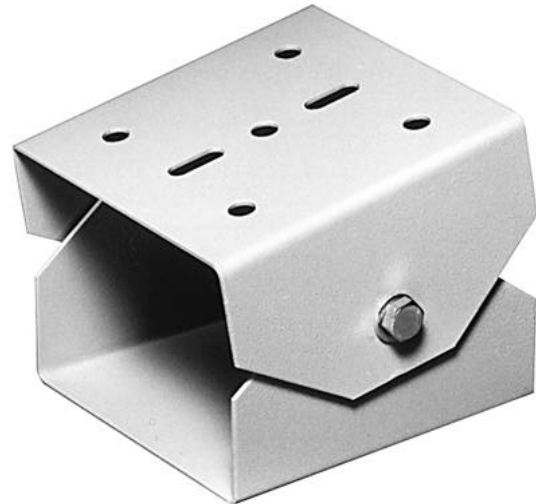


## Mounts for Weatherproof Housings

FDP-No.: 73014

### GK-2/I-N

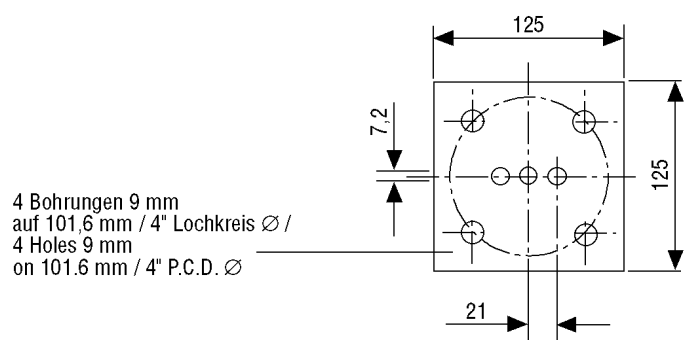
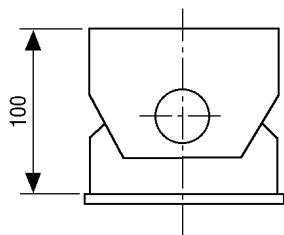
- For Weatherproof Housings
- Preferable for Mounting on WD-2N, MK-1N, MK-2
- Rugged Steel Construction
- Ready for Installation



### Specifications:

Load capacity	8 kg
Material	Steel
Colour	RAL 7032
Dimensions (HxWxD)	100x125x125 mm
Weight	1.2 kg

Zubehör für	
EDP No. / Type	Description
73008 WD-2N	Wall bracket for pan & tilt heads, recommended for VPT-40/41/42, light grey finish (RAL 7032)
73009 MK-1N	Pole bracket, recommended for all pan & tilt heads, light grey finish (RAL 7032)
73108 MK-2	Pole column spacer, for all pan & tilt heads, light grey finish (RAL 7032)



4 Bohrungen 9 mm  
auf 101.6 mm / 4" Lochkreis  $\varnothing$  /  
4 Holes 9 mm  
on 101.6 mm / 4" P.C.D.  $\varnothing$

Maße/Dimensions: mm