



DSX Access Systems, Inc.

WinDSX Guard Tour

WinDSX Real Time Guard Tour

The WinDSX Guard Tour feature is a great addition to any proprietary guard service. It allows the user to define specific routes, or tours, for the guard to take with time restrictions. The guard, in making his rounds, must check-in at predetermined Tour Stations within specified times. If the guard fails to check-in at the specified time, an alarm is generated at the PC. All activity is automatically logged to the computer's hard disk for later reporting.

The Tour is initiated at the PC when the guard is ready to begin his rounds. The guard must check-in at the predefined Tour Stations in the order and time specified by the Guard Tour. If the guard arrives early, the system reports he checked in early. If the guard fails to check-in or is late to a Tour Station, an alarm message appears at the PC that indicates which station he failed to check in at. Along with the "Failed to Check-In" Alarm an optional user defined response plan (Action Message) can be displayed for the operator or security personnel to follow. This type of real-time system ensures a quick response if the guard is compromised or incapacitated by alerting the operator or guard at the PC to the first sign of a problem.

Guard Tour is an integral part of the WinDSX System. It allows user controlled systems to make use of existing Access System hardware to perform guard tour management in a real-time fashion. The user simply defines a tour in the database and at anytime can start or stop the tour from the Workstation program. If there is an exception, the PC will beep and alert the operator that a guard has failed to arrive at a Tour Station, or simply display that he arrived early.

There are 999 possible Guard Tour definitions with each Tour having up to 99 Tour Stations. A Tour Station is a physical location a guard must reach and perform an action showing that he has arrived. This action, performed at the Tour Station, can be one of 13 different events with any combination of events in the same Tour.

A Tour Station can be one of the following event types:

- Access Granted
- Access Granted Passback Violation
- Access Denied Code
- Access Denied PIN
- Access Denied Time Zone
- Access Denied Level
- Access Denied Facility
- Access Denied Code Timer
- Access Denied Anti-Passback
- Input Alarm
- Input Alarm Restoral
- Input Abnormal
- Input Normal

Combinations of these events allow Tour Stations to be defined according to specific situations and needs or equipment available. In some cases, the guard may be checked-in by using his card or PIN to enter a door. In other situations it may not be necessary for the guard to gain entry but use his card or PIN just to check-in without the door unlocking. Another possibility would be for the guard to turn a maintained key switch to one

position at one point in the tour and later, in the same tour, turn the same switch back to its original position. This flexibility allows the user to construct the tours to meet their specific application utilizing existing access control and security hardware.

By assigning the same minimum and maximum times to all stations in the tour the Guard has to check in at all stations in the defined order but without specific minimum and maximum times for each station. The Tours can also be defined for Random Station Order, which allows the Guard to perform the Tour in any order as long as all of the Station requirements are fulfilled within the overall time limit set.

The system, by integrating Access Control with Guard Tour, is cost effective since it uses the same PC and hardware. Both systems operate simultaneously in real-time with no effect on each other.

The Tours are started in the Workstation Program by selecting the Tour to be run followed by a selection from the list of Guards. At any time the tour can be stopped or paused and restarted.

Below is a sample of the Guard Tour Definition Screen that is used to define the possible tours. The Tour Name is entered followed by the Station numbers and definitions. To add more stations into the same tour, select Add from the screen list and select the existing tour name. Each Tour will support up to 99 Stations or check points.

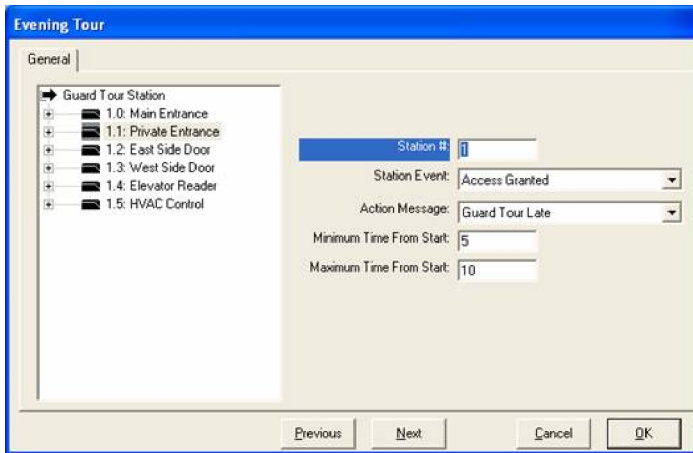
Card Defined for use with Guard Tour

The screenshot shows a software window titled "Jones, Bill Card #: 1" with a blue header bar. Below the header are three tabs: "Cards", "Access Level", and "Output Linking Level". The "Cards" tab is selected. The main area contains several input fields and checkboxes:

- Code #: 1
- Imprinted Card #: (empty)
- Start Date: 3 / 5 / 1998
- Start Time: 12:00 AM
- Guard Tour: (highlighted in blue)
- Status:
- P.I.N. #: (empty)
- # of Uses Allowed: 9999
- Stop Date: 12/31/9999
- Stop Time: 12:00 AM
- Override Anti-Passback:

Below these fields are "Date Last Used: 1/1/1000" and "Last Used At: Loc: 1 cfbddsgyb". To the right is an "Anti-PassBack Status" section with four buttons labeled "N", "N", "N", "N" and a row of buttons labeled "21", "22", "23", "24". A "Notes:" text area is at the bottom left. At the bottom of the window are four buttons: "Previous", "Next", "Cancel", and "OK".

Station Definition Screen



How to Start a Tour

