



PROFESSIONAL NETWORK VIDEO SERVER

DV-IP Server is a professional network video server with integrated recording designed to meet the demands of 24 hour video surveillance using new or existing IP enabled computer networks.

The Dedicated Micros range of video servers provide a cost-effective and reliable means to record and distribute video on any camera from any moment in time, on any screen, anywhere in the world. Typical applications include corporate buildings, shopping centres,

universities and hotels. DV-IP Server products allows images to be recorded to a local hard disk in high quality JPEG format, whilst simultaneously transcoding to MPEG-4 format for live and historical playback over low bandwidth networks.

The unit also features advanced alarm management, tamper proof alarm inputs, secondary signalling, fault tolerance and comprehensive system logs, critical for central monitoring station applications.

FEATURES

- ▶ **NetVu Connected**
- ▶ **Fully compatible with NetVu ObserVer**
- ▶ **6, 10 and 16 camera inputs**
- ▶ **Designed for central monitoring applications (BS-8418' compatible)**
- ▶ **Automatic connection to remote video receiving centre on alarm**
- ▶ **High resolution VMD, 16 zones selectable per camera**
- ▶ **Built-in web server for configuration and viewing**
- ▶ **Alarm inputs configurable for tamper or NO/NC operation**
- ▶ **Relay outputs, automatic or manual operation**
- ▶ **Transmission over Ethernet, dial-up and mobile phone networks***
- ▶ **Hybrid system - will not stop recording even in the event of network failure**
- ▶ **Uninterrupted recording, during playback, background image archiving and multiple user viewer**
- ▶ **Full Duplex audio with recording**
- ▶ **DHCP compatible**
- ▶ **Bandwidth limitation for Ethernet/dial-up/mobile phone networks**
- ▶ **24/7 scheduling, 10 holiday profiles**
- ▶ **SDK available for project customisation**



* VIA SUITABLE MEDIA INTERFACE – E.G. ROUTER

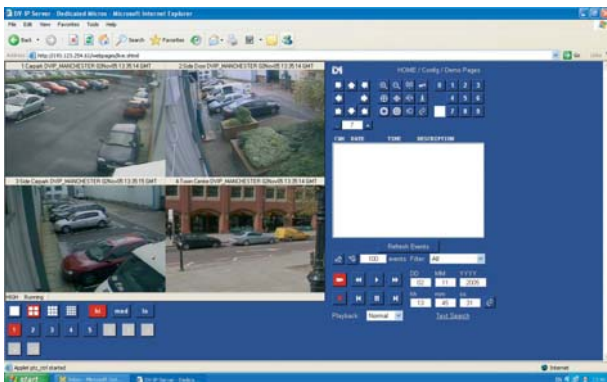
The DV-IP Server range comprises 6, 10 and 16 camera inputs, with choices of record rates from 50PPS to 100PPS, combined with the latest hard disk capacities.

NetVu Connected

The mark of compatibility NetVu Connected guarantees interoperability between DM products covering; embedded components, PC viewers and the software development kit.

NETWORK CONTROL

Control of DV-IP Server is achieved over Ethernet either by NetVu ObserVer or via a standard web browser. Pre-loaded web pages allow for setup, configuration, image archiving, live viewing, telemetry and playback.



Control of the DV-IP Server using a standard web browser

DV-IP Server is compatible with DHCP for automatic IP address assignment, the unit also supports manual IP settings. Video Bandwidth Restriction ensures image transmission only uses allocated bandwidth.

RECORDING

Simultaneous recording and playback from any camera continues uninterrupted whilst other images are being viewed live. The DV-IP Server also allows for the resolution of viewed images to be dynamically altered maximising live viewing performance over the available bandwidth.

MPEG-4 LIVE VIEWING AND PLAYBACK

This technology ensures that users of bandwidth limited networks have increased opportunity to view video in real-time. Features are provided to ensure the user can configure the DV-IP Server's image resolution, bit rate, and also how many pictures per second to transmit. All images are recorded locally in JPEG format to ensure that recording continues in the event of a network failure.

ADVANCED ALARM MANAGEMENT

Many otherwise successful remotely monitored installations are ruined by a single badly placed or intermittently obscured PIR, resulting in a stream of costly false alarms. The latest features added to the DV-IP Server such as tamper proof alarms and nuisance/stuck detector management have been designed to reduce false triggers. These functions will be most effective where cameras and PIR's have been installed to the latest code of practice for remotely monitored detector activated CCTV systems (known as BS-8418 in the UK).

17 (selectable tamper or NO/NC) and 1 (NO/NC) alarm inputs allow for the integration of PIR, panic buttons door contacts etc into the CCTV system. Using the alarms in tamper mode allows the type of alarm to be determined e.g. tamper, warning low resistance, warning high resistance etc. 6 light duty relay outputs are also provided offering further flexibility in executing remote tasks such as remotely switching on lights, opening doors and barriers. Relay output scan also be configured as part of an alarm response and executed the split second the alarm is tripped.

DV-IP viewer provides alarm receiving functionality (RVRC) where notification of alarms can be over Ethernet, PSTN or ISDN ensuring incidents are never missed. DV-IP Server is expandable using an optional CI01. Up to 8 contacts can be assigned to each camera input.

NetVu ObserVer

A standard Ethernet connection allows live and recorded viewing on a networked PC using Dedicated Micros NetVu ObserVer software or via web pages using a standard Internet browser. Network viewing is independent and does not affect the recording or local operation. TransVu includes a network bandwidth limitation option, which allows the bandwidth used by the unit to be capped. For low bandwidth remote network links, viewing applications can request that video is sent in MPEG-4 format, while local network viewers can simultaneously view using high quality JPEG images.

NetVu ObserVer software and Web page features include:

- Live full, quad, 6, 9 and 16 way screens
- VCR style fast forward and rewind, playback and frame advance/rew
- GOTO time and date
- File export of digitally signed images over the network to the user's PC using NetVu software
- Archived images can be viewed using DM's NetVu ObserVer software, supplied with the product and as a free download from the DM website.
- Remote manual control of relay output on the unit
- Telemetry control, including PTZ and telemetry presets
- Multiple user access
- Event log
- Network viewing is also available for Mac OSX and Linux

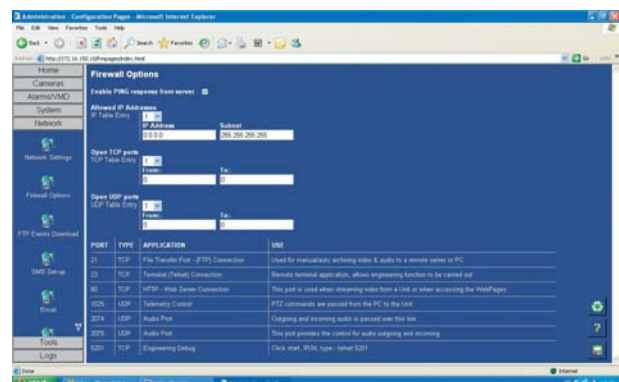
See the latest NetVu ObserVer datasheet for more information

VIDEO MOTION SEARCH FACILITY

Allows the user to search through hard-disk recordings for movement in a particular area of the image, set up on a 16x16 (PAL) cell grid (16x14 NTSC). The unit is then able to search back through the hard drive and create a list of activities for the user to view and archive as required. Searching can also be filtered to limit the search to user-defined times and dates.

SECURITY

DV-IP Server features a built-in firewall for network intrusion detection and protection. Network PING responses can be disabled, meaning it is no longer possible to discover the DV-IP Servers IP address using automated subnet scanning software. This coupled with the Trusted IP addresses list and the ability to open/close specific TCP and UDP ports ensures the DV-IP Server is configurable for use on any network large or small.



The DV-IP Server firewall configuration

PRE-ALARM

Each camera input can continuously capture a configurable number of images at a user defined pre-alarm capture rate. When an event occurs, the images captured before the alarm event are recorded to disk, allowing the viewer to see enhanced evidence leading up to the event.

CAMERAS

- 6, 10, and 16 inputs
- 1V Pk-Pk Video Input (looping)
- PAL, NTSC
- Colour, Mono mix
- 75Ω Camera Termination provided in software

MONITORS

- Spot monitor
- BNC 75Ω
- Full screen or full screen sequence

COMPRESSION

- Standard JPEG format files with user definable compressed image size for high quality recording.
- Simultaneous MPEG-4 network streams for low bandwidth remote viewing or background recording.

RESOLUTION

- Sample rate 13.5MHz to CCIR 601
- JPEG / MPEG-4
- QCIF, CIF, 2CIF, 4CIF
- PAL – 720x512 (Max)
- NTSC – 720x448 (Max)

RECORDING

- 50, and 100 PPS options (PAL)
- 60, and 120PPS options (NTSC)
- Variable record rate selectable per camera
- Simultaneous, recording, viewing, playback
- Time/date stamping of all images
- Event recording
- Looped recording

AUDIO² (MONURAL)

- 2 x Audio Inputs - Phono
- Full bi-directional audio with recording on each input software selectable
- 8Khz
- 47KΩ input impedance
- 2 x Audio Output - Phono
- 47KΩ output impedance

NETWORK SUPPORT

- RJ45 Connector
- 10/100 BaseT Auto Negotiation (or forced 10BaseT)
- Network Protocols Supported; IP, TCP, UDP, DHCP, FTP, TELNET, ICMP, HTTP, ARP ,
- Configurable port numbers for HTTP
- Built-in firewall for network intrusion detection and protection

SERIAL PORTS

- 4 x Serial Ports – comprising:
 - 2 x Full RS232 (9 wires)
 - 2 x RS232 (3 wires) RS485, RS422 (Telem ports)
- Dip switch selectable termination for DM485 Bus, Com 3 and Com 4

SERIAL PORT OPERATIONAL MODES

- PPP, Telemetry, Matrix Control, Debug, Text In Image

FRONT PANEL STATUS

- Network activity
- HDD activity
- Power

TELEMETRY

Coax

- BBV
- BBV RX100 (protocol converter for control of major manufacturer's domes)
- Pelco Spectra II & III (Please note that patrol modes are not available)

Serial

- Dedicated Micros 2040, 2060
- JVC TK-C675BE, TK-C676 & TK-C553E
- Ultak Ultradome™ KD6
- Ademco Orbiter & Jupiter Microspheres™

- GE CyberDome™
- BBV RE485 StarCard
- Bosch/Philips G3
- Ernitec
- Mark Mercer
- Panasonic WV-CS850A, WV-CS854, WV-CW860 external
- Sensormatic SpeedDome™ IV & SpeedDome™ V (with 4-wire RS-422 support)
- Pelco P Spectra II, Spectra III
- Samsung SCC-641
- Vista Power Dome

INTERNAL HARD DISK STORAGE

- Please contact Customer Services or check the website for latest information

EXTERNAL STORAGE

- SCSI II
- DM JBOD Support
- DM RAID Support

MATRIX CONTROL

- Ademco VCL – RS232
- American Dynamics – RS232
- BBV Serial telemetry – RS485
- DM Star Commands – RS232

ALARM CONTACTS

- 18 x Alarm Inputs Total
 - 1 x Aux Input (NO/NC only)
 - 17 x General Alarm Inputs (tamper¹ or NO/NC selectable)
- Normally Open/Normally Closed software selectable
- Tamper selectable¹

ALARM SUPPORT (BS8418¹)

- Tamper (Resistance)
 - 0 - 900Ω - Tamper (Short circuit)
 - 900 - 1.2kΩ - Normal (Closed)
 - 1.2 - 12kΩ - Alarm (Open)
 - 12kΩ - Infinity Tamper (Open circuit)
- Voltage Free
- Closed contact operation
- VMD Trigger
- Camera Fail Trigger

ADVANCED ALARM SUPPORT (BS-8418¹)

- Tamper proof alarm inputs
- Nuisance detector management
- Application watch dog
- Comprehensive system logs
- Secondary signalling support via relay contact
- Modem port for secondary signalling
- Relay system set/unset notification
- Entry/Exit routes for alarm inputs

RELAYS

- 6 onboard light duty relay output (500mA @ 12V-48V Max)

Default settings:

- Relay1 – Global alarm/user definable
- Relay2 – Global VMD/ user definable
- Relay3 – Global camera fail/user definable
- Relay4 – Set/Unset notification (BS8418 support1)
- Relay5 – Primary signalling failure (BS8418 support1)
- Relay6 – User definable

VIDEO MOTION DETECTION

- 80x64 pixel VMD detection resolution
- Programmable VMD grid with 16 individually definable zones per camera
- 3 different modes: Static, Last Trigger, Normal
- User-definable sensitivity for each zone
- Pre and post activity recording, definable by user
- Change camera recording rates on activity
- Notify user of activity over Ethernet, ISDN and PSTN
- Stores all VMD instances in Events database
- VMD images can be protected on HDD
- Global VMD relay
- Linkable to alarm zone

SPECIFICATION

IMAGE PROTECTION/UNPROTECTION

- All images tagged as an alarm will be automatically protected
- Non alarmed video footage may be user selected using time/date, from/to for image protection
- Images may be manually protected/unprotected

DIGITAL SIGNATURE

- Automatic Finger Printing on FTP download and on demand via software GUI

ARCHIVING

- All archiving is achieved via FTP on Scheduled, Polled, Manual request (on time/date from/to)

SCHEDULE

- 7 day schedule
- 10 definable holiday schedules

AUTHENTICATION

- Configurable password over network for;
- Viewing
- Playback
- Configuration
- Telnet
- FTP
- Serial port configuration

ADDITIONAL EXPANSION

- 2 x DM Bus (RS485)
 - 1 x CIO1 (Alarms – expanding to max 33)
 - 2 x CIO2 (Relays – expanding to max 38)

MULTILINGUAL SUPPORT

- English
- Italian
- Portuguese
- Croatian
- Norwegian
- Polish
- Spanish
- Russian
- German
- Danish
- Hungarian
- French
- Dutch
- Turkish
- Finnish
- Swedish

DV-IP SERVER RANGE

DV-IP SERVER 6 WAY 50PPS	DV-IP6
DV-IP SERVER 10 WAY 50PPS	DV-IP10
DV-IP SERVER 16 WAY 50PPS	DV-IP16
DV-IP SERVER 6 WAY 100PPS	DV-IP6D
DV-IP SERVER 10 WAY 100PPS	DV-IP10D
DV-IP SERVER 16 WAY 100PPS	DV-IP16D

SUPPORT APPLICATIONS

- NetVu ObserVer

BROWSER SUPPORT

- IE 5.5 and Above
- Netscape 4.7 and above

DEVELOPERS SUPPORT

- Java (Via the DM Software Developers Kit)

TEMPERATURE RANGE

- Operating Temp – 5 to 45°C (41 – 113°F)

RELATIVE HUMIDITY

- 5% to 85% Non condensing

DIMENSIONS

- Rack Mount – H89mm x W440mm x D445mm
H3 1/2" x W17 5/16" x D17 1/2" mounting
- The unit is designed to be mounted horizontally using the supplied brackets

SUPPLIED ACCESSORIES

- CDROM containing support apps and manuals
- Mounting brackets
- Serial cable

WEIGHT

- 11.4kg (25.1 lbs) with built-in PSU

POWER SUPPLY

- 180W Internal Power Supply
- Input Voltage – 100-240V AC 50/60 Hz

ACCESSORIES

CBUS ALARM MODULES

REMOTE ALARM MODULE

RELAY OUTPUT MODULE

RAID

JBOD

Note - BS8418 is the UK code of practice for detector activated CCTV systems.

PLEASE CHECK THE WEBSITE FOR DETAILS OF COMPATIBLE PRODUCTS AND OTHER LATEST DEVELOPMENTS

FOR FURTHER INFORMATION PLEASE CONTACT

Dedicated Micros UK
Dedicated Micros USA

11 Oak Street, Swinton, Manchester M27 4FL UK Tel: +44 (0) 845 600 9500 Fax: +44 (0) 161 727 3300.
14434 Albemarle Point Place, Suite 100, Chantilly, Virginia 20151 USA Freephone: 800 864 7539
Tel: +1 703 904-7738 Fax: +1 703 904-7743 and 23456 Hawthorne Blvd. Suite 100, Torrance, CA 90505,
Tel +1 310 791-8666 Fax: +1 310 791-9877.

Dedicated Micros Germany

Neckarstraße 15, 41836 Hückelhoven, Germany Tel: +49 243 352 580 Fax: +49 24 33 52 58 10.

Dedicated Micros France

9-13 rue du Moulinet, 75013 Paris, France Tel: +33 1 45 81 99 99, Fax: +33 1 45 81 99 89.

Dedicated Micros Asia

16 New Industrial Road, #03-03 Hudson Techno Centre, Singapore 536204 Tel : +65 62858982 Fax : +65 62858646.

Dedicated Micros Australia

5/3 Packard Avenue, Castle Hill, NSW 2154, Australia Tel: +612 9634 4211 Fax: +612 9634 4811.

Dedicated Micros Malta

UB 2, San Gwann Ind. Est., San Gwann, Malta Tel: +356 21483 673 Fax: +356 21449 170.

Dedicated Micros Middle East

Building 12, Suite 302, P.O.Box 500291, Dubai Internet City, Dubai, United Arab Emirates
Tel: +971 (4) 390 1015, Fax: +971 (4) 390 8655.

Dedicated Micros Slovenia

Delavska cesta 24, 4208 Sencur, Slovenia Tel: +386 4 279 18 90 Fax: +386 4 279 18 91.

Dedicated Micros Benelux

Joseph Chantraineplantsoen 1, 3070 Kortenberg, Belgium Tel: +32 2751 3480 Fax: +32 2751 3481.



www.dedicatedmicros.com

The manufacturer reserves the right to change the specification without notice.

All trademarks are courtesy of registered owners.

DV-IP is trademark of AD Holdings plc.

The DM logo is a trademark of Dedicated Microcomputers group Ltd.

NetVu Connected is a trademark of the AD group.

MKT-SERV-D-002E

