

TYPE 424/426/642 MOUNTING BRACKET

Description

Type 642 The type 642 is a robust outdoor wall bracket for loads up to 20kg (Type 642), where as the type 642B can accept pan & tilt head plus housing loads of up to 10kg.

Type 424 The type 424 is a heavy duty outdoor adjustable mount. Free standing or used in conjunction with type 435 wall bracket. Max. load 30 kg.

Type 426 The type 426 is an outdoor spacer column. Standard lengths 150, 250 & 350mm or to order. Max. load 20 kg.



Key features:

- Payloads of up to 20kg (Type 642)
- Payloads of up to 30kg (Type 424)
- Various lengths available (Type 426)

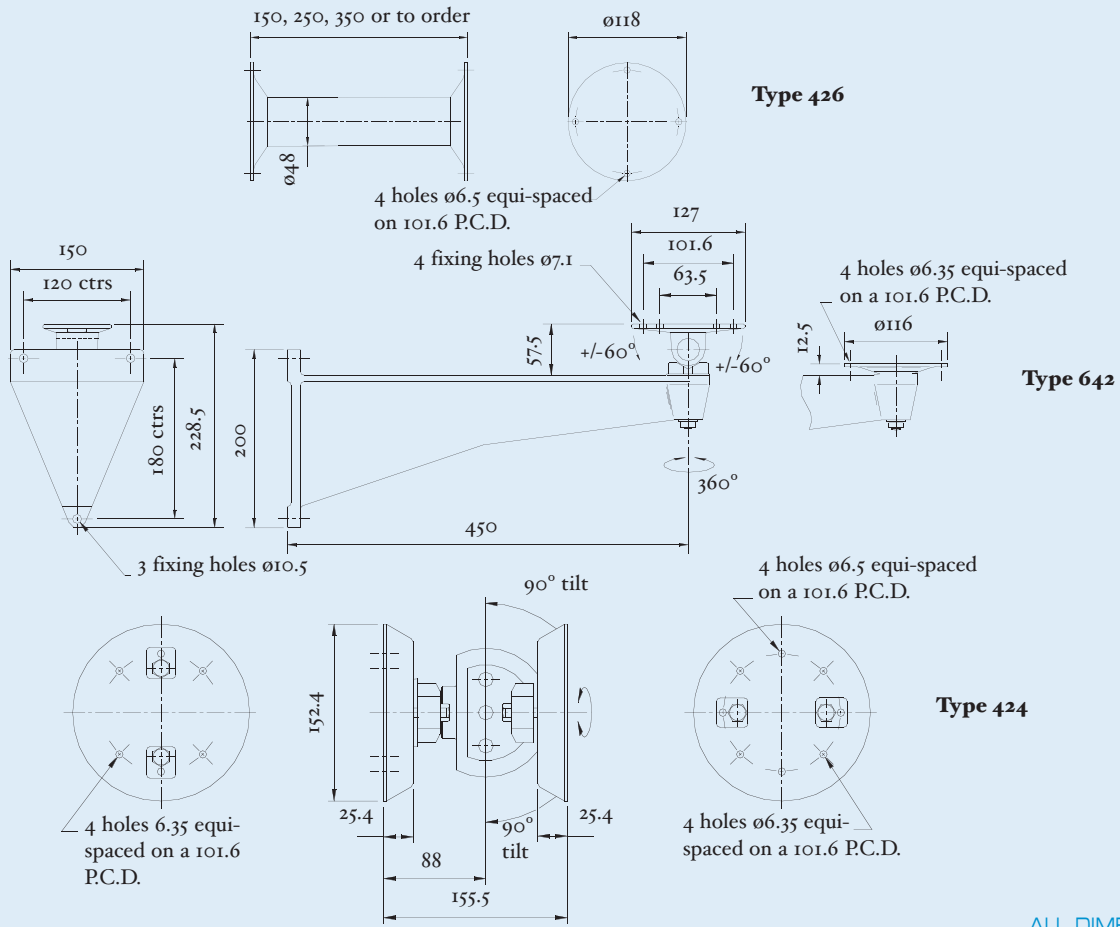
Dennard

FOR FURTHER INFORMATION or TO ORDER call +44(0)1252 614884
or go to..www.dennard-cctv.com or email: sales@dennard-cctv.com

6



TYPE 424/426/642 MOUNTING BRACKET



ALL DIMENSIONS IN mm

SPECIFICATION

	Type 642	Type 424	Type 426
Material	Aluminium alloy castings	Aluminium alloy castings	Aluminium alloy castings
Finish	Powder coated and stoved	Powder coated and stoved	Powder coated and stoved
Load:	20kg 10kg (642B)	30kg	20kg



Dennard Ltd 55 Fleet Road Fleet Hants GU51 3PN

T. +44(0)1252 614884 F. +44(0)1252 626013 email: sales@dennard-cctv.com

