



## Hybrid Security Alarm System

Realize the full potential of your Smart Home system with Hybrid Wired & Wireless System

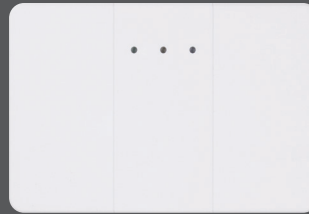


Climax Hybrid Security System is a wired and wireless IP-based smart home security gateway with LTE capability. It provides a customizable and robust system which takes advantages of both kinds of technology for commercial and large home applications, offering a comprehensive solution, including home security, total visual monitoring solution, ZigBee / Z-Wave home automation, and energy management and bringing all-round convenience, comfort and safety. The product is EN50131 Grade 2 (when in wireless mode) or Grade 3 (when in wired mode), Class II certified.

## Scalable System

Hybrid Security System supports zone expansion by integrating wired zone expansion modules WEZC-8 Series and WEZ-12/24/36/48-BUS, as well as hardwire-to-wireless converter, HWC-1 Series, ensuring flexibility and potential growth of the system.

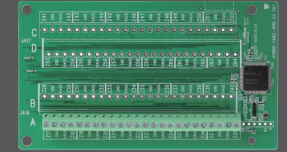
WEZ-12/24/36/48-BUS supports to add 12/24/36/48 wired zones to the system. WEZC-8 Series, enclosed with plastic housing, supports to add 8 wired zones to the system. These options of expansion module provide flexibility when it comes to installation. On the other hands, HWC-1 Series is designed to convert existing wired security sensors to wireless zones and can be installed anywhere, enabling retrofitting of traditional wired security systems.



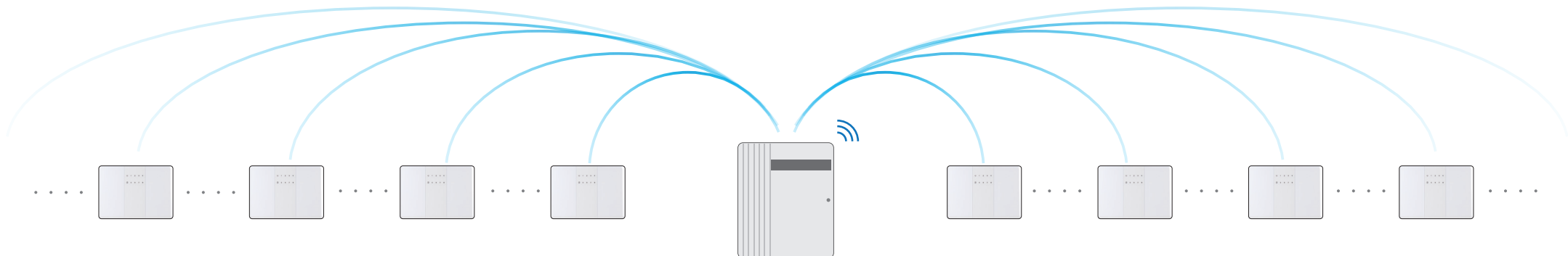
HWC-1 Series



WEZC-8 Series



WEZ-12/24/36/48-BUS



## Smart Automation

Hybrid Security System incorporates ZigBee or Z-Wave devices to create an integrated, comprehensive smart automation system, able to adapt to your lifestyle habits and enhance security. Thermostats, lights, shutters, and electronic appliances can be turned on/off according to temperature settings, customized schedule/scenes, and/or security status. You can easily tailor the Hybrid Security Gateway's services to meet your needs anytime, anywhere via smartphone app and web browser.



## Energy Management

Hybrid Security System can integrate whole-premise energy meters to report how much electricity the entire household/facility uses and ZigBee/Z-Wave power meter switches to monitor the power consumption of individual home appliances. With this power-saving system you can develop a useful strategy to reduce energy consumption.



**PSM-29**  
Power Meter  
Switch



**PRM-5**  
Power Meter &  
Relay Switch



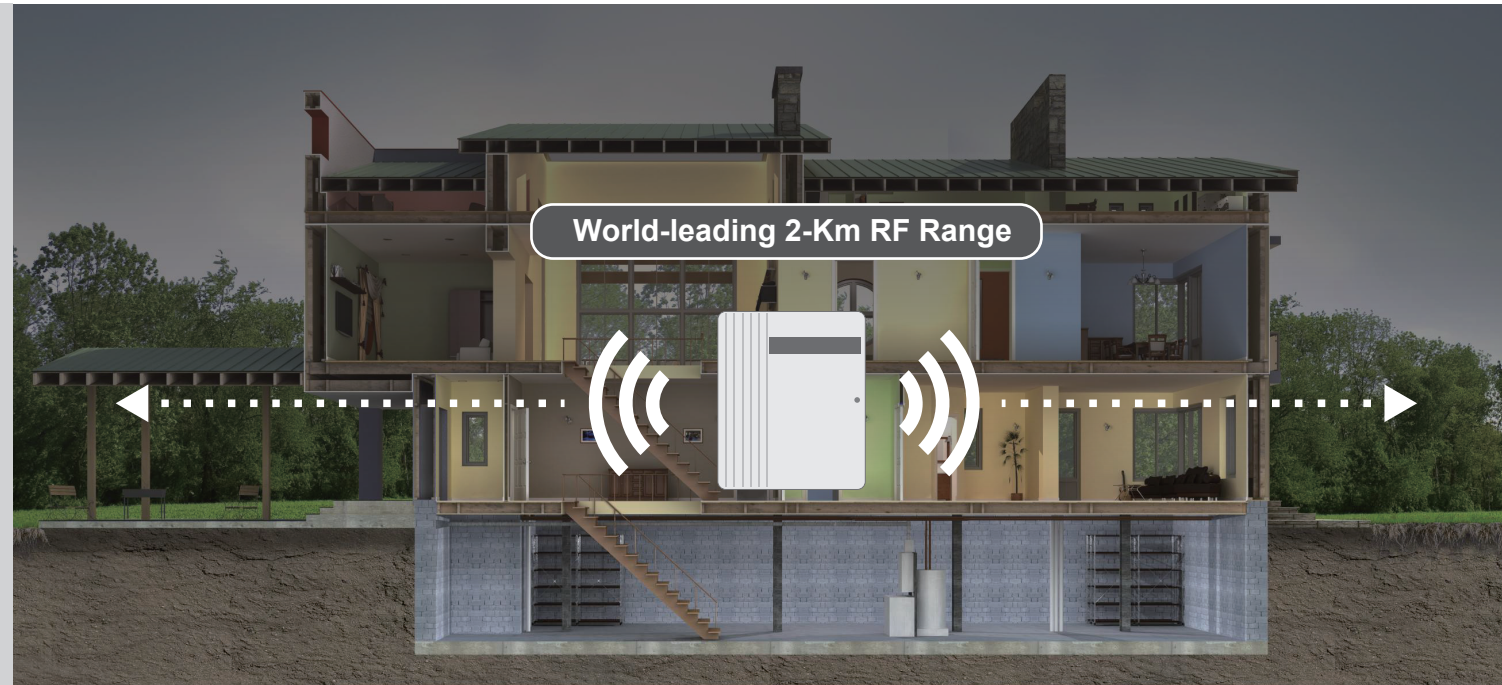
**EMD-1**  
Energy Meter



**POVS-1**  
PIR Occupancy/  
Vacancy Sensor

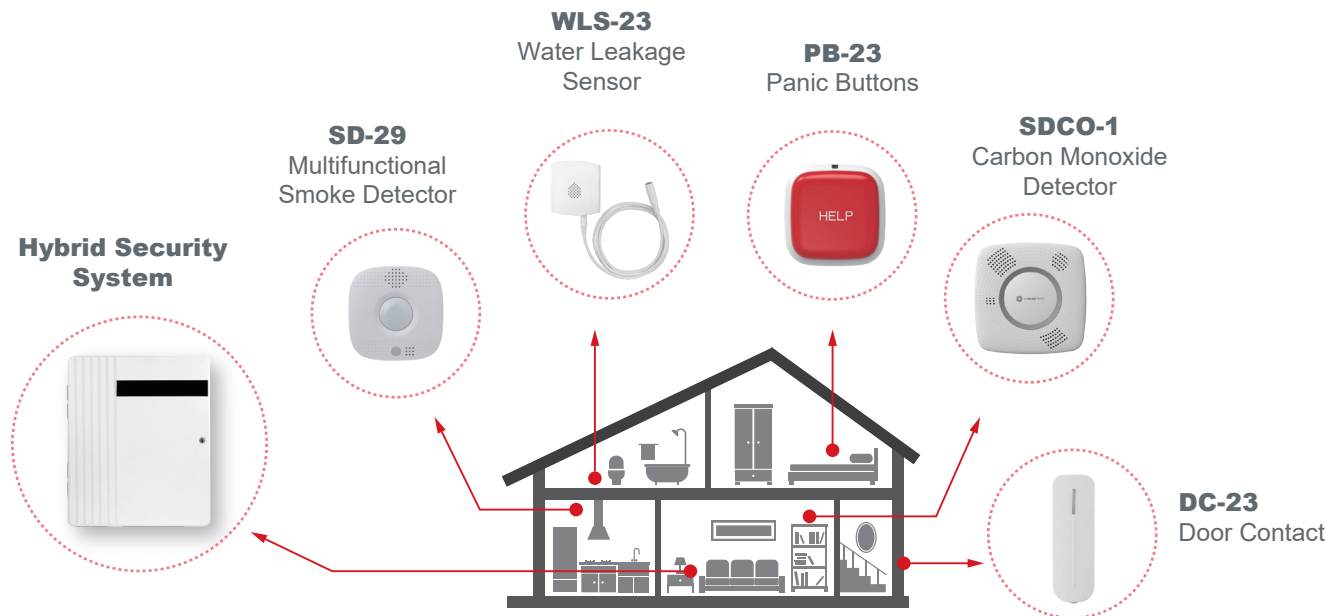
## World-leading 2-Km RF Range

Hybrid Security System utilizes Climax's groundbreaking Security@2km Wireless Technology that delivers RF communication range of 2 kilometers (1.5 miles), fast signal transmission, and relentless reliability. A major breakthrough in Climax's RF wireless technology has both massively extended the F1 systems' communication range and bolstered the systems' reliability. An optimum combination of record-breaking RF range, relentless reliability, and remarkable battery lifetime, the F1-generation systems are ingeniously designed to revolutionize the way you experience security.



## 24-Hour Emergency Monitoring

Hybrid Security System can incorporate smoke/heat detectors, water sensors, air quality sensors, panic buttons, light and humidity sensors to protect user's premises and property from damage cause by fire, heat, water, or air toxins. This round-the-clock monitoring ensures comprehensive prevention of disasters and quick response during emergencies.



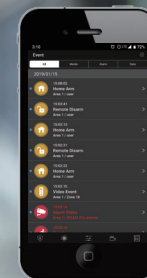
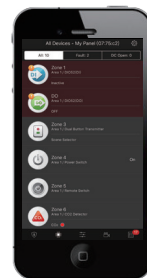
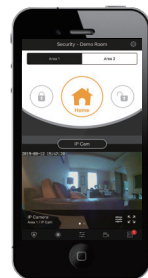
**Total Visual Monitoring Solution**

Indoor/outdoor PIR cameras, PIR video cameras, and IP cameras can be incorporated in Hybrid Security System for visual verification and real-time visual monitoring.

- VST-1818 R3  
IP Camera
- VST-892  
Camera PIR  
Motion Detector
- VST-892EX  
Outdoor Camera  
PIR Motion Detector

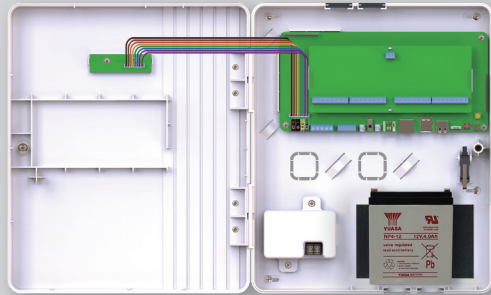
## Remote and Mobile Control

Hybrid Security System can be accessed anytime, anywhere, via Vesta Home 5 web portal or app. Vesta Home 5 enables users to control and manage the system via intuitive interface, as well as receive real-time event reports and view alarm videos/images. Users can have a clear overview of the whole system and have it totally in control all the time.



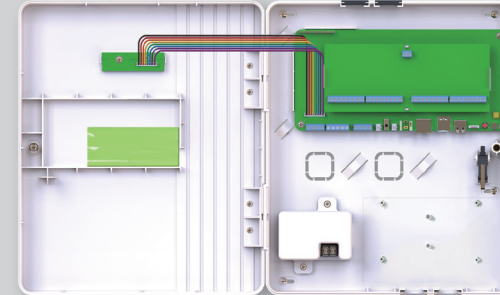
Specification

Hybrid Panel-1-AC16/18V | Hybrid Panel-1-AC100/240V



Hybrid Security System powered by AC16-18V or AC100-240V with required battery type: Sealed Lead Acid battery. Battery is not included.

Hybrid Panel-3-23/45-AC16/18V | Hybrid Panel-3-23/45-AC100/240V



Hybrid Security System powered by AC16-18V or AC100-240V with required battery type: 2300mAh or 4500 mAh Ni-Mh battery. Battery is included.

**Functions**

Number of areas	8
Number of wired zones	16 on-board zones
Zone expansion module options	WEZC-8: 8 wired zone expansion module with plastic housing WEZC-8B: 8 wired zone expansion module with plastic housing and battery WEZ-12-BUS: 12 wired zone expansion module / WEZ-24-BUS: 24 wired zone expansion module WEZ-36-BUS: 36 wired zone expansion module / WEZ-48-BUS: 48 wired zone expansion module WEPC-1: 4 PGM outputs with plastic housing / WEPC-1B: 4 PGM outputs with plastic housing & battery
Number of total wired & wireless zones	80 per areas, 640 in total
Number of wired keypads (KP-35-COMBO)	32 (via RS-485 connection)
Number of users	40 per areas, 320 in total
Wired input	NO/NC Single end-of-line (SEOL) / Double end-of-line (DEOL) Triple end-of-line (TEOL) (only for 4.7K, 6.8K, 12K) EOL resistance configuration (in ohms): 1K, 2.2K, 3.74K, 4.7K, 5.6K, 6.8K, 8.2K, 10K (32 pieces of 5.6K resistors are included in shipment)
Ethernet interface	RJ-45 connection
Tamper protection	Dual wall-mount & front cover tamper

<b>Electrical</b>	
Power supply	(1) 16-18VAC @ 40VA (2) 100-240VAC, 50/60 Hz
Total current consumption of wired zones, auxiliary output, & KP(T)-35-COMBO	13.5V (Typical) / 1.5A (without SLA battery) 13.5V (Typical) / 1.0A (with SLA battery)
PGM & Bell output	13.5V (Typical) / 1.5A (without SLA battery) ; 13.5V (Typical) / 1.0A (with SLA battery)
Backup battery	Backup battery options: (1) 12V/7Ah Sealed Lead Acid Battery (For Hybrid Panel-1 models) (2) 12V/4Ah Sealed Lead Acid Battery (For Hybrid Panel-1 models) (3) 7.2V 4500mAh Ni-Mh rechargeable battery pack (For Hybrid Panel-3 models) (4) 7.2V 2300mAh Ni-Mh rechargeable battery pack (For Hybrid Panel-3 models)
Battery duration *	(1) 12V/7A SLA: 36 hours (2) 12V/4A SLA: 21 hours (3) 7.2V 4500mAh Ni-Mh: 33 hours (4) 7.2V 2300mAh Ni-Mh: 17 hours
<b>Wireless</b>	
LTE Frequency	EU: B1 (2100 MHz) / B3 (1800 MHz) / B5 (850 MHz) / B7 (2600 MHz) / B8 (900 MHz) / B20 (800 MHz) US: B2 (1900 MHz) / B4 (1700MHz) / B12 (700MHz)
3G Frequency	EU: B1 (2100 MHz) / B5 (850 MHz) / B8 (900 MHz) US: B2 (1900 MHz) / B4 (1700MHz) / B5 (850 MHz)
RF Frequency	F1 868 MHz / F1 433 MHz
ZigBee Protocol	ZigBee Pro HA 1.2, 2.4GHz
Z-Wave Protocol	Z-Wave 500 / 700 series module 868.40MHz (EU) / 908.40MHz (US)
Wi-Fi	802.11 b/g/n, 2.4GHz
DECT Module	Reserved

Physical Properties	
Operating temperature	-10°C to 45°C (14°F to 113°F)
Operating humidity	Up to 85% non-condensing
Dimensions	268 mm x 320 mm x 80 mm
Credentials	
Certifications	CE; FCC; EN50131 Grade 2 (wireless) or Grade 3 (wired), Class II certified

**Note:**

\* The battery duration is calculated under the condition that each hardwired zone consumes 2mA. Actual battery life may vary with product settings, operating environment, and usage patterns.

## Ordering Information

<b>Hybrid Panel-1-AC16/18V</b>	Hybrid Security System powered by AC16-18V, with required battery type: Sealed Lead Acid battery (battery not included)
<b>Hybrid Panel-1-AC100/240V</b>	Hybrid Security System powered by AC110-240V, with required battery type: Sealed Lead Acid battery (battery not included)
<b>Hybrid Panel-3-23/45-AC16/18V</b>	Hybrid Security System powered by AC16-18V, with required battery type: 2300 mAh / 4500 mAh Ni-Mh battery (battery included)
<b>Hybrid Panel-3-23/45-AC100/240V</b>	Hybrid Security System powered by AC110-240V, with required battery type: 2300 mAh / 4500 mAh Ni-Mh battery (battery included)