

Smarter Security with Versatile Power Design



HSGW-Gen3

Smart Security Gateway

- Three power modules catering to different applications
- Effortless switching between power modules
- Supports up to 400 devices / 32 PIR cameras

HSGW-Gen3

Smart Security Gateway



Swap between 3 power modules with ease



Portable battery for off-grid locations



Low-voltage DC input for flexible sites



Standard AC power for daily operation

400 X

Supports 400 wireless devices

32 X

Supports 32 PIR cameras



Manage remotely via app or web

The HSGW-Gen3 is a versatile security system compatible with three interchangeable power modules: 6–7.5 V DC module that supports portable batteries for off-grid sites, 12–24 V DC module for low-voltage sources, and a 100–240 V AC module for standard mains power. Each module is tailored for specific environments and safety needs, and can be swapped easily, eliminating the need for multiple product variants. A built-in rechargeable battery provides reliable backup during power outages.

Compared to its predecessor, the HSGW-Gen3 supports up to 400 devices and 32 PIR cameras, providing greater scalability and coverage. With robust connectivity and flexible power options, it delivers a reliable, future-ready solution for residential and commercial security.

Application Scenarios for 3 Compatible Power Modules

HSGW-Gen3 features three interchangeable power modules, each tailored for specific environments and safety needs. The modules can be swapped easily, offering flexible installation and diverse applications.



Extended Off-Grid Protection



6–7.5 V DC module

- Supports 6-7.5V zinc-air portable battery
- Powers security at remote or off-grid locations without electricity



Low-Voltage Power Integration



12–24 V DC module

- Supports 12–24V DC Input
- Power compatible with low-voltage systems such as RVs, campervans, boats, and yachts



Reliable Daily Operation

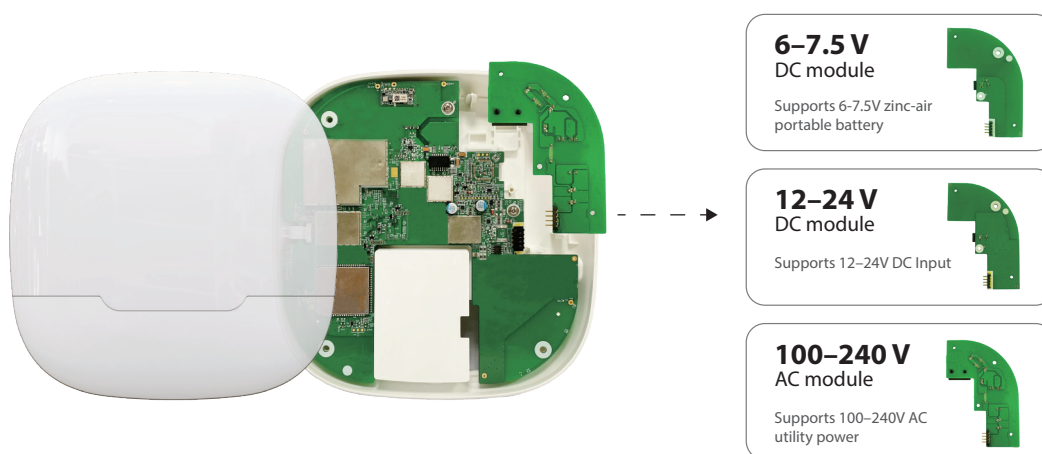


100–240 V AC module

- Supports 100–240V AC utility power
- Employs standard AC power for homes, offices, and businesses

Quick Power Switching

Power modules can be swapped easily, eliminating the need for multiple product variants and simplifying global installations.



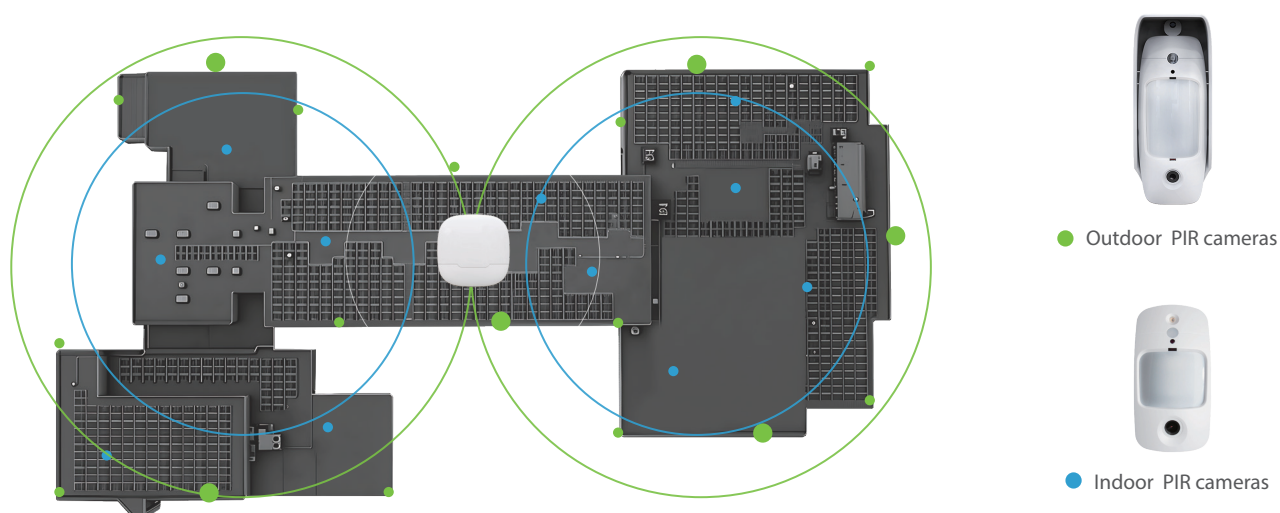
Increased Connected Devices

Supports more device connections and a higher number of PIR cameras for greater scalability and coverage.



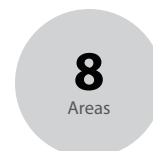
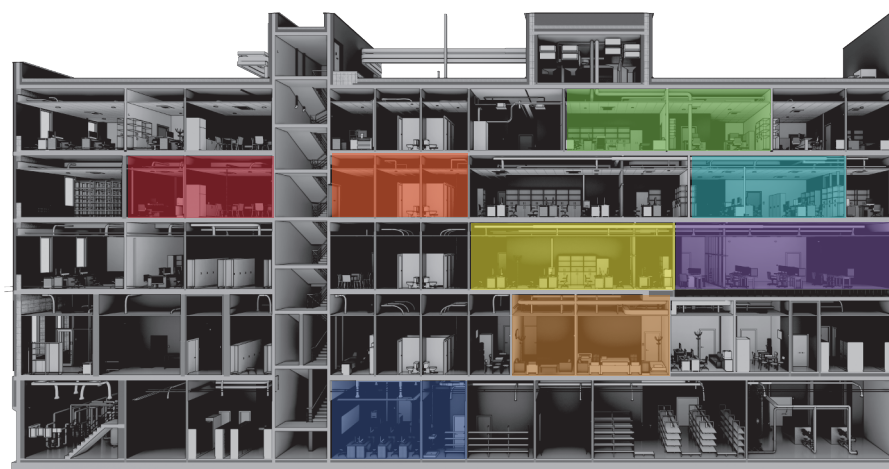
Comprehensive Coverage

Supports 32 PIR cameras to provide wider coverage of visual verification, strengthening protection.



Up to 8 Areas per Panel

Accommodates larger installations with up to 8 areas and 400 wireless devices, ensuring flexible and expandable system design.



F1 Technology: 2 km Long-Range, Powerful Penetration

F1 technology delivers up to 2 km (1.5 miles) communication range with powerful penetration, enhancing overall system reliability.



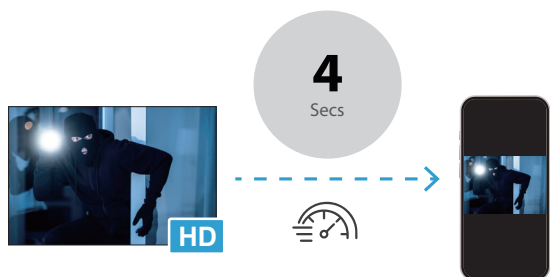
Security-based Automation

Supports scenarios such as arming/disarming by schedule, event-triggered actions (e.g. burglary, fire, or panic alarms) to drive sirens, send push/SMS/central station notifications, or activate programmable outputs (lights, locks, shutters, relays).



High-Speed Visual Alarm Verification

Supports HD image transmission, while VGA/QVGA snapshots can be transmitted as fast as 4 seconds to enable rapid visual alarm verification.*



*4 seconds for QVGA

30 Hours of Backup Battery

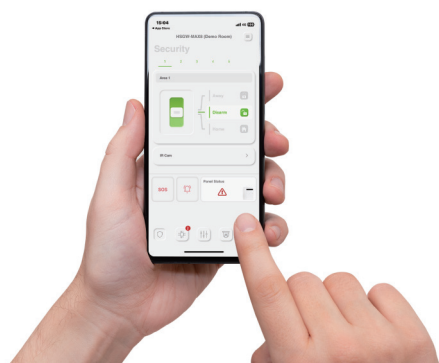
Built-in rechargeable battery ensures automatic power backup during outages for 30 hours of continuous operation and security.



Remote & Mobile Control

Vesta Home App

The end user can download the Vesta Home App from the App Store or the Google Play Store to manage the HSGW-Gen3, receive event reports and view alarm videos/images on a smartphone.



Home Portal Server

Home Portal Server, Climax's high-capacity IP/GPRS platform, enables the CMS to remotely manage the HSGW-Gen3 and serve customers.



Other Features

- Compatibility with 3 different power modules for specific usages
- Easy method to swap the power modules
- Supports up to 400 devices, 8 areas
- Supports up to 32 PIR cameras
- Built-in siren and backup battery
- Real-time Video Monitoring & Visual Verification Reporting features
- Energy management capabilities
- 24/7 environment emergency monitoring
- Remote management of lights, thermostats, locks and home appliances / sensors via App and Web browser
- Tamper alarm against sabotage
- Over-the-air firmware update capability

Specifications

HSGW-Gen3 Smart Security Gateway

Reporting Path	IP (Ethernet) / LTE
Built-in Protocol	RF
Wireless Devices Supported	400 devices, 8 areas
Number of PIR cameras	32 maximums
Frequencies	868 MHz / 919 MHz / 433 MHz
3G Frequencies	EU: B1 (2100 MHz) / B5 (850 MHz) / B8 (900 MHz) US: B2 (1900 MHz) / B4 (1700MHz) / B5 (850 MHz)
LTE Frequencies	EU: B1 (2100 MHz) / B3 (1800 MHz) / B5 (850 MHz) / B7 (2600 MHz) / B8 (900 MHz) / B20 (800 MHz) US: B2 (1900 MHz) / B4 (1700MHz) / B12 (700MHz)
Power Sources	Compatible power modules: <ul style="list-style-type: none"> • 100–240 V AC module: 100–240 V AC, 50/60 Hz • 12–24 V DC module: 12–24 V DC (1A at 12V, 0.5A at 24V) • 6–7.5 V DC module (for portable battery): 6–7.5 V DC, up to 2 A Recommended Battery: <ul style="list-style-type: none"> - 6V 4890 Wh, 960Ah Zinc Air Alkaline (up to 2.2 years) - 7.5V 2150 Wh, 330Ah Zinc Air Alkaline (up to 1 year)
Rechargeable Backup Battery	3.6V, 2300mAh, Ni-mH rechargeable battery pack
Backup Battery Life	<ul style="list-style-type: none"> • Power saving mode: Up to 36 hours • Full network connectivity: Up to 33 hours
Operating Temperature	-10°C to 45°C (14°F to 113°F)
Operating Humidity	Up to 85% non-condensing
Dimensions	195mm x 195 mm x 42 mm

**Note: Supported only with 100–240 V AC or 12–24 V DC module; the 6–7.5 V DC module does not support charging*

***Note: Actual battery life may vary with product settings, operating environment and usage.*