



CN56X0B TCP/IP NFC Smart Card Reader

Technology-packed Reader introduce
DESFire® EV1, Mifare® Plus & NFC

Optimized to make physical access more secure and smart, CN56X0B access readers introduce multi-technique to work with all main 13.56MHz smart cards as DESFire EV1, MIFARE Plus and Sony Felica to enhance security through high encryption and multi-authentication, and ISO18092 NFC for mobile phone access solution.

Adopt advanced high performance CPU, CN56X0B achieve fast running speed and lower consumption to ensure system more stable and affordable. It is with wide operating voltage and unique multi-interface design as RS232/485, TCP/IP, Wiegand, C&D&ABA with various output formats to meet high compatibility for most controllers on the market.

More than traditional access control reader application, CN56X0B is also suitable for general purpose such as time attendance, personal identification, membership and E-payment on security and smart card applications to build flexible and intelligent low cost solution.

► Advantages

- Multi RFID smart card options: ISO14443A/B, Mifare
- DESFire EV1 Mifare Plus, Felica
- Support ISO/IEC18092 NFC Peer-to-Peer mode
- Support High Speed of ISO14443 up to 424 kbps
- Build-in tamper-resistant Switch
- Three-wire fully control LED and buzzer
- Build-in TCP/IP interface and relay
- Support DHCP and Static IP address assignment
- Support TCP/IP online upgrade via Web page, to greatly ease firmware upgrade and IP parameter setting
- Factory default setting and system reset function for easy setting
- Keypad Shortcut to enter upgrade mode and factory parameters recover mode.
- Flexible to integrate with Civintec device and other access control system
- Can be installed on metal surface
- Firmware customized design to meet various requirement
- Customized design to meet various requirements
- Embedded SAM (Secure Access Module) on request

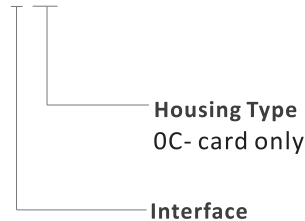
► Family Member

| | CN5600B | CN5610B | CN5620B | CN5630B | CN5650B |
|-------------|---------|---------|---------|---------|---------|
| MIFARE | • | • | • | • | • |
| MIFARE Plus | | • | | • | • |
| DESFire EV1 | | | • | • | • |
| NFC | | | | | • |
| Felica | | | | | • |

* CN5600B – R/W Mifare Secure Sector
CN5600BS– R/O Mifare UID

► Order Code

CN56X0B-X-XX



- 2 - RS232, Wiegand/Clock & Data/ABA1,2
- 4 - RS485, Wiegand/Clock & Data/ABA1, 2
- T - TCP/IP, Wiegand/Clock & Data/ABA1, 2

► Applications

- Access Control
- Time Attendance
- Personal Identification
- E-payment
- Public Transportation
- Loyalty

► Product Images



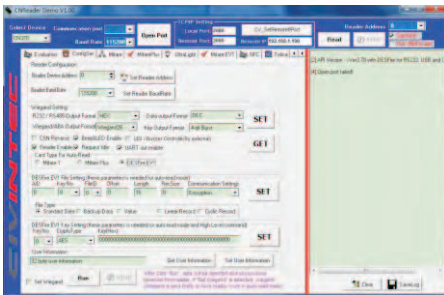
126*68*19mm
OC Wall Mount reader
CN56X0B-X-OC

► Specifications

| Model | CN56X0B-X-XX |
|-----------------------|---|
| Operating Frequency | 13.56MHz |
| ISO18092 | ISO18092 NFC peer to peer |
| RFID Standard | ISO14443A4(part 1 -4), Mifare, Mifare Plus and DesFire EV1, Felica |
| RFID Card Supported | Ultralight, Mifare 1K/4K, Mifare Pro/Prox, Mifare Plus, DESFire EV1 and other ISO14443A NFC tags (T2T, T4T) compatible cards, Sony Felica, ISO14443B on request |
| Power Supply | 9V DC (9-24V), <1 50mA |
| Interface | - RS232, Wiegand (26, 34, 42, 50, 58) / Clock & Data 8, 1 0 / ABA1 , 2 - RS485, Wiegand (26, 34, 42, 50, 58) / Clock & Data 8, 1 0 / ABA1 , 2 - TCP/IP, Wiegand (26, 34, 42, 50, 58) / Clock & Data 8, 1 0 / ABA1 , 2 |
| Reading output format | Wiegand 26, 34, 42, 50, 58 / Clock & Data 8, 1 0 (3 byte, 5byte, HEX, ASCII) / ABA1 , 2 |
| Keypad output format | 4bit, 8bit, wiegand 26 |
| Keypad | 3*4 keypad with backlight |
| Indicators | Bio-color LED and Buzzer controlled by three-wires |
| Reading Distance | 50 - 1 00mm (depending on antenna, transponder) |
| Writing Distance | 30 - 70mm (depending on antenna, transponder) |
| Operating Temperature | -20° C`+60° C / -4° F`140° F |
| Storage Temperature | -20° C`+60° C / -4° F`140° F |
| Operating Humidity | 0 ~ 95% relative humidity non-condensing |
| Housing Material | ABS |
| Protection Class | IP65, electric epoxy potted for harsh environment |

* Specifications are subject to change without notice.

► Config Tool Software



CN56X0B Config Tool is provided for CN56X0B-X-XX configuration and test including set Reader device address, baud rate, interface output format, read card block, config the parameters for Mifare, Mifare Plus, DESFire Ev1, Ultralight Felica and NFC tag, support ISO14443A. The tool also can control reader's buzzer and led by external setting, furthermore, setting, furthermore, it features Default Setting and Reset function for easy custom's using.

► Hardware Testing Package (HTP)

A plug & play Hardware Testing Package (HTP) is provided to ease your fast testing and evaluation. The package is listed as the table below. (Item different according to part no. of products).

Package list:

- (1) Testing board
- (2) Power supply
- (3) Serial & USB Communication cable
- (4) RS232-RS485 converter module
- (5) wires & cable
- (6) Testing cards and tags

► Configuration

