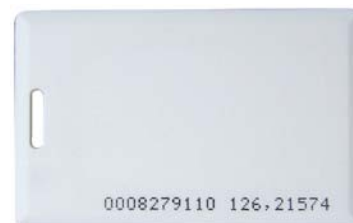


Contactless Clamshell Card

Our Clamshell Card is a lower cost RFID card solution. Clamshell Cards provide a white or grey surface which can be with a series inkjet number printing. Our transponder technology guarantees an outstanding R/O or R/W performance. Customized design such as different color and chip are available on request.



Technical specification

Product name	Contactless Clamshell Card
Product No.	
Material	ABS shell
Color	White / Grey
Size	85.60mm (L) x 53.98mm (W)
Thickness	1.80mm
Operating frequency	13.56MHz
ISO standard	13.56MHz ISO14443A/B, ISO15693
Operating temperature range	-20°C ~ +60°C / -4°F ~ +140°F
Humidity	Suitable for indoor and outdoor using
Dirt, Dust	Resistant available on request
Chip technology	Mifare series, DESFire, Ultralight, I-Code, TI ST, others on request
Encoding	Available on request
Special function	Combi clamshell card available on request

Services & Application

Programming & Encoding

Depending on our production line, we provide this services which exactly fit client's programming or encoding requirement.

Technologies & Application

- * Access control card
- * Parking solution
- * Campus ID card
- * Contactless card etc
- * Dual-frequency card

