

# AC2000 exacqVision Interface

## exacq IP and Hybrid Network Video Recorders (NVR)



### Features that make a difference:

- Seamlessly integrate AC2000 with exacqVision Video Management System (VMS) servers
- Associate access control alarms with digital video footage
- Playback alarm videos, take snapshots and download video clips of recorded and live footage
- View alarm videos as they occur, control the camera and sort alarms by priority in Video Popup
- Define video alarm actions in AC2000 DVR Video Configuration
- Display up to 16 individual camera feeds simultaneously using the Live Viewer
- Control pan, tilt, and zoom (PTZ) cameras and move to specific presets via AC2000

The AC2000 exacqVision Interface enables AC2000 to act as a flexible and fully integrated Security Management System (SMS). It provides the ability to define video alarm actions, view live footage as alarms occur and control cameras and run camera presets.

The AC2000 DVR Video Configuration module seamlessly integrates AC2000 with exacqVision Video Management System servers. This will give operators the ability to define video alarm actions, search alarm feeds and playback recorded video from alarms.

This high-level interface allows AC2000 to receive video alarms such as Video-Loss, Video-Motion and DVR Offline generated in the exacqVision system and processes these alarms in AC2000 Alarm Event Display (AED), Alarm Viewer or Video Popup.

AC2000 AED enables all alarms, events and associated camera footage to be displayed centrally on the AC2000 system.

### DVR Viewer

In DVR Viewer, the Live Viewer application provides live video footage from up to 16 individual cameras through registered NVRs. The application allows PTZ cameras to be controlled using the DVR Viewer's standardised control system and cameras can be moved to specific locations using the Set and Run Preset buttons.

Alarm Viewer allows the operator to playback recorded video footage of alarms selected from the Search Alarm Feed section. DVR Viewer also has facilities to download video clips and take snapshots from live footage and recorded alarm videos.

### DVR Import Tool

AC2000 DVR Import Tool simplifies the setup of exacqVision VMS servers for use with AC2000 Security Management System. All cameras on the Exacq server are imported and configured automatically.

### DVR Video Configuration

The DVR Video Configuration tool allows users to set up video alarm actions for cameras.

### Alarms with associated video

If an alarm event contains associated video footage, the operator can access the footage within the AC2000 AED (Alarm Event Display) application which will activate a DVR Viewer.

Once the DVR Viewer has launched, the actual video footage is then uploaded from the exacqVision VMS servers. The viewer window will automatically display the video playback from the start of the footage. Standard video controls are available on the DVR Viewer to Play, Pause, and Fast Forward/Rewind. Additionally, system operators can view archived video footage by running alarms reports in the AC2000 Extended Reports application.

### Camera control

A camera control facility is available for PTZ cameras such as dome-based devices. The following controls are available:

- Zoom In and Out
- Camera Preset Set and Run Abilities
- Pan + Tilt Control

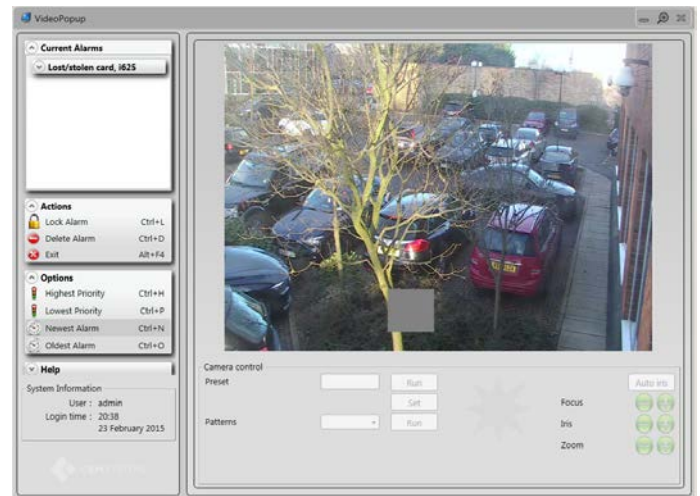


### Live video feed

In DVR Viewer, video screens can be split into 1x1, 2x2 (4), 3x3 (9), or 4x4 (16) options allowing the operator to view live footage from up to 16 cameras simultaneously, each in its separate pane.

### Video Popup

The Video Popup application allows users to view alarms as they occur. The user can view the alarm in real-time without having to wait until the video footage is stored. The user can take control of PTZ cameras to track the cause of the alarm and this footage will be recorded. Multiple alarms can be selected and sorted by priority.



### Requirements

- AC2000
- AC2000 Lite
- AC2000 Airport v6.8 & upwards
- exacqVision SDK v1.20.1

### Ordering Information

| Product Codes | Description           |
|---------------|-----------------------|
| SWNVN-EX      | exacqVision Interface |

### Related Products



AC2000  
AC2000 Lite  
AC2000 Airport

[www.cemsys.com](http://www.cemsys.com)