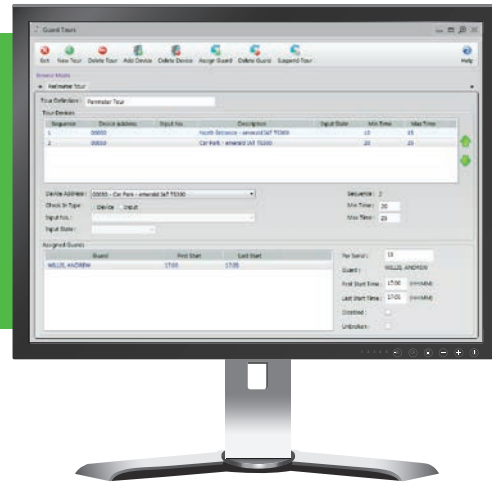


AC2000 Guard Tours



Features that make a difference:

- Early and late guard tour alarms can be generated to the AC2000 AED (Alarm Event Display) application
- Multiple tours can be configured for different areas
- Actions are not limited to card swipes, can include any input type, such as a key switch
- Reports can be generated for the whole tour, not just alarms
- Assign multiple guards to a single tour
- Unlimited number of guard tours

AC2000 Guard Tours provides the facility to define a list of readers/ inputs that a security guard must visit in a certain order and within a specified time period. If the guard does not either swipe at a pre configured card reader time or activate a pre configured input within the guard tours parameters, an alarm will be sent to the AC2000 AED (Alarm Event Display) application.

The highlighted alarm on the AC2000 AED responds to all situations in real time and provides a dynamic on-screen interface to external CCTV video systems. This will allow administrators to visually monitor guards and ensure they are carrying out their duties.

The AC2000 Guard Tours application also gives the option to temporarily suspend and resume a tour e.g. if there is an issue on the tour and a guard decides to investigate further, the tour can be suspended until the issue is resolved.

AC2000 Guard Tours is a valuable resource for all companies who want to ensure their security guards are securing the premises as per procedures. This is a particularly useful tool for night time duties. Advanced AC2000 Guard Tour reports provide the ability to report on all tours, a specific tour or a specific guard.

Requirements

- AC2000 v4.4 software & upwards
- AC20000 Airport v4.4 software & upwards
- AC2000 Lite v5.7 software & upwards

Related Products



AC2000, AC2000 Airport
AC2000 Lite