

# AC2000 DVR Interface

American Dynamics Intellex™ DVMS

## OVERVIEW

The AC2000 DVR interface for American Dynamics Intellex™ provides the ability to associate access control alarms with digital video clips. The DVR Configuration Module seamlessly integrates AC2000 with Digital Video Management Systems (DVMS) giving the operator a range of video imaging facilities to generate alarm reports with associated video, view live video feed, control camera positioning, control image quality and capture images to file.

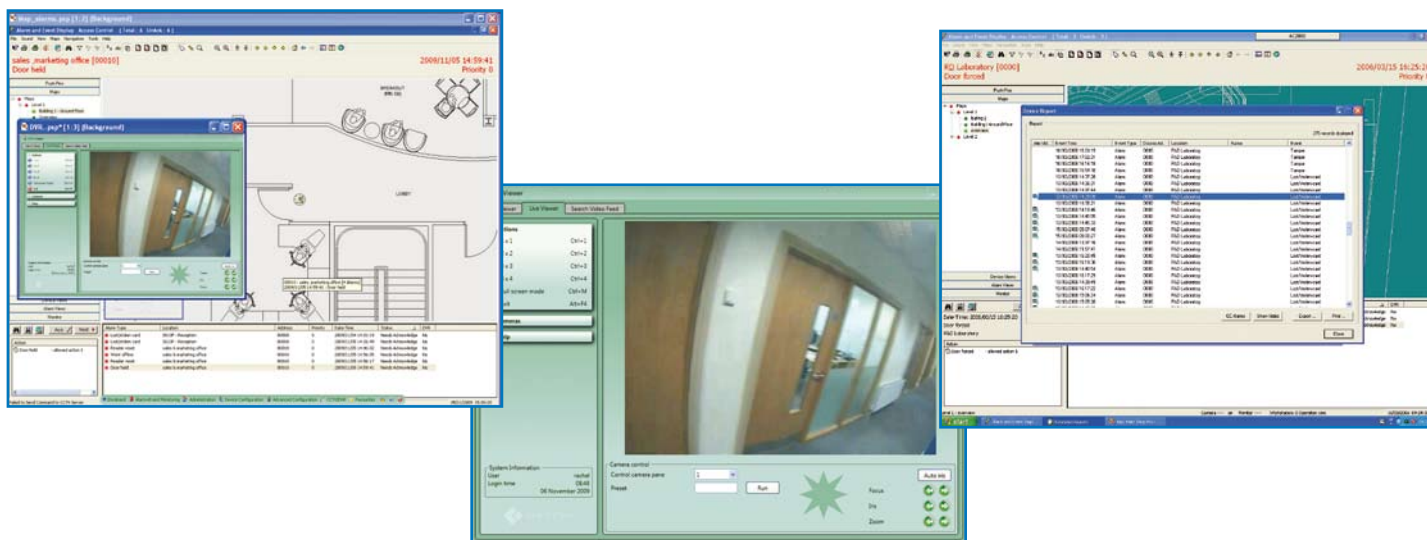
The system allows a user to fully integrate the power of a CCTV and DVMS network into the AC2000 Alarm and Event Display (AED) system. This network can be composed of a number of DVMS servers, plus a network of CCTV cameras located throughout a site.

AC2000 DVR Interface has been designed to integrate easily with the full range of Intellex from American Dynamics.

## FEATURES

- Seamless integration with American Dynamics Digital Intellex Video Management Systems
- Associate access control alarms with digital video footage
- Live video feed activated directly from AC2000 AED (Alarm and Event Display) module
- Camera icons can be positioned in AED module alongside access control readers
- Display up to 16 individual camera feeds simultaneously in a single screen matrix
- Capture images from live video and saved them to common picture format (BMP)
- Adjust camera pan, tilt and zoom via integral software control
- Compatible with American Dynamics Intellex™ range of DVMS (Classic and Ultra)
- Available for use in AC2000 SE (Standard Edition), AC2000 AE (Airport Edition) and AC2000 Lite version 5.0 and upwards

## SOFTWARE HIGHLIGHTS



### Alarm report with associated video

If an alarm event contains associated DVR footage, the operator can access the footage by clicking on the film reel symbol shown alongside each alarm in the Device Report screen activating the DVR Alarm Viewer.

Once the DVR Alarm Viewer has launched, the actual footage is then uploaded from the DVR server. The image window will automatically display the video image from the start of the footage.

Standard video controls are available on the DVR Alarm Viewer to Play, Pause, Fast Forward/Rewind, Full Screen etc. Footage details are also displayed in the accompanying window and the user has an option to export the video to file.

### Camera control

A camera control facility is available for moveable cameras such as dome-based devices. The following controls are available :

- Iris, Zoom And Focus Controls
- Camera Preset Selection
- Pan + Tilt Control
- Auto – Iris Selection

### Live video feed

The operator can split the video screen into 1x1, 2x2 (4), 3x3 (9) or 4x4 (16) options allowing the operator to view live footage from up to sixteen cameras simultaneously, each in its separate pane.

Each pane can be simply configured using a drag and drop facility to place the appropriate camera into the required pane. The image can also be moved from one pane to the next by dragging and dropping the image to the next pane.

### Image Capture

This option allows the operator to grab an image from the live feed and save it to file. A Refresh button is provided to reload the image with the latest feed. The image can then be saved to file as a standard Bitmap (BMP) file.

### DVMS Compatibility

- American Dynamics - Intellex Ultra Range
- American Dynamics - Intellex Classic Range
- American Dynamics - Intellex LT Range
- American Dynamics - Intellex IP Range

For details on other DVMS brands contact CEM Systems