

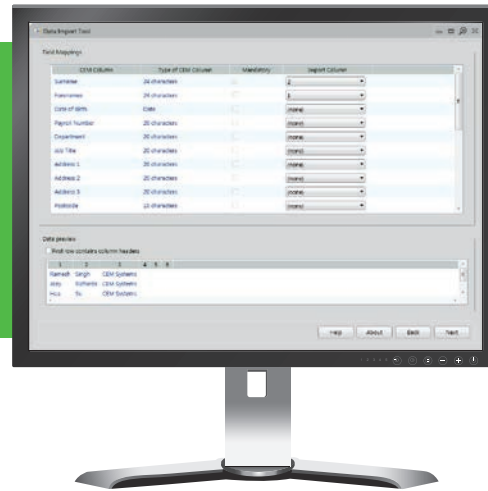
AC2000 Data Import Tool

Features that make a difference:

- The ability to import data from any 3rd party systems through a .CSV file
- Simple, easy to use Graphical User Interface for importing 3rd party data
- Intuitive three step process to import an unlimited number of personnel records
- Summary report shows number of records imported and the number of import failures
- Eradicates the requirement of customised software development the creation of time consuming database scripts

The AC2000 Data Import tool allows system administrators to import 3rd party cardholder details into the AC2000 Personnel application, which stores cardholder information on the access control system.

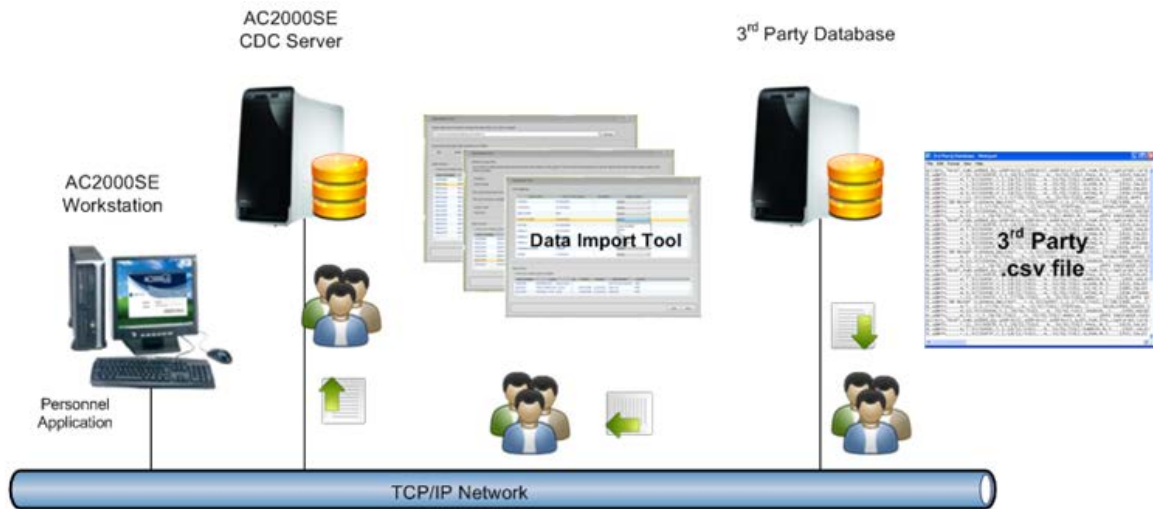
The Data Import Tool will simplify the bulk loading of data from a 3rd party system which is typically required during a new system installation. This removes the need for duplicate data entry and offers users a quick and efficient method of importing data into the AC2000 system. Using the interface tool, an unlimited number of records, including cardholder photographs, can be easily brought into the AC2000 system, eradicating the requirement for customised software development or time consuming database scripts.



How does the data import tool work?

Using a simple three step manual process, users simply choose a CSV file for import and then map fields & associated AC2000 applications where the data will be stored after the import. Using the data import application, fields such as Surname, Date of Birth, Payroll Number, Start Date and Expiry Date to name but a few, can all be seamlessly brought into the AC2000 database.

The intuitive field mapping stage ensures that the data being imported is critically stored in the correct location within the AC2000 central database.



Short Example CEM schema of the personnel table:

personnel_ser serial,
 surname char(24),
 forenames char(24),
 dateofbirth date,
 Hotstamp_num Numeric
 payroll_num char(20),
 job_title char(20),
 address1 char(20),
 address2 char(20),
 address3 char(20),
 gender char(1),
 email_addr char(40),
 tel_num char(20),
 Spare character field 1 char (20),
 Spare character field 2 char (20),

Import Features & Benefits

The AC2000 Data Import Tool allows administrators to import any Comma Separated Variable (CSV) file from a 3rd party system, directly into the central AC2000 database. The easy to use GUI allows administrators to format data to correspond to the existing AC2000 Schema. Using the data import tool users can upload an unlimited number of records, including cardholder photograph, whenever required. This eradicated the need for customised software development to transfer personal records from 3rd party databases.

Requirements

- AC2000 v6.3 software and upwards
- AC2000 Airport v6.6 software and upwards
- AC2000 Lite v6.4 software and upwards

Please Note:

- Only UTF-16 or UTF-32 text files supported
- Biometric templates, & card numbers are currently not supported
- Import of photographic images is only supported in AC2000 SE v6.5 upwards, AC2000 Lite v6.6 upwards and AC2000 AE v6.6 upwards

Related Products



AC2000
 AC2000 Airport
 AC2000 Lite

www.cemsys.com