

AC2000 AED

Alarm & Event Display

OVERVIEW

The AC2000 AED (Alarm and Event Display) is the integrated alarm processing software for AC2000 providing dynamic graphical representation of all system events.

The main function of AED is to transmit real-time graphical, audio and textbased information on all alarms and events that occur on the AC2000 system. Operators can choose how they want to view alarms – graphical maps, text alarms list or both.

AED provides users with a wealth of useful alarms processing features including dynamic icons representing system/device status, automatic zoom and advanced navigational tools.

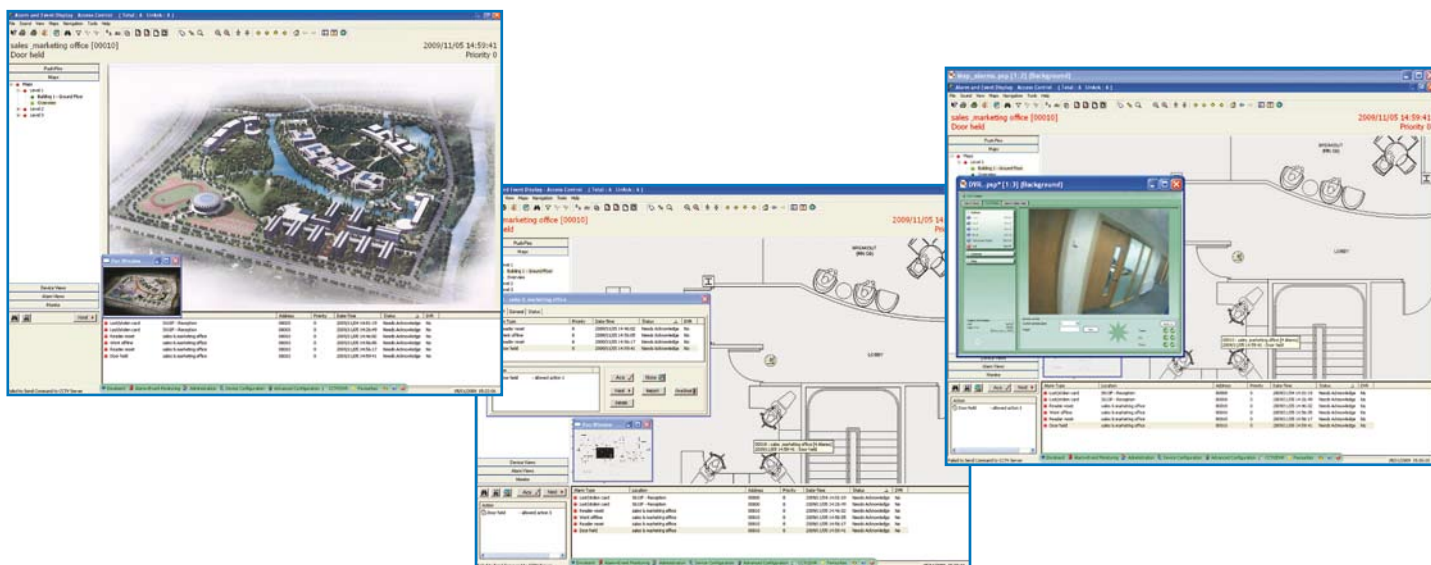
AED offers many useful reporting tools including a real-time alarm and event printout. Operators can also record ongoing comments on the system, which act as a valuable archive of all daily system activity.

AED provides password protected user access to ensure that only operators with the correct privileges may take certain actions. AED provides the interface between AC2000 and CCTV.

FEATURES

- Real-time graphical alarms processing
- User definable alarms and alarm priorities
- Password protected user login
- Advanced graphical maps – any number of maps, floor levels, and zoom levels
- Dynamic, resizable icons representing status of system/devices
- Advanced 'easy to use' navigation tools including Pan Window
- Oneshot facility to open remote door
- Batch Acknowledge/Cancel alarms
- Alarm filtering capability
- Automatic zoom to graphic/floor plan of selected alarm
- 'Text Journals' available for operator reporting on events
- Trace cardholder and movement history facility
- Guard Tour monitoring
- Front-end Interface with Analog CCTV and Digital Video Recorders
- Advanced reporting features

SOFTWARE HIGHLIGHTS



Advanced Navigation Tools

AED provides easy-to-use tools for navigating through the site maps. These include right mouse-click tools and navigational tools on the menu bar. A 'Pan Window' is available allowing users to move around the map by either dragging the view box within the Pan Window, or to directly move around the map by holding the mouse button down and moving the map accordingly.

Trace Facility

AC2000 allows a 'Trace' to be applied to any cardholder so that when they use their card a trace alarm is sent to the AED stations for operator action. An instant, on-screen report shows the operator the cardholders' movements.

Oneshot

AED enables operators to remotely activate any field device on the system by executing a 'Oneshot' command to the device. This will send a one-off open command to any door reader on the system.

Allowed Actions

AED provides a facility to instruct security personnel how to respond to a particular alarm event. AED will record what action was taken and this information is available for reporting.

Batch Mode Delete

This allows a user to clear (i.e. Acknowledge and Cancel) more than one type of alarm in one action. For example, multiple false alarms can be cleared in one easy step.

Product specifications and availability is subject to change without notice. Certain product names mentioned herein may be trade names and/or registered trademarks of their companies.

Push Pins

The Push-Pins feature allows an operator to place configurable symbols anywhere on the AED graphical maps in order to represent any events that may have taken place during a work shift e.g. accidental oil spillage. In this way an ongoing visual display of on-site events can be built up for managerial and administrative uses.

Interface with CCTV

AED provides the front-end interface between AC2000 and a CCTV/DVR network. CCTV camera icons are placed as required on the AED maps. By clicking on the camera icons a live CCTV feed from that location can be displayed and controlled on-screen, or on an external monitor. Right clicking on the camera icons will start Digital Video Recording.

Audio Alerts

Repeated or one-off audio alerts are available and can be customised for standard and user defined alarm types.

Alarm Alerts

AED enables filtering of 'maintenance mode' alarms and features a discreet alarm notification popup when AED is minimised or not in the foreground. The AED 'Details Application' also shows a quick and convenient summary of cardholder details including a photograph upon a card related alarm.