



AC2000 Airport Edition

Access Control and Security Management System

Securing the gateways of the world...

AC2000 Airport Edition (AC2000 AE) is a world renowned security product that encompasses all the core features of the powerful AC2000 SE system with a host of functions and modules that have been designed specifically for airports.

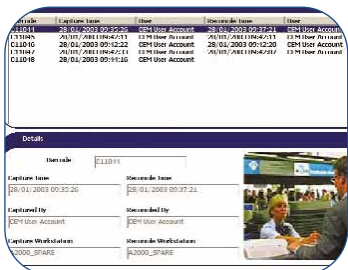
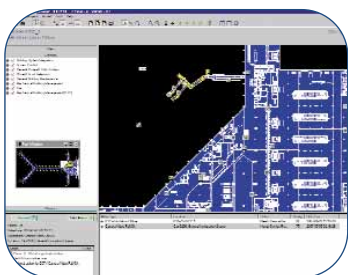
Used by many of the world's leading airports over many years, AC2000 AE has a proven record as one of the most reliable and resilient airport security solutions available. The flexibility offered by AC2000 AE is a key factor in its suitability for the airport environment. The system can be customised to meet the specific needs of each airport with new functionality added as the airports security needs change over time.

CEM can do this by designing and manufacturing both the hardware and system software to ensure that a total integrated solution is provided which is integral to the overall security management of the airport.

A business solution for airports...

AC2000 AE is more than an access control system. Using a suite of extended business applications and by seamlessly integrating with external systems AC2000 AE provides an integrated business solution that is designed to help airports run more efficiently.

Many leading airports are using AC2000 AE to:



- Manage access throughout the airport and prevent unauthorised access to secure areas
- Manage the flow of passengers, visitors and baggage through access points inside the airport
- Manage the ID pass production system with an interface for invoicing
- Provide command and control for airport security, law enforcement and airport management personnel
- Provide one graphical user interface for all electronic systems within the airport
- Enable shared check-in desk usage by airlines
- More efficiently use and control air bridges
- Manage vehicle flow and control vehicle access
- Enhance overall safety



AC2000 AE EXTENDED BUSINESS APPLICATIONS...

- Check-In Desk Enabling
- Passenger Segregation
- Airbridge Monitoring System
- Passenger Reconciliation
- Panic Button Facility
- Taxi Management
- Vehicle Occupancy
- Rolling Transaction Display
- Vehicles Management
- Contractors Module
- Direct Link to Airport Invoicing
- Card Parking Facility

Check-in Desk Enabling

This module provides control of and reporting on shared check-in desks. CEM card readers can be used to enable/disable check-in desks or baggage belts and provide data on equipment usage by means of an operator swiping a valid card. The system can provide a report on check-in desk usage which can be sent to the finance system used to invoice airlines for their use of the check-in desk.

Passenger Segregation

AC2000 AE allows the airport or airline to segregate arriving and departing passengers by using standard CEM card readers. The card readers are interlocked so that if one reader is in Passenger Mode (for multiple throughput) the other can only be put in Staff mode (for individual entry).

Airbridge Monitoring System

The Airbridge Monitoring System available with AC2000 AE is used to provide control over the use of airbridges ensuring that only authorised and trained personnel can use them. CEM card readers installed at each airbridge ensure that operators must use a valid card before it can be used. The system displays the status of each airbridge on a graphical display and provides data for advanced reporting. The system enables airports to reduce maintenance costs associated with airbridges and charge airlines for their use.

Vehicle Occupancy

The Vehicle Occupancy software provides a means to ensure that only authorised passengers within a vehicle, e.g. cars and buses, can pass a control point. AC2000 AE also provides software to monitor and report on vehicle usage within an area such as a car park, identifying when maximum occupancy levels are reached as well as reporting on vehicle usage patterns.

Passenger Reconciliation

This module enables airport operators to ensure that the person issued with a boarding pass is the same person who is actually boarding the plane. Before the passenger goes airside, their image is captured and assigned to a barcode, which is then attached to the boarding card. When the passenger goes to board the flight, the barcode is scanned and the original image is displayed. The operator can then verify that the authorised passenger is using the boarding pass.





CEM Systems Ltd
Unit 4 Ravenhill Business Park
Ravenhill Road
Belfast
BT6 8AW
Northern Ireland

Tel: +44 (0)28 9045 6767
Fax: +44 (0)28 9045 4535
email: cem.sales@tycoint.com
www.cemsys.com