

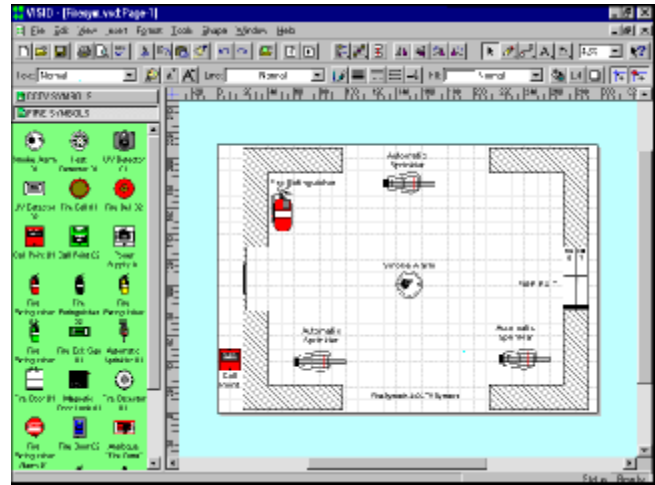
FIRE & SAFETY SYMBOLS™ DATA SHEET

FIRE & SAFETY SYMBOLS is a software package designed to work with any VISIO or SMARTDRAW 'drag and drop' drawing package. It contains symbols of various equipment installed in buildings to reduce the risk of fire, for example; fire extinguishers, fire exit signs, sprinklers and fire doors etc. In addition it also contains the full range of Health and Safety Executive safety signs. These must be displayed in work places as a legal requirement. FIRE & SAFETY SYMBOLS can save you having to buy these signs by printing them yourself.

Each symbol has "Custom Properties" so that specific information can be assigned to each individual shape.

FIRE & SAFETY SYMBOLS is a perfect accompaniment to the other Symbols and Images drawing software.

FIRE & SAFETY SYMBOLS is available in English, French, German, Italian and Spanish.



<u>Hardware / Software</u>	<u>Requirements</u>
PC & Display	486 33Mhz or higher with VGA or SVGA. Pentium recommended.
PC Ram	8 MB or above
PC Hard drive	280 MB or above free
PC Floppy drive	3.5" 1.44MB
PC Pointing device	MS mouse or Compatible pointing device
PC Parallel port and printer	1 parallel port for use with Windows compatible printer.
Drawing package required	VISIO 4 and above, order on part number VISIO4.0, VISIO5.0, VISIO2000 or VISIO2002 SMARTDRAW 5 and above.
PC Graphical environment	VISIO 4.0 - MS Windows 3.1 or above VISIO 5.0, VISIO2000 - Windows 95, 98, NT or XP SMARTDRAW - Windows 95, 98, NT or XP



Product

U.K. OFFICE CCTV SOFTWARE LTD 37 CHAMBRES ROAD SOUTHPORT MERSEYSIDE PR8 6JG U.K. TEL +44 (0)1704 548675 FAX +44 (0)1704 548679	U.S. OFFICE CCTV SOFTWARE INC 10560 MAIN STREET SUITE 415 FAIRFAX VA 22030 U.S.A sales@cctvsoftware.net
E-MAIL sales@cctvsoftware.co.uk INTERNET PAGE www.cctvsoftware.com	
Ref:FIRESYM 052002	

